

# NCI-H929-Luc

## Strain Information

Cat. NO.	NM-GS03-1
Cell Line	NCI-H929-Tg(luc)/Smoc
Strain State	Validation of tumorigenic capacity completed
Model Description	The NCI-H929-Luc cell line is derived from NCI-H929 [H929] cell line with stable and high expression of Luciferase.  *Literature published using this strain should indicate: NCI-H929-Luc cell line (Cat. NO. NM-GS03-1) was purchased from Shanghai Model Organisms Center, Inc..

## Validation Data

### I. In vitro Expression of luciferase on NCI-H929-Luc cell line

Luciferase activity expression on the NCI-H929-Luc cell was measured by microplate reader.

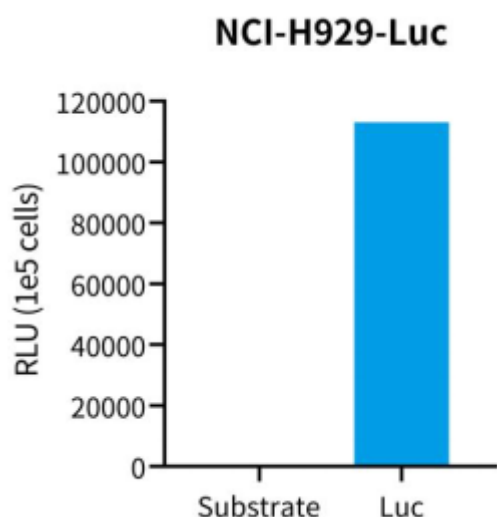


Figure 1. Luciferase activity assay of NCI-H929-Luc cell line

### II. Characterization of in vivo growth kinetics

The NCI-H929-Luc cells were injected into M-NSG mice by tail vein.

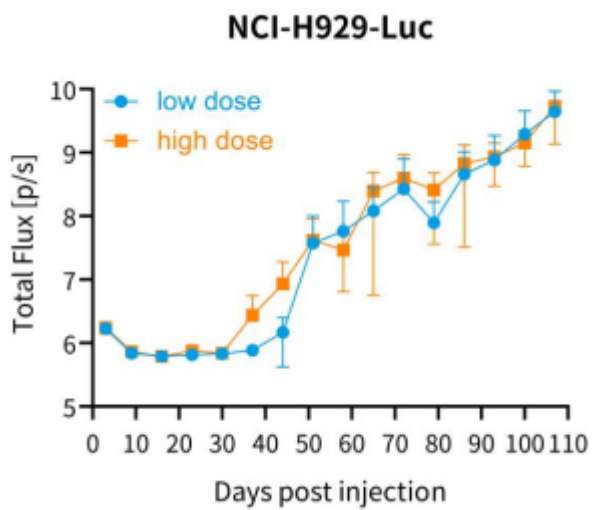


Figure 2. Signal increase curve in NCI-H929-Luc xenograft model (n=5)

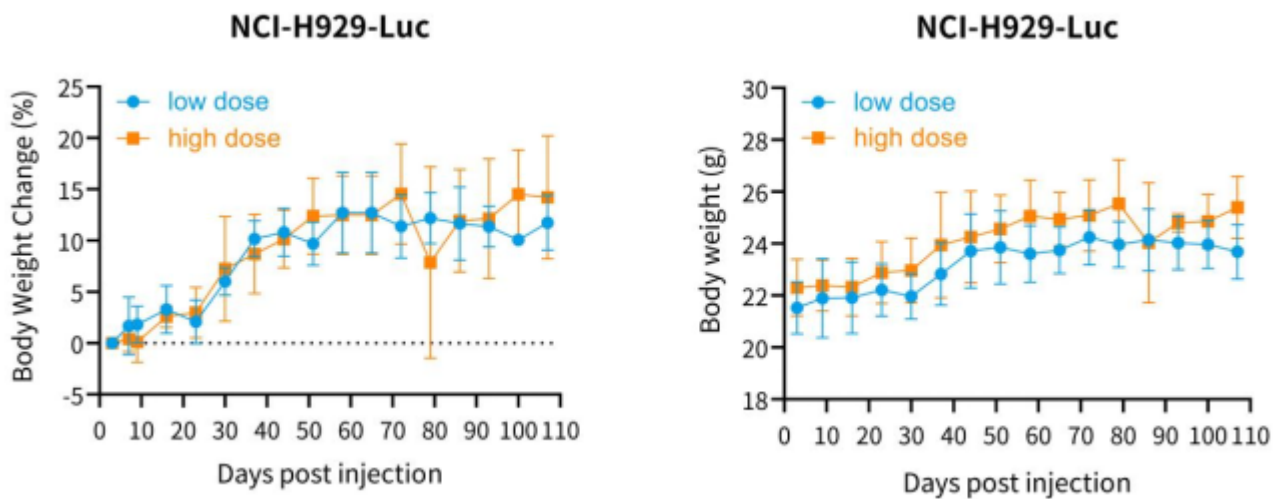


Figure 3. Body weight change of NCI-H929-Luc xenograft model (n=5)

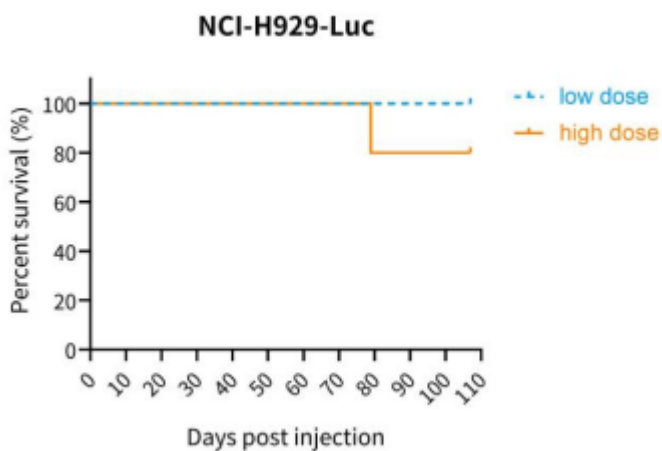


Figure 4. Survival curve of NCI-H929-Luc xenograft model (n=5)

### III. Bioluminescence imaging

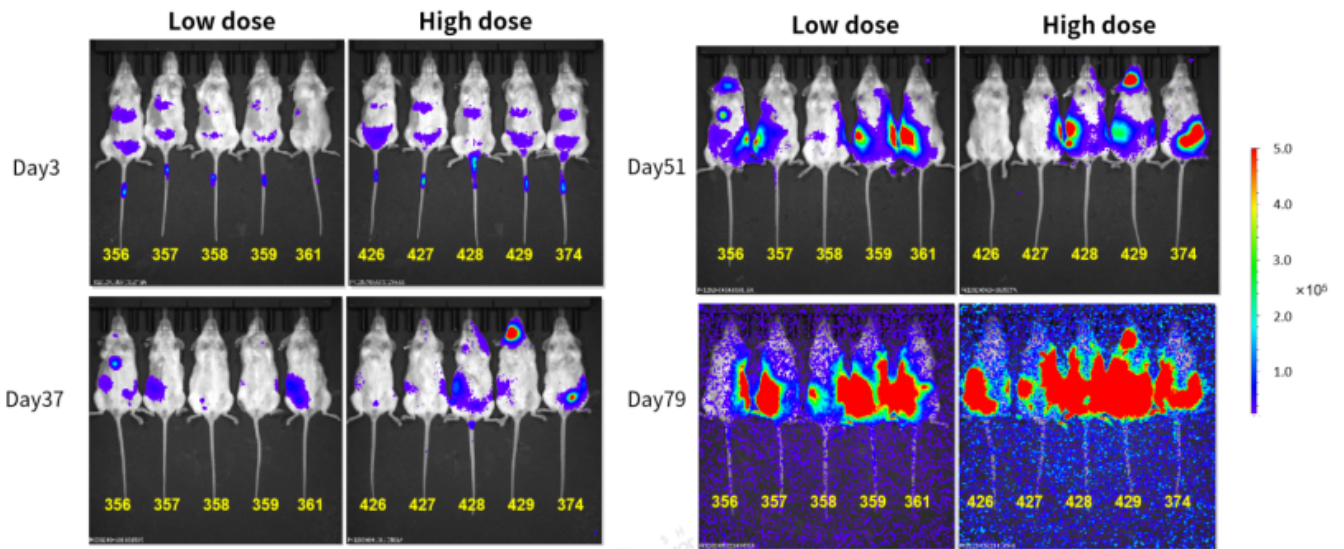


Figure 5. Bioluminescence imaging of NCI-H929-Luc xenograft mouse model