

# MC38-hCLAUDIN 18.2

## Strain Information

Cat. NO.	NM-S13-TM10
Cell Line	MC38-Tg(hCLAUDIN 18.2)/Smoc
Strain State	成瘤性验证中,成瘤性验证完成
Model	These transgenic cells carry humanized CLAUDIN 18.2.
Description	*Literature published using this strain should indicate: MC38-hCLAUDIN 18.2 cell line (Cat. NO. NM-S13-TM10) was purchased from Shanghai Model Organisms Center, Inc..

## Validation Data

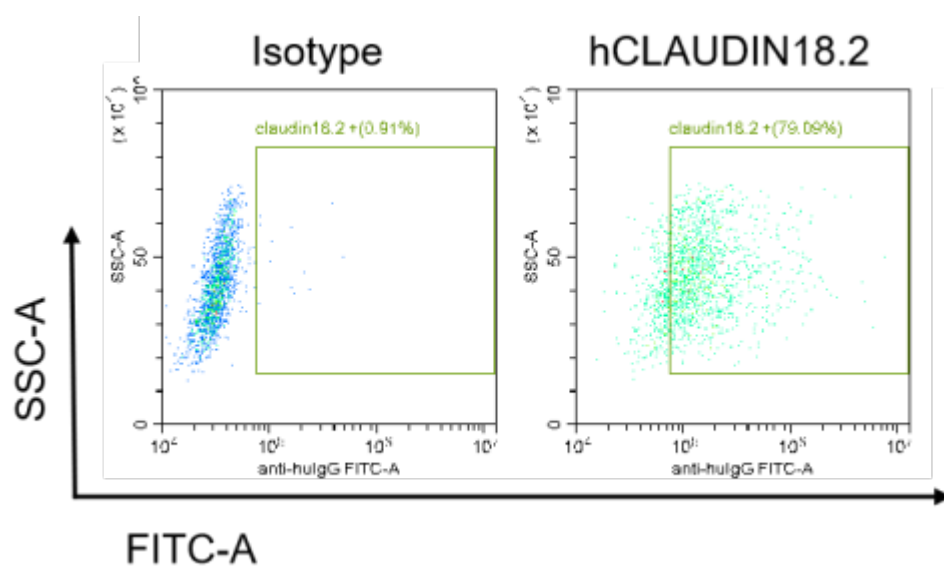


Figure 1. hCLAUDIN18.2 expression in MC38-hCLAUDIN18.2 cell line.

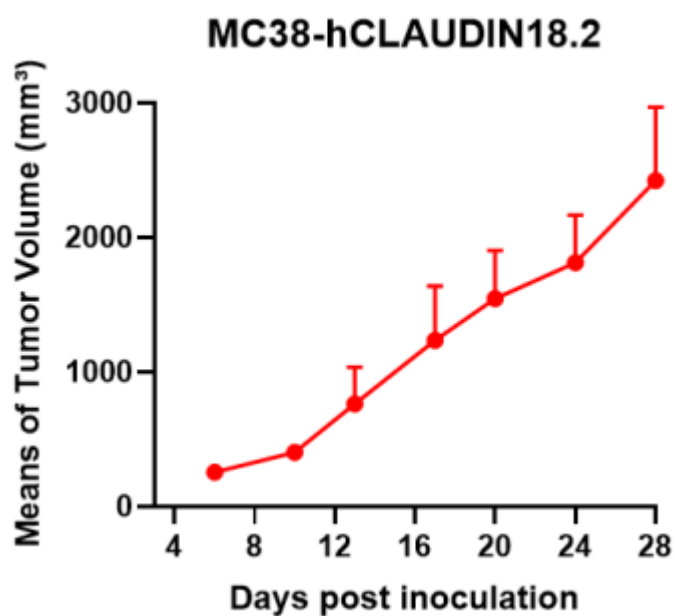


Figure 2. Tumor growth curve of MC38-hCLAUDIN18.2 allogeneic model (n=4).

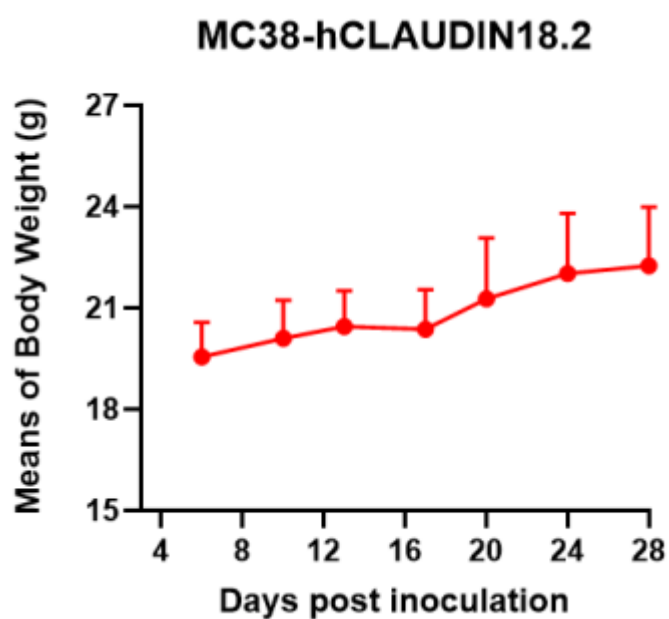


Figure 3. Body weight curve of MC38-hCLAUDIN18.2 allogeneic model (n=4).

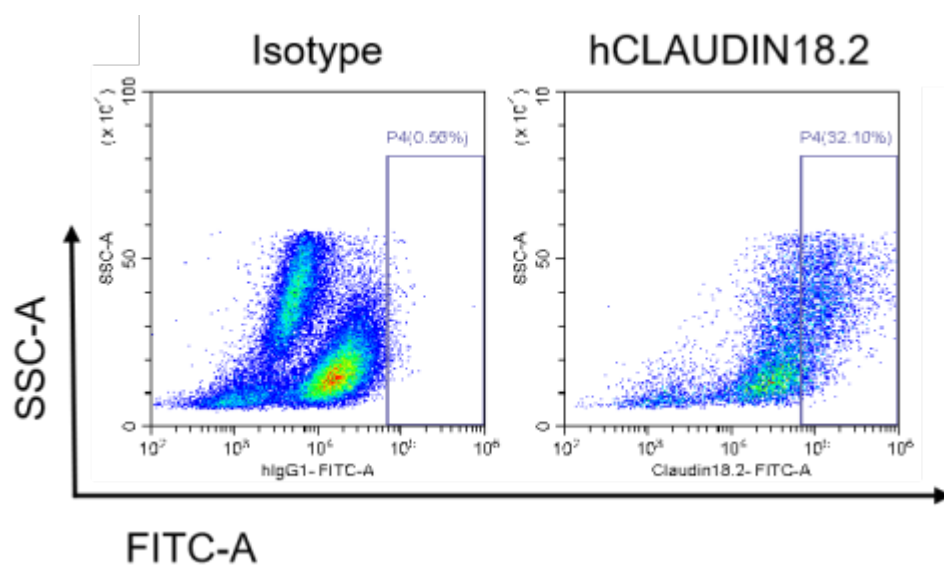


Figure 4. The expression of hCLAUDIN18.2 in humanized modified tumors by FACS.