

# Atp4b-2A-CreERT2

<b>Nomenclature</b>	C57BL/6Smoc- <i>Atp4b</i> <sup>em1(2A-CreERT2-WPRE-pA)Smoc</sup>
<b>Cat. NO.</b>	NM-KI-200240
<b>Strain State</b>	Repository Live

## Gene Summary

Gene Symbol <b>Atp4b</b>	<b>Synonyms</b>	AV080843
	<b>NCBI ID</b>	<a href="#">11945</a>
	<b>MGI ID</b>	<a href="#">88114</a>
	<b>Ensembl ID</b>	<a href="#">ENSMUSG000000031449</a>
	<b>Human Ortholog</b>	ATP4B

## Model Description

A 2A-CreERT2-WPRE-pA expression cassette was knocked into the Atp4b gene stop codon site.

**Research Application:** Cre tool mice

\*Literature published using this strain should indicate: Atp4b-2A-CreERT2 mice (Cat. NO. NM-KI-200240) were purchased from Shanghai Model Organisms Center, Inc..

## Validation Data

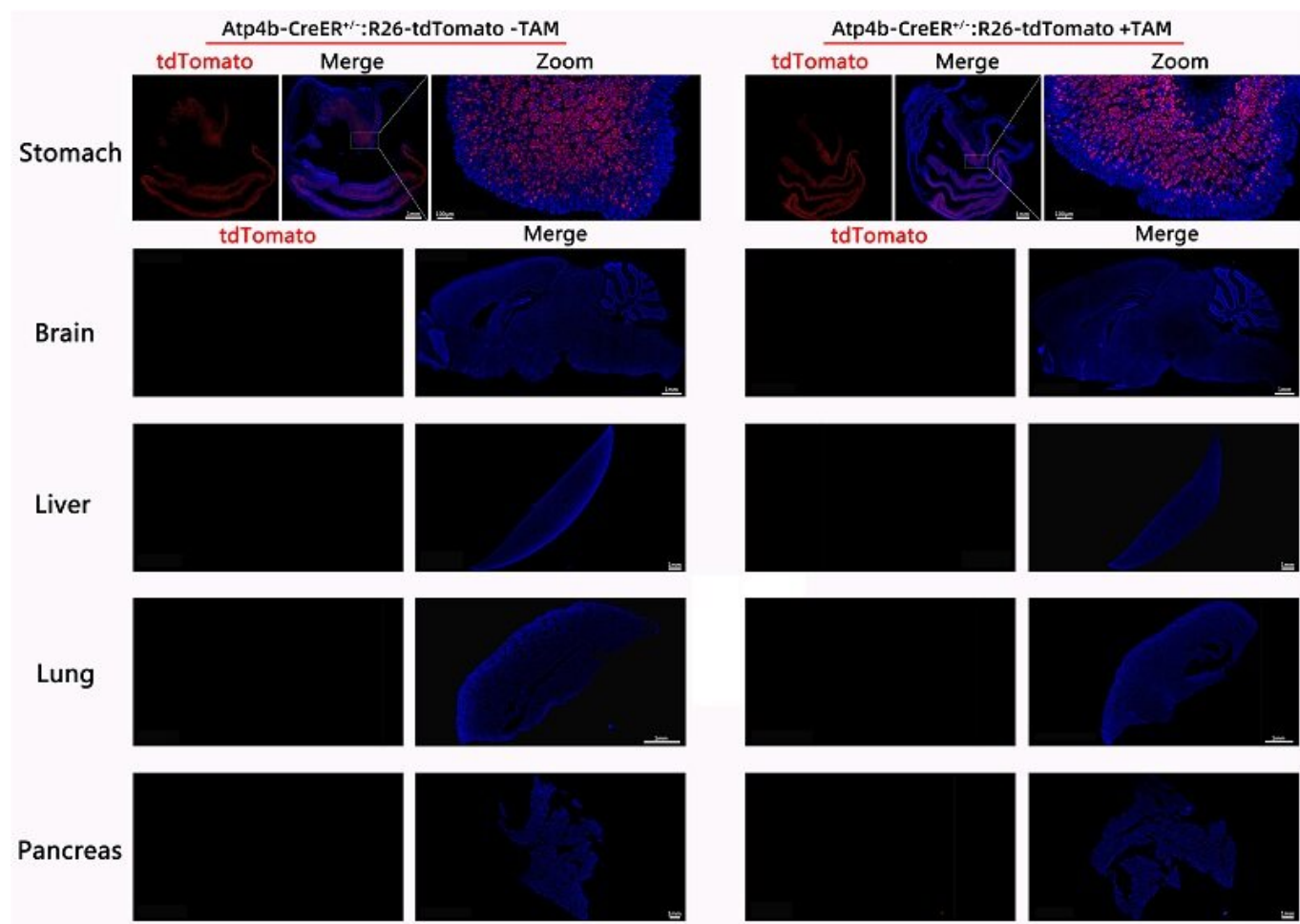


Fig1. Validation of tdTomato expression by fluorescence assay

Cre recombinase expression is highly specific to stomach and, within the stomach, is expressed only in parietal cells and their immediate progenitors. Cre recombinase is not expressed in adult brain, kidney, liver, lung and Pancreas.