

Foxp3-IRES-DTR-2A-tdTomato(BALB/c)

Nomenclature	BALB/cAnSmoc- <i>Foxp3</i> ^{em9(IRES-DTR-2A-tdTomato)Smoc}
Cat. NO.	NM-KI-200213
Strain State	Embryo cryopreservation

Gene Summary

Gene Symbol Foxp3	Synonyms	sf; JM2; scurfin
	NCBI ID	20371
	MGI ID	1891436
	Ensembl ID	ENSMUSG00000039521
	Human Ortholog	FOXP3

Model Description

A IRES-DTR-2A-tdTomato expression cassette was knocked into the Foxp3 gene stop codon site.

Research Application: DTR tool mice

*Literature published using this strain should indicate: Foxp3-IRES-DTR-2A-tdTomato(BALB/c) mice (Cat. NO. NM-KI-200213) were purchased from Shanghai Model Organisms Center, Inc..

Validation Data

CT 26 tumor cells were injected into FOXP3-DTR mice administered with different treatment, and Balb/c mice, respectively. And tumor growth curves of each group were recorded.

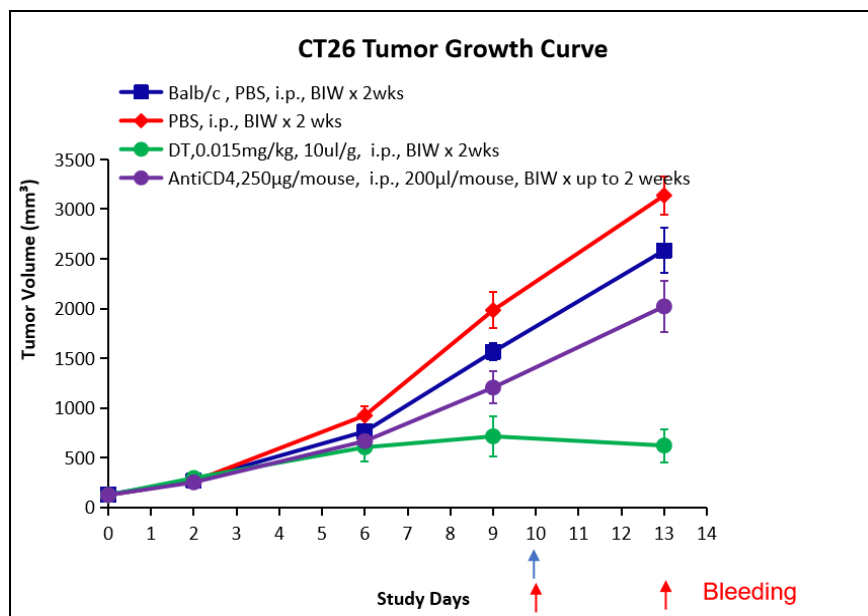


Fig 1. The growth of CT26 tumors in Foxp3-IRES-DTR-2A-tdTomato mice administered with different treatment and Balb/c mice. (In collaboration with CrownBio)

Proportion of different type-specific T cells and macrophages in peripheral blood of each group analyzed using FACS

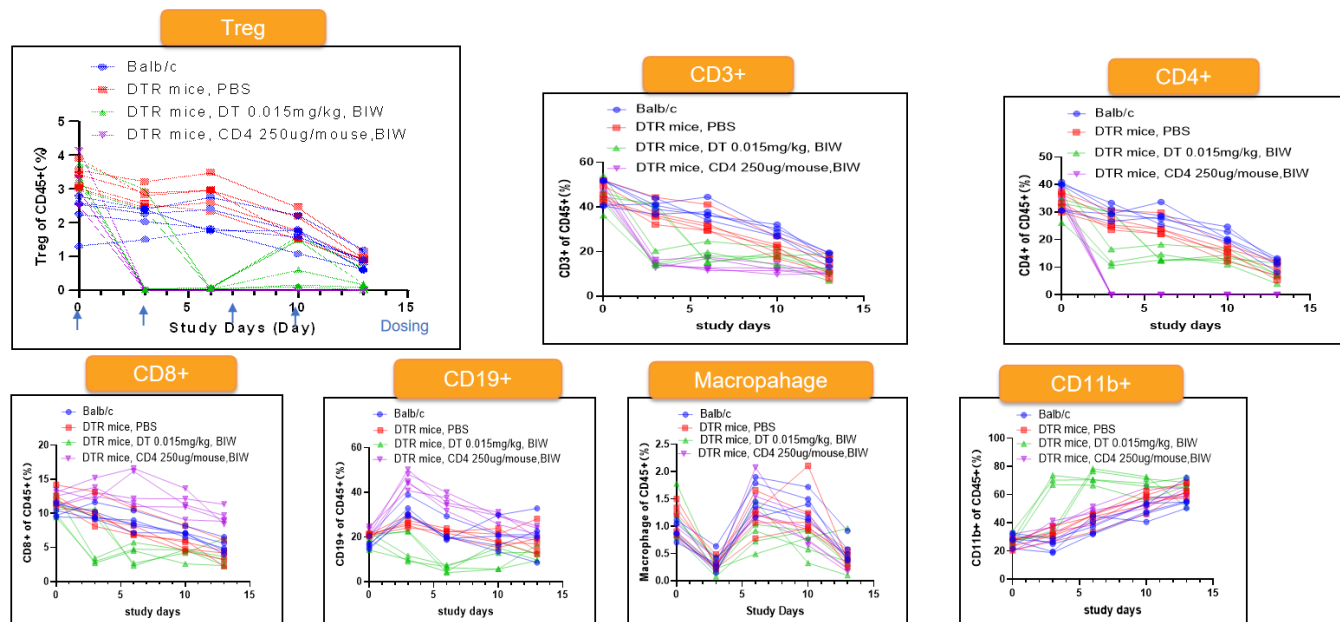


Fig 2. The percentage of different type-specific T cells and macrophages in peripheral blood of CT26 tumor-bearing Foxp3-IRES-DTR-2A-tdTomato mice administered with different treatment and Balb/c mice is detected by FACS. (In collaboration with CrownBio)

Proportion of different type-specific T cells and macrophages in spleen and tumor of each group

analyzed using FACS

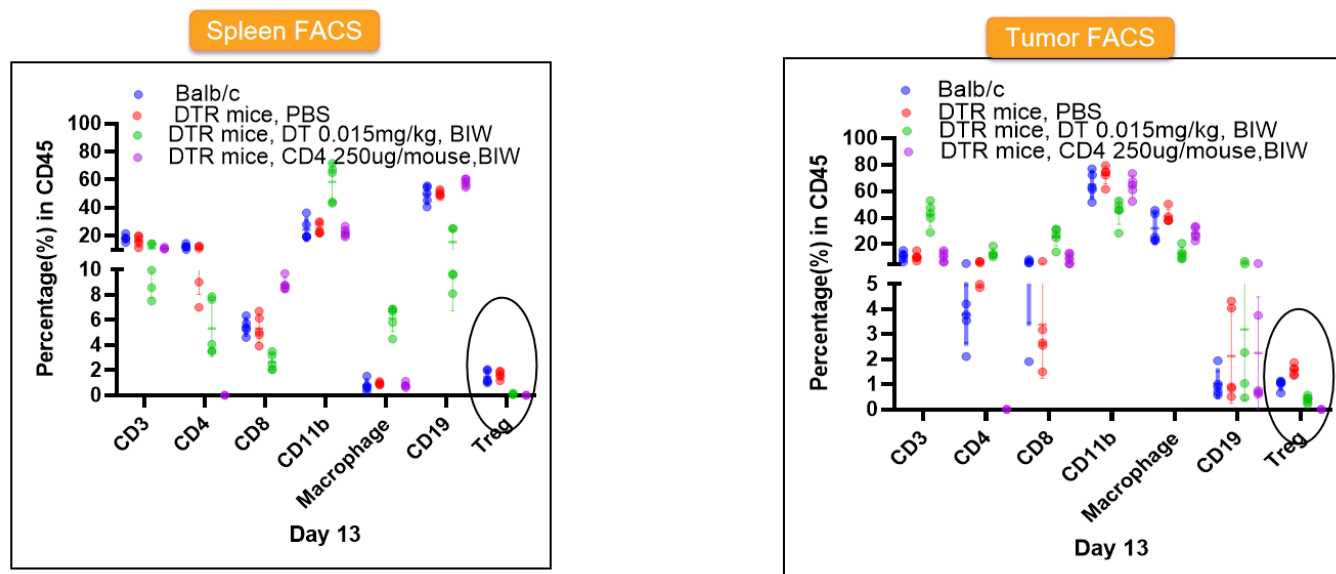


Fig 3. The percentage of different type-specific T cells and macrophages in spleen and tumor of CT26 tumor-bearing Foxp3-IRES-DTR-2A-tdTomato mice administered with different treatment and Balb/c mice is detected by FACS. (In collaboration with CrownBio)

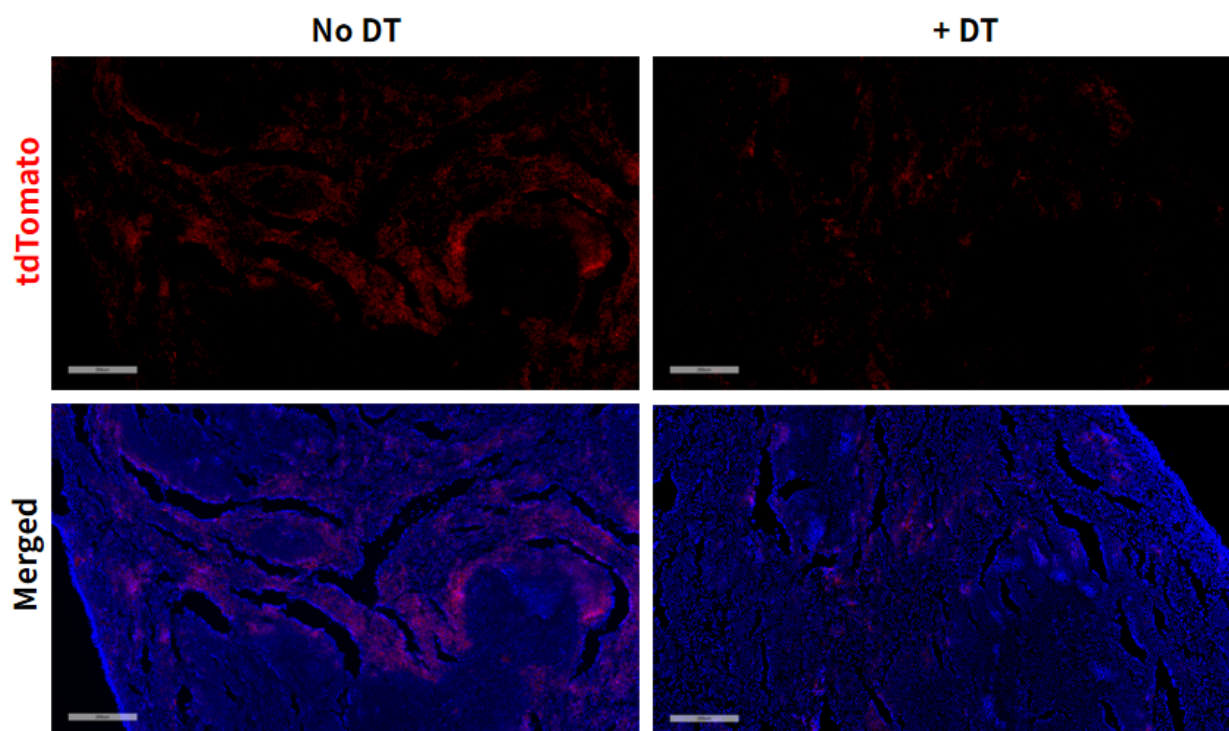


Fig 4. DTR mediated cell knockout in spleen of Foxp3-DTR/tdTomato mice (BALB/c).

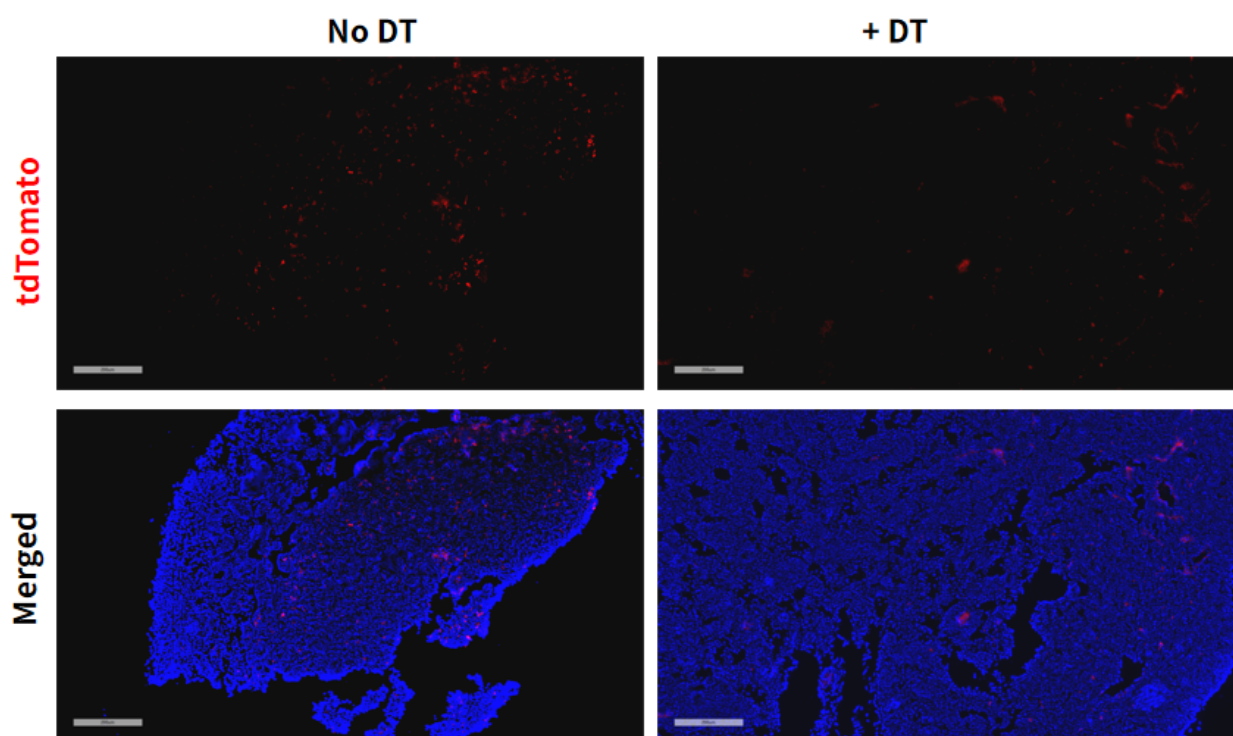


Fig 5. DTR mediated cell knockout in mesenteric lymph nodes of Fcpx3-DTR/tdTomato mice(BALB/c).