

# hHER2

<b>Nomenclature</b>	C57BL/6Smoc- <i>ErbB2</i> <sup>tm1(hERBB2)Smoc</sup>
<b>Cat. NO.</b>	NM-HU-200115
<b>Strain State</b>	Repository Live

## Gene Summary

<b>Gene Symbol</b> ErbB2	<b>Synonyms</b>	Neu; HER2; HER-2; c-neu; ErbB-2; c-erbB2; l11Jus8; mKIAA3023
	<b>NCBI ID</b>	<a href="#">13866</a>
	<b>MGI ID</b>	<a href="#">95410</a>
	<b>Ensembl ID</b>	<a href="#">ENSMUSG00000062312</a>
	<b>Human Ortholog</b>	ERBB2

## Model Description

The endogenous mouse *ErbB2* gene was replaced by human ERBB2 gene.

**Research Application:** Immune-related; tumor research; drug screening

\*Literature published using this strain should indicate: hHER2 mice (Cat. NO. NM-HU-200115) were purchased from Shanghai Model Organisms Center, Inc..

## Validation Data

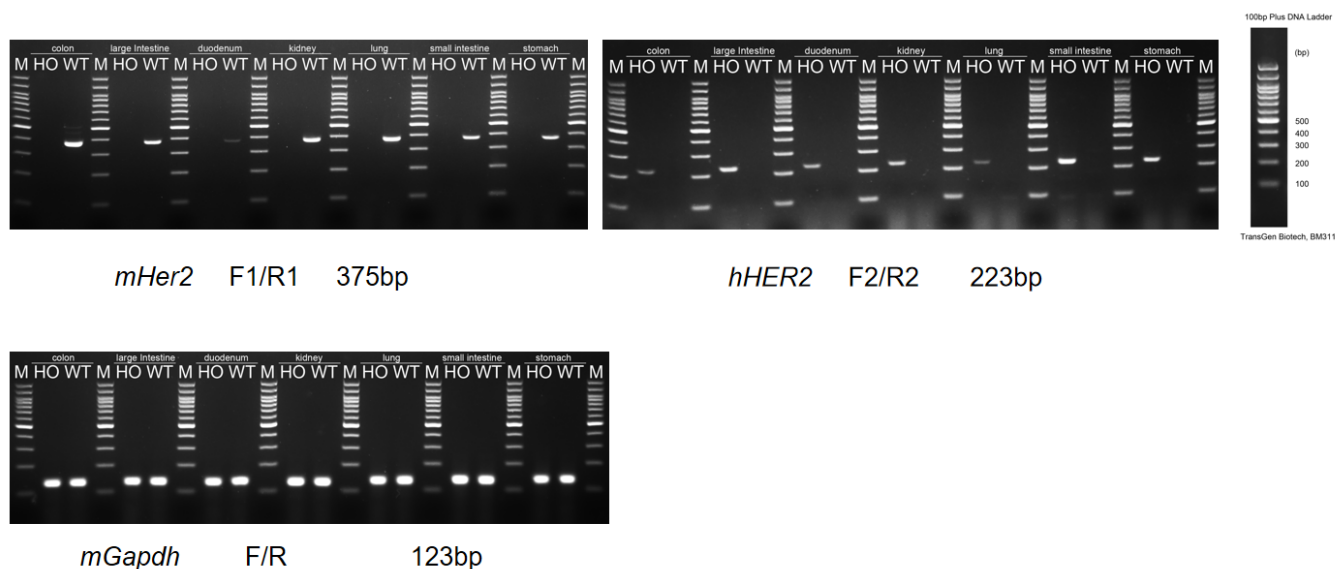


Fig1. Detection of HER2 expression by RT-PCR.

Wild type: only one band at 375 bp with primers F1/R1 (*mHer2*);

Homozygous: one band at 223 bp with primers F2/R2 (*hHER2*).

Abbr. M, DNA marker; HO, homozygous; WT, wild type.

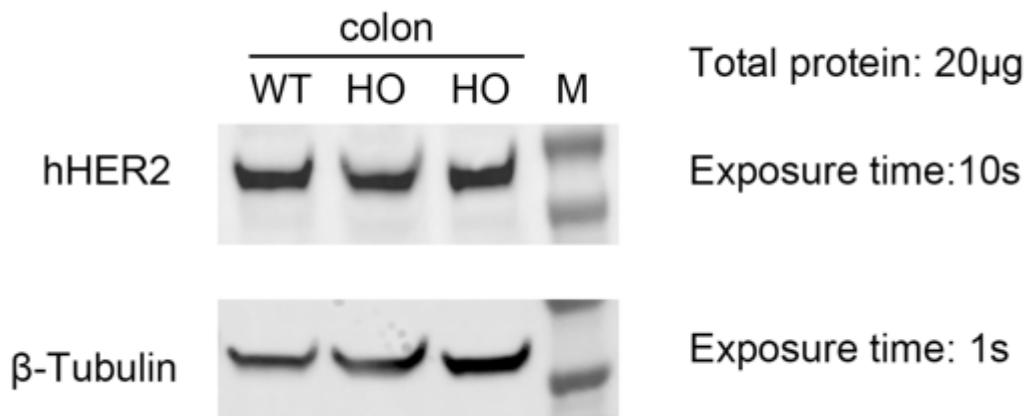


Fig2. Detection of HER2 expression in homozygous *hHER2* mice by Western Blot.

(Note: The HER2 antibody cross-reacted with *mHER2* and humanized HER2)