

# Ace2-2A-CreERT2

<b>Nomenclature</b>	C57BL/6Smoc- <i>Ace2</i> <sup>em2(2A-CreERT2-WPRE-polyA)Smoc</sup>
<b>Cat. NO.</b>	NM-KI-200187
<b>Strain State</b>	Sperm cryopreservation

## Gene Summary

<b>Gene Symbol</b> <b>ACE2</b>	<b>Synonyms</b>	ACEH
	<b>NCBI ID</b>	<a href="#">59272</a>
	<b>MGI ID</b>	Null
	<b>Ensembl ID</b>	<a href="#">ENSG00000130234</a>
	<b>Human Ortholog</b>	ACE2

## Model Description

A 2A-CreERT2-WPRE-polyA expression cassette was knocked into the *Ace2* gene stop codon site. *Ace2* encodes angiotensin I converting enzyme 2. When crossed with a strain carrying a gene flanked by loxP sites, the flanked gene will be removed in cells expressing Cre. This strain is useful for studying lung injury and kidney disease caused by SARS coronavirus infection.

**Research Application:** Cre recombinase tool

\*Literature published using this strain should indicate: Ace2-2A-CreERT2 mice (Cat. NO. NM-KI-200187) were purchased from Shanghai Model Organisms Center, Inc..

## Validation Data

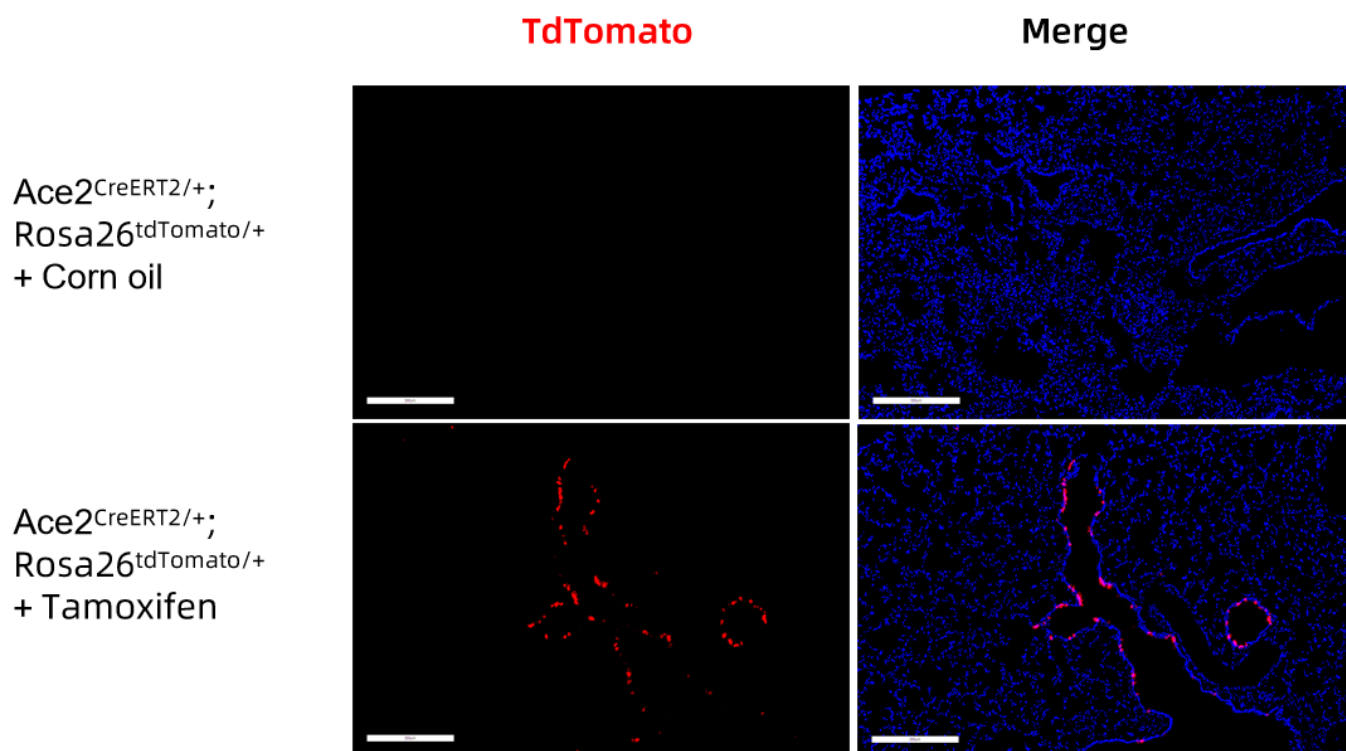


Fig. 1 CreERT2-mediated recombination in the lung of Ace2<sup>CreERT2/+</sup>; Rosa26<sup>tdTomato/+</sup> mouse. TdTomato(red) expression can be detected in the pulmonary bronchial epithelial cells of Ace2<sup>CreERT2/+</sup>; Rosa26<sup>tdTomato/+</sup> mouse after tamoxifen treatment.

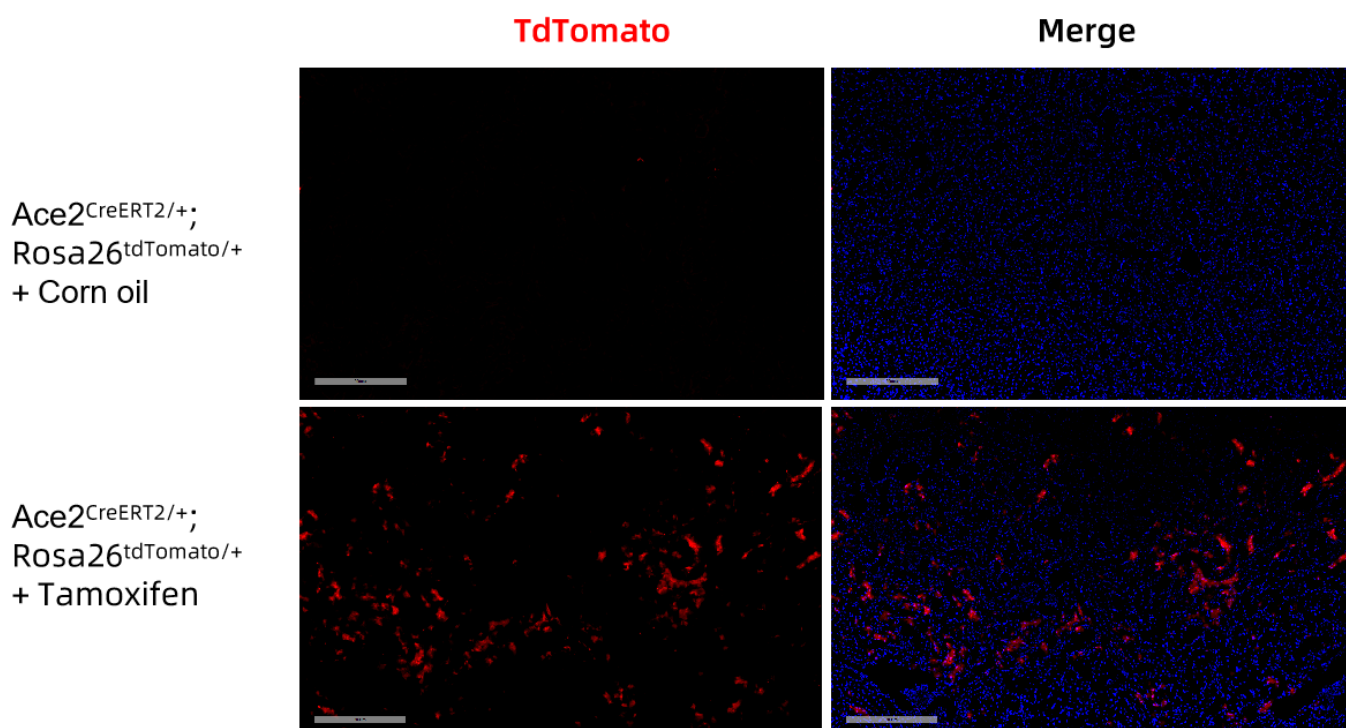


Fig. 2 CreERT2-mediated recombination in the kidney of Ace2<sup>CreERT2/+</sup>; Rosa26<sup>tdTomato/+</sup> mouse. TdTomato(red) expression can be detected in the proximal tubule of Ace2<sup>CreERT2/+</sup>; Rosa26<sup>tdTomato/+</sup> mouse after tamoxifen treatment.

