

IL13-IRES-Cre

Nomenclature	C57BL/6Smoc- <i>Il13</i> ^{em1(IRES-iCre)Smoc}
Cat. NO.	NM-KI-200166
Strain State	Sperm cryopreservation

Gene Summary

Gene Symbol IL13	Synonyms	IL-13; P600
	NCBI ID	16163
	MGI ID	96541
	Ensembl ID	ENSMUSG00000020383
	Human Ortholog	IL13

Model Description

A IRES-iCre expression cassette was knocked into the IL13 gene stop codon site. This gene encodes a multifunctional cytokine. When crossed with a strain carrying a gene flanked by loxP sites, the flanked gene will be removed in cells expressing cre. This cytokine participates in the regulation of immune response, inflammatory response and hematopoietic process.

Research Application: Cre recombinase tool; IL13-expressing cell

*Literature published using this strain should indicate: IL13-IRES-Cre mice (Cat. NO. NM-KI-200166) were purchased from Shanghai Model Organisms Center, Inc..

Validation Data

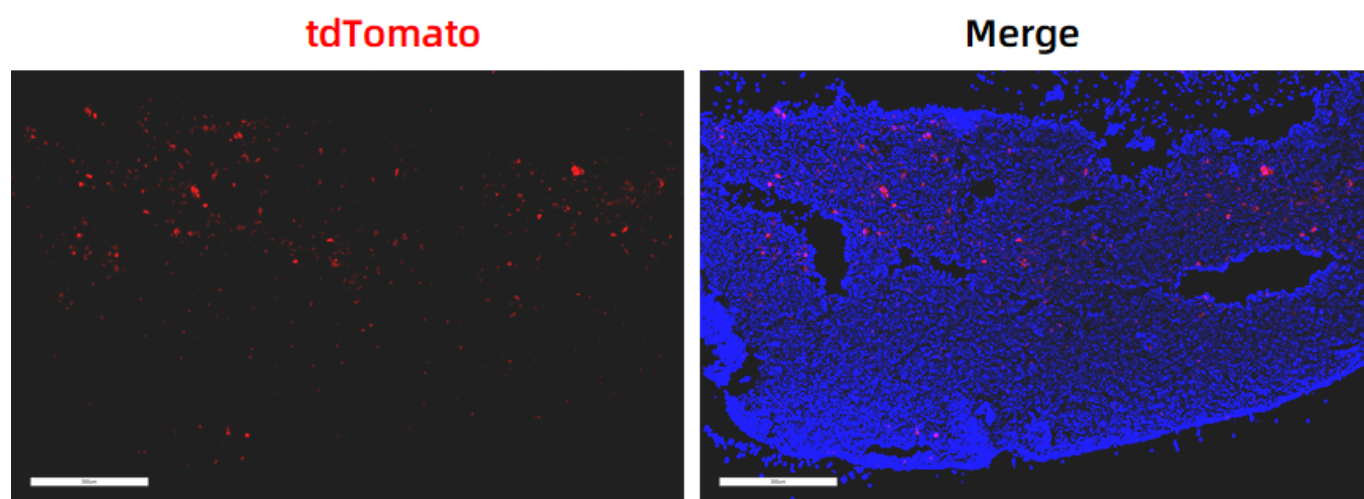


Fig. 1 Cre-mediated recombination in the thymus of $Il13^{Cre/+}$; $Rosa26^{tdTomato/+}$ mouse. TdTomato(red) expression can be detected in individual cells of the thymus derived from $Il13^{Cre/+}$; $Rosa26^{tdTomato/+}$ mouse.

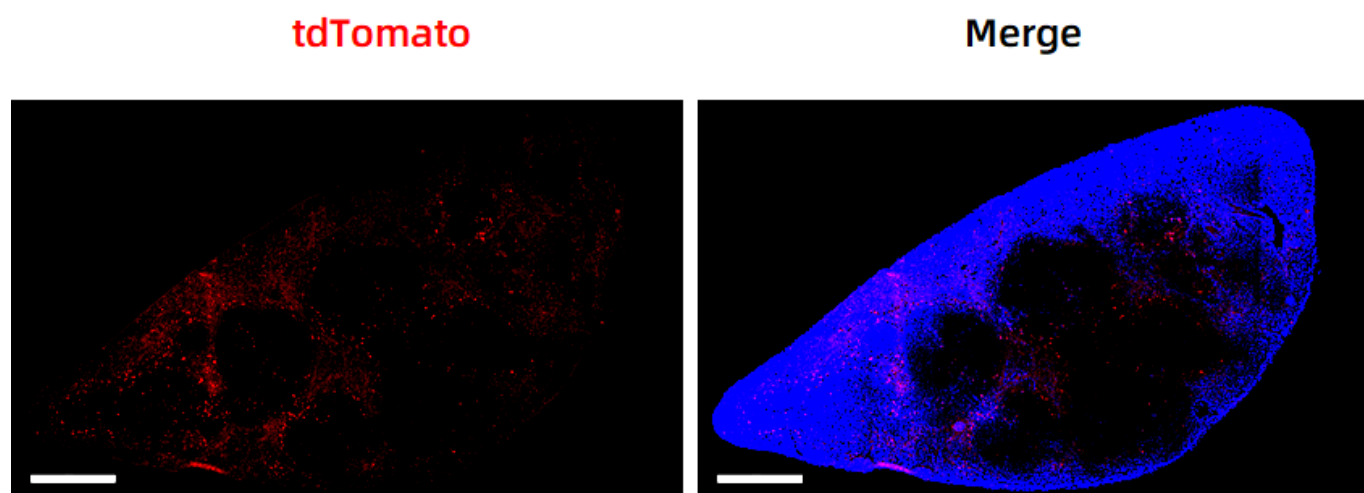


Fig. 2 Cre-mediated recombination in the spleen of $Il13^{Cre/+}$; $Rosa26^{tdTomato/+}$ mouse. TdTomato(red) expression can be detected in the spleen derived from $Il13^{Cre/+}$; $Rosa26^{tdTomato/+}$ mouse.

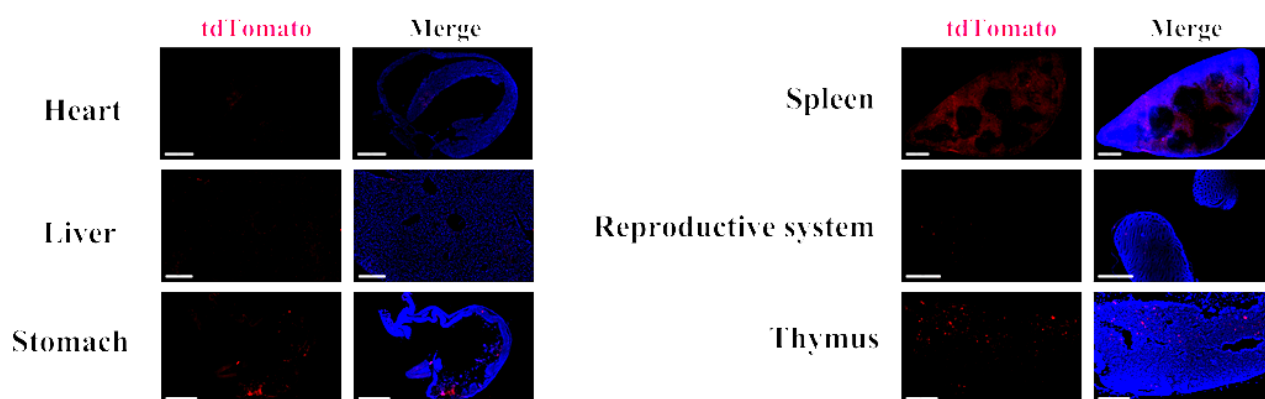


Fig. 3 Detection of tdTomato(red) in various tissues of $Il13^{Cre/+}$; $Rosa26^{tdTomato/+}$ mice. Cre-mediated recombination can be detected in some cells of the thymus and spleen and in individual cells of the stomach and testis. Tdtomato expression can not be observed in the heart. (For more detailed

information please contact our technical advisor.)
