

Il17a-Cre

Nomenclature

Cat. NO.	NM-KI-200137
Strain State	Repository Live

Gene Summary

Gene Symbol IL17A	Synonyms	Il17; Ctla8; IL-17; Ctla-8; IL-17A
	NCBI ID	16171
	MGI ID	107364
	Ensembl ID	ENSMUSG00000025929
	Human Ortholog	IL17A

Model Description

A iCre-polyA expression cassette was knocked into the Il17a gene start codon site. This gene encodes a pro-inflammatory cytokine that is a member of the interleukin-17 family. When crossed with a strain carrying a gene flanked by loxP sites, the flanked gene will be removed in cells expressing cre. This strain may be useful for studying autoimmune inflammatory diseases such as rheumatoid arthritis, psoriasis and multiple sclerosis.

Research Application: Cre recombinase tool; T helper cell

*Literature published using this strain should indicate: Il17a-Cre mice (Cat. NO. NM-KI-200137) were purchased from Shanghai Model Organisms Center, Inc..

Validation Data

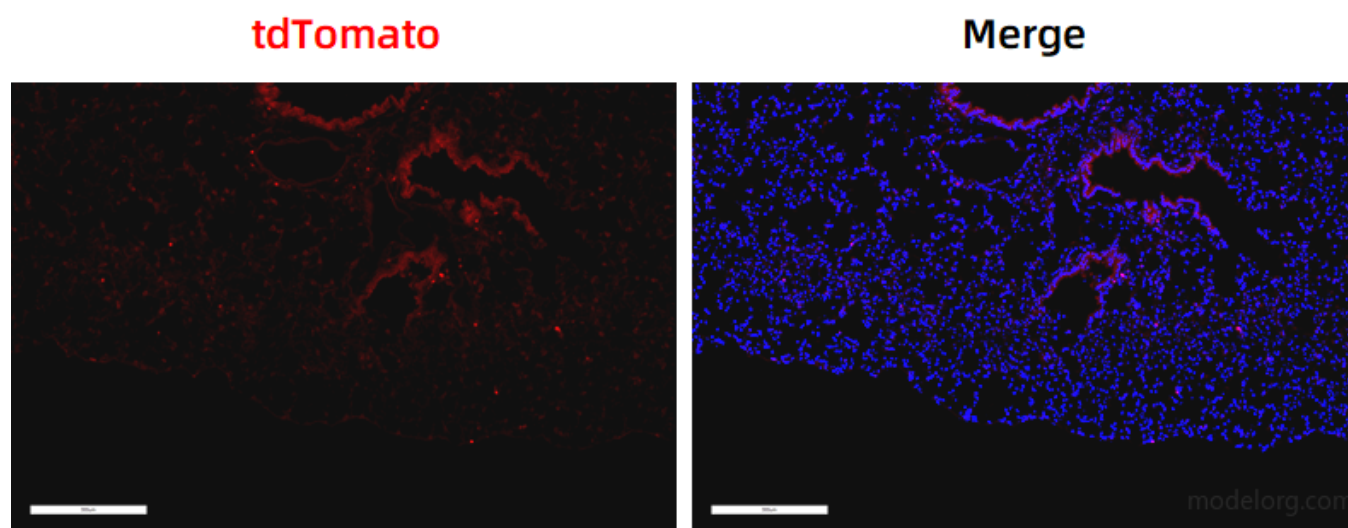


Fig. 1 Cre-mediated recombination in the lung of IL17a^{Cre/+}; Rosa26^{tdTomato/+} mouse. TdTomato(red) expression can be detected in pulmonary immune cells of IL17a^{Cre/+}; Rosa26^{tdTomato/+} mouse.

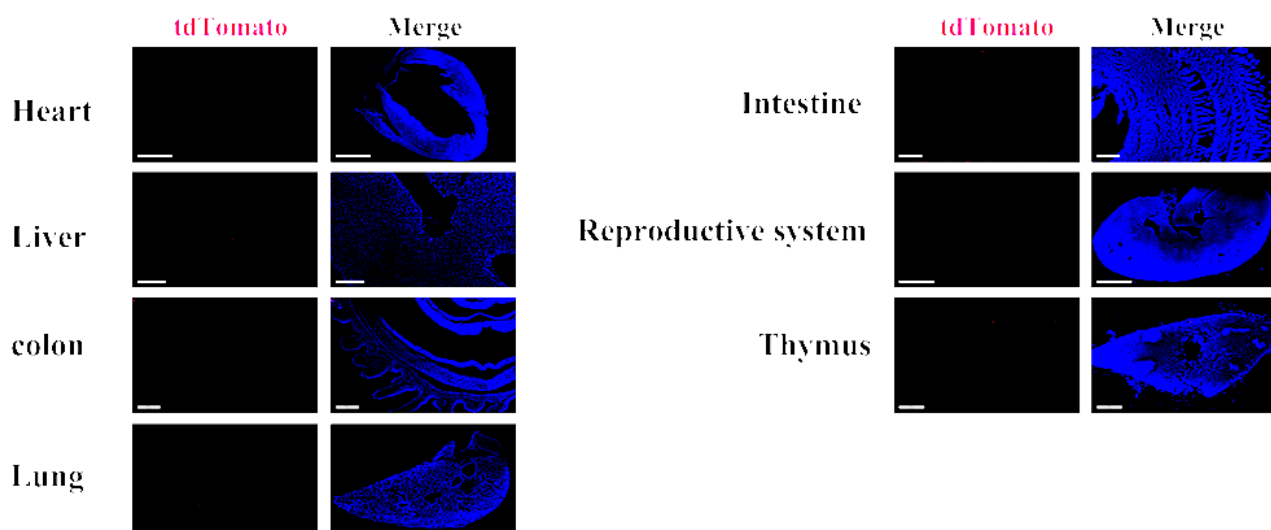


Fig. 2 Detection of tdTomato(red) in various tissues of IL17a^{Cre/+}; Rosa26^{tdTomato/+} mice. Cre-mediated recombination can be detected in the lymph nodes of the intestine and colon. Tdtomato expression can also be observed in some cells of the thymus and in individual cells of lung, kidney and liver. (For more detailed information please contact our technical advisor.)