

Prox1-IRES-CreERT2

Nomenclature	C57BL/6Smoc- <i>Prox1</i> ^{em1(IRES-CreERT2-pA)Smoc}
Cat. NO.	NM-KI-200119
Strain State	Repository Live

Gene Summary

Gene Symbol Prox1	Synonyms	A230003G05Rik
	NCBI ID	19130
	MGI ID	97772
	Ensembl ID	ENSMUSG00000010175
	Human Ortholog	PROX1

Model Description

A IRES-CreERT2-pA expression cassette was knocked into the Prox1 gene stop codon site. Prox1 encodes a transcription factor (prospero-related homeobox 1) that is necessary for the formation and maintenance of lymphatic vessels. When Prox1-IRES-CreERT2 mice are bred with mice containing loxP-flanked sequence, tamoxifen-inducible Cre-mediated recombination will result in deletion of the floxed sequences in PROX1 positive cells.

Research Application: Cre recombinase tool; Neuroscience

*Literature published using this strain should indicate: Prox1-IRES-CreERT2 mice (Cat. NO. NM-KI-200119) were purchased from Shanghai Model Organisms Center, Inc..

Validation Data

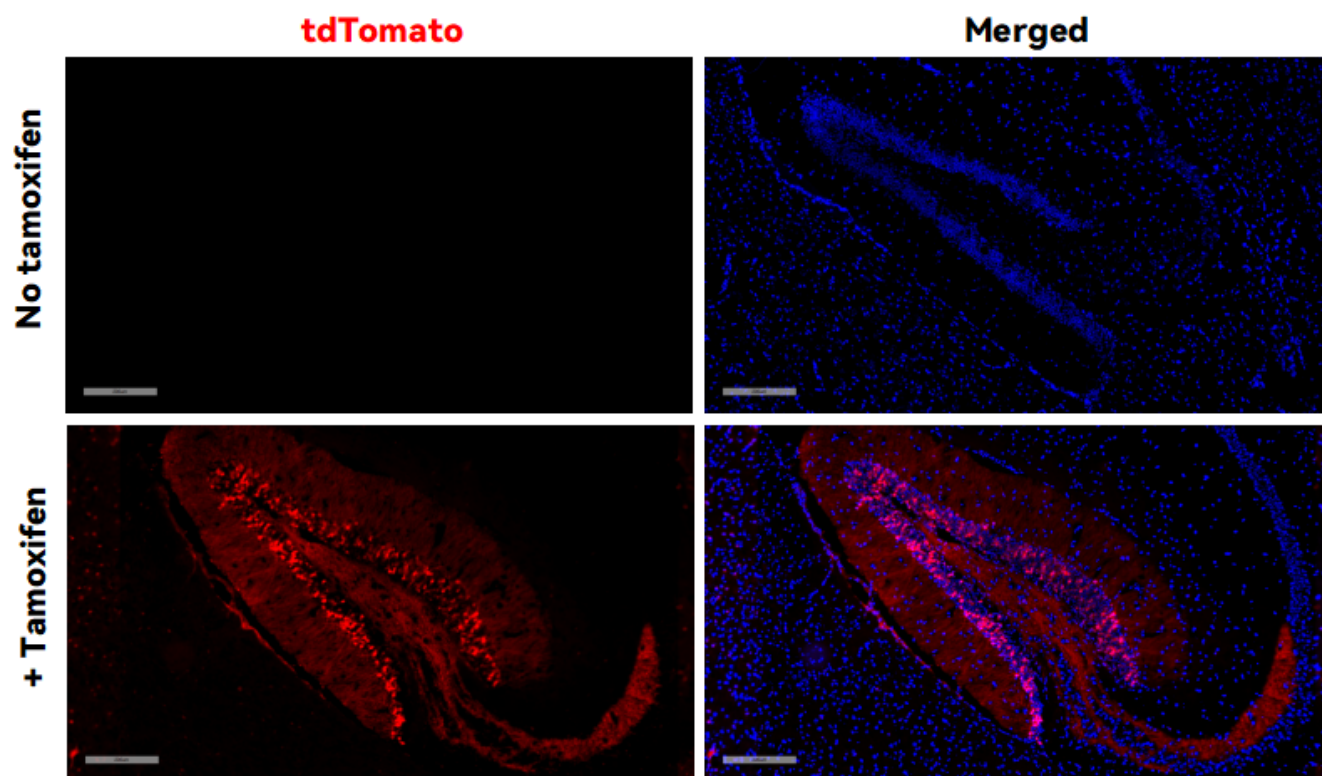


Fig1. CreERT2-mediated recombination in Dentate Gyrus of $Prox1^{CreERT2/+}; Rosa26^{tdTomato/+}$ mouse.

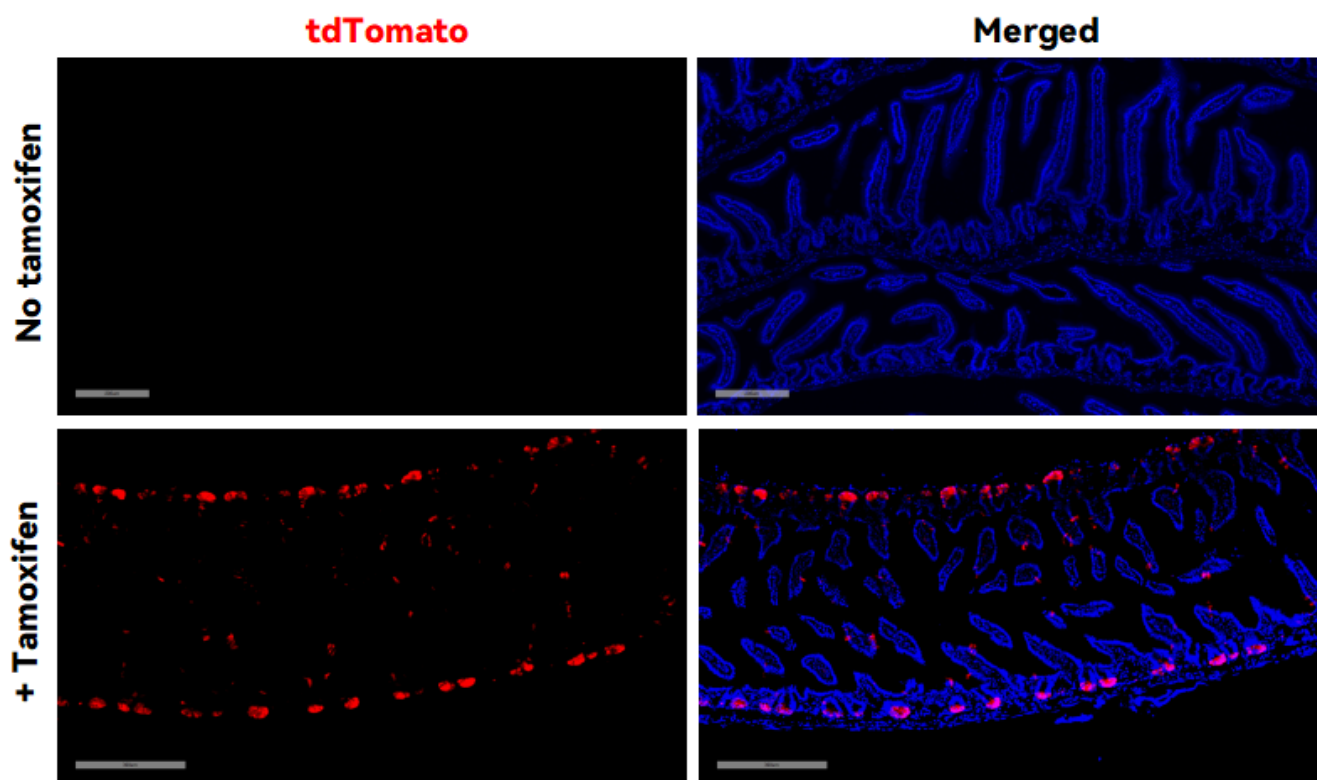


Fig2. CreERT2-mediated recombination in Small intestine of $Prox1^{CreERT2/+}; Rosa26^{tdTomato/+}$ mouse.

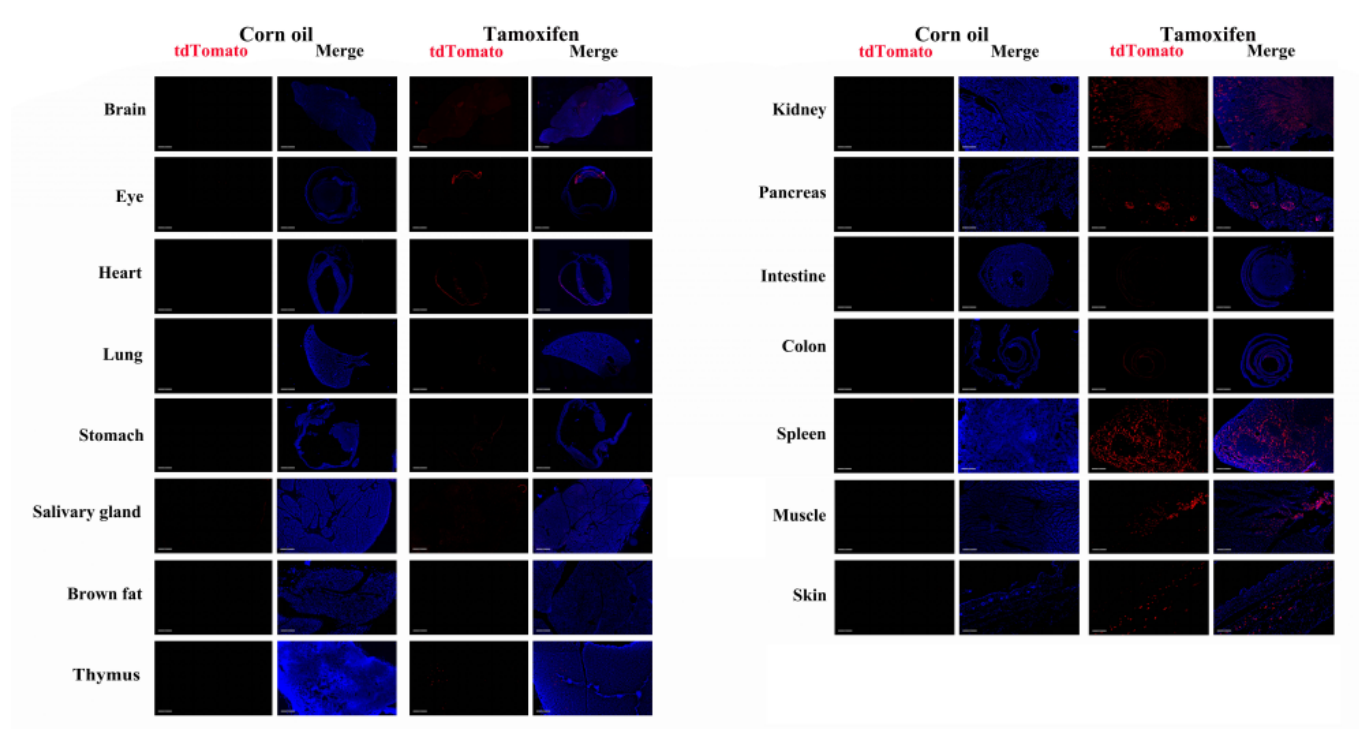


Fig3. Detection of tdTomato(red) in various tissues of Prox1CreERT2/+;Rosa26tdTomato/+ mice. Labeling was also observed in pituitary gland, retina, heart, thymus, stomach, lung, submandibular gland, muscle, ovary, spleen, pancreas and kidney. (For more information please contact: 400-728-0660.)