

Axin2-CreERT2

Nomenclature	C57BL/6Smoc- <i>Axin2</i> ^{em1(CreERT2-pA)Smoc}
Cat. NO.	NM-KI-200109
Strain State	Embryo cryopreservation

Gene Summary

Gene Symbol Axin2	Synonyms	Axi1; Axil; Conductin
	NCBI ID	12006
	MGI ID	1270862
	Ensembl ID	ENSMUSG00000000142
	Human Ortholog	AXIN2

Model Description

A CreERT2-pA expression cassette was knocked into the Axin2 gene start codon site. As Axin2 is an intracellular protein, it is essential for identifying a surface marker for stem cell purification. When these Axin2-CreERT2 mice are bred with mice containing a loxP-flanked sequence of interest, tamoxifen-inducible, Cre-mediated recombination will result in deletion of the flanked sequences in Axin2 expressing cells.

Research Application: Cre recombinase tool; Signaling pathway; Stem cells

*Literature published using this strain should indicate: Axin2-CreERT2 mice (Cat. NO. NM-KI-200109) were purchased from Shanghai Model Organisms Center, Inc..

Validation Data

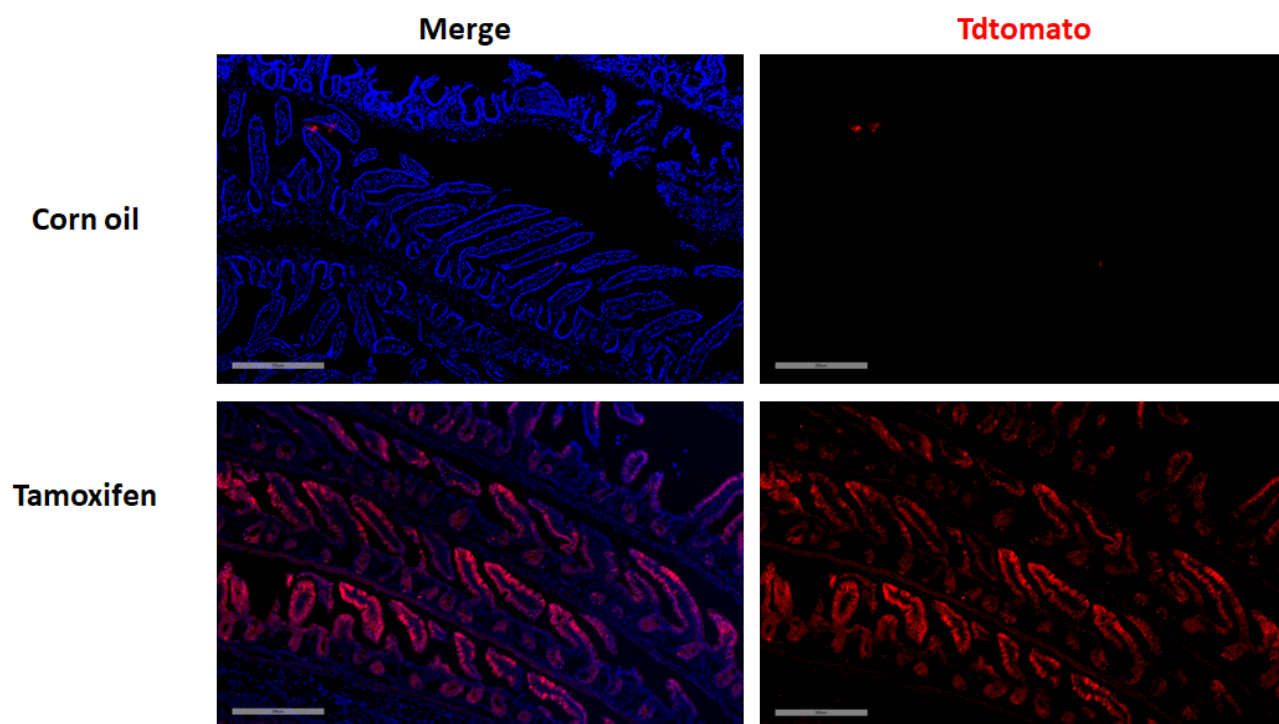


Fig. 1 CreERT2-mediated recombination in the villi and crypts of small Intestine of Prom1-CreERT2; Rosa26-tdTomato mice after tamoxifen treatment.

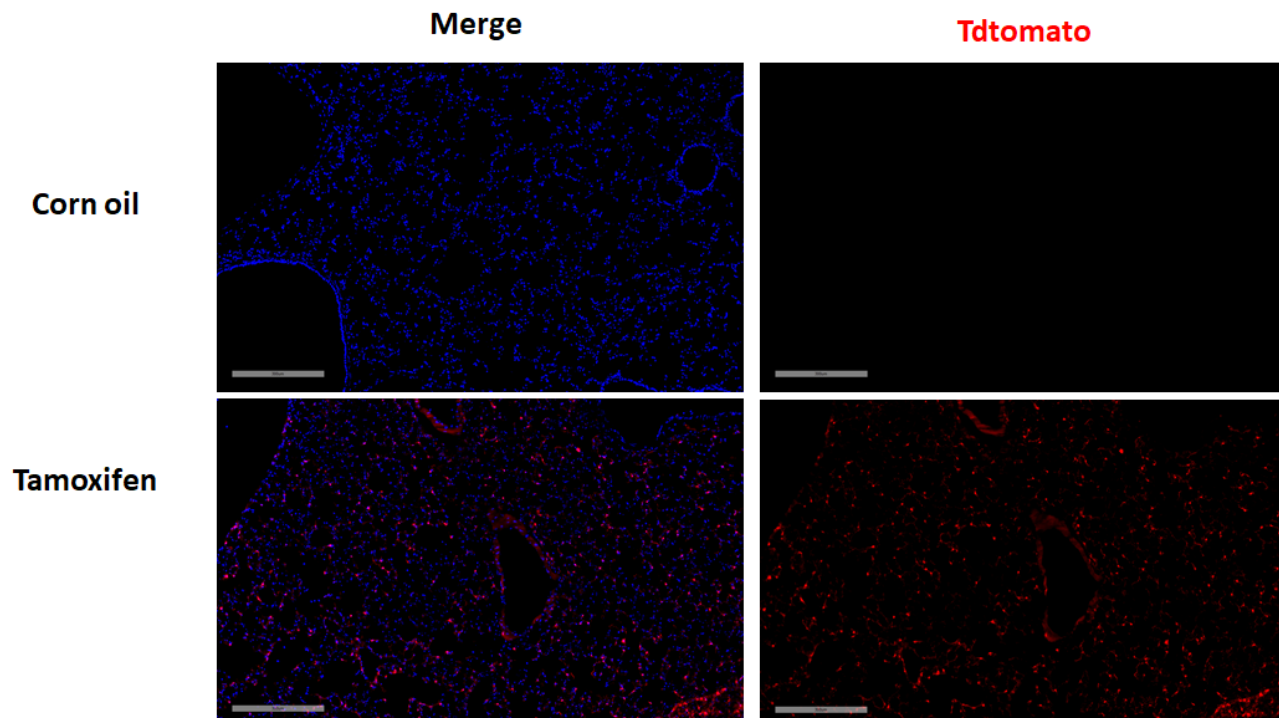


Fig. 2 CreERT2-mediated recombination in the alveoli of Axin2-CreERT2; Rosa26-tdTomato mice after tamoxifen treatment.

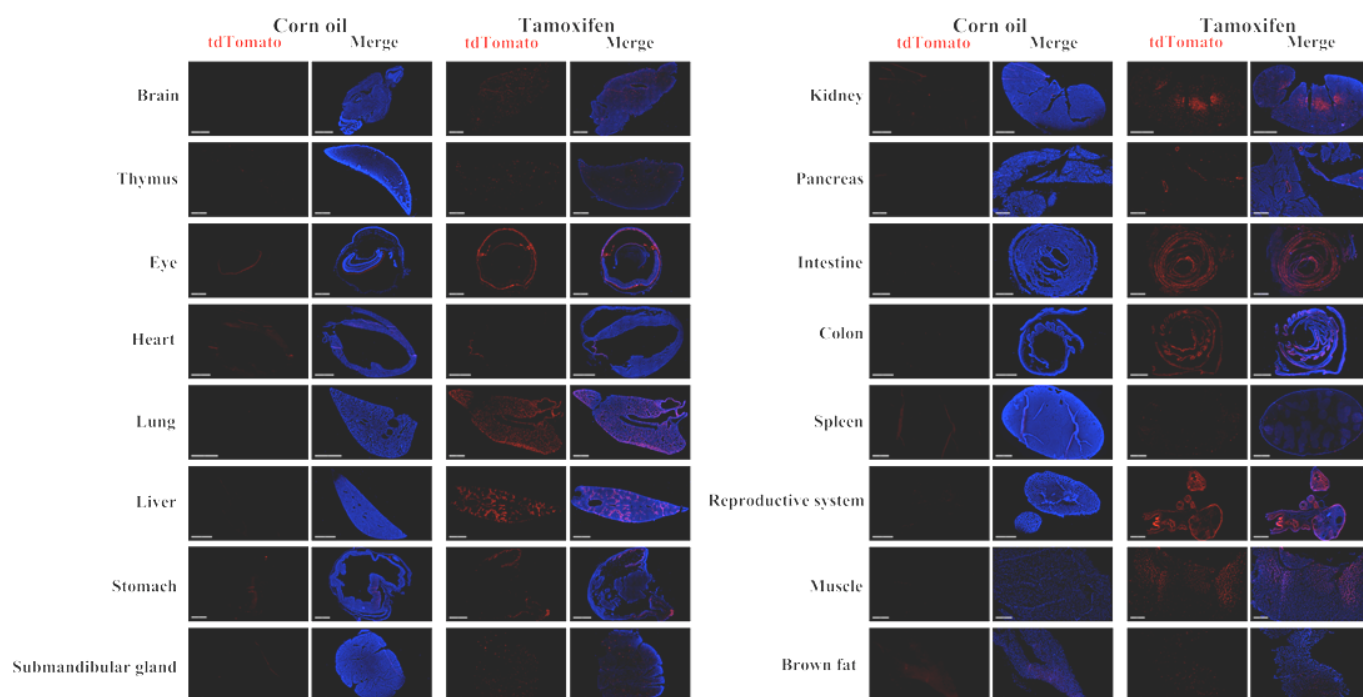


Fig.3 Tdtomato was also abundantly expressed in brain, large intestine, small intestine, kidney, liver, lung, ovary (leaky expression), and uterus (leaky expression); expressed in brown fat, eye, heart valve, muscle, pancreas, stomach and thymus (leaky expression). There was a small amount of expression in salivary glands and spleen. (For more information please contact: 400-728-0660.)