

Gad2-IRES-Cre

Nomenclature	C57BL/6Smoc- <i>Gad2</i> ^{em1(IRES-iCre-pA)Smoc}
Cat. NO.	NM-KI-200078
Strain State	Repository Live

Gene Summary

Gene Symbol Gad2	Synonyms	GAD65; Gad-2; GAD(65); 6330404F12Rik
	NCBI ID	14417
	MGI ID	95634
	Ensembl ID	ENSMUSG00000026787
	Human Ortholog	GAD2

Model Description

A IRES-iCre-pA expression cassette was knocked into the Gad2 gene stop codon site.

Research Application: By mating the reporter mice with Cre-expressing mice, Gad2 positive cells derived from double-positive mice were permanently labeled by fluorescent protein. It can be used to trace Gad2-positive cells.

*Literature published using this strain should indicate: Gad2-IRES-Cre mice (Cat. NO. NM-KI-200078) were purchased from Shanghai Model Organisms Center, Inc..

Validation Data

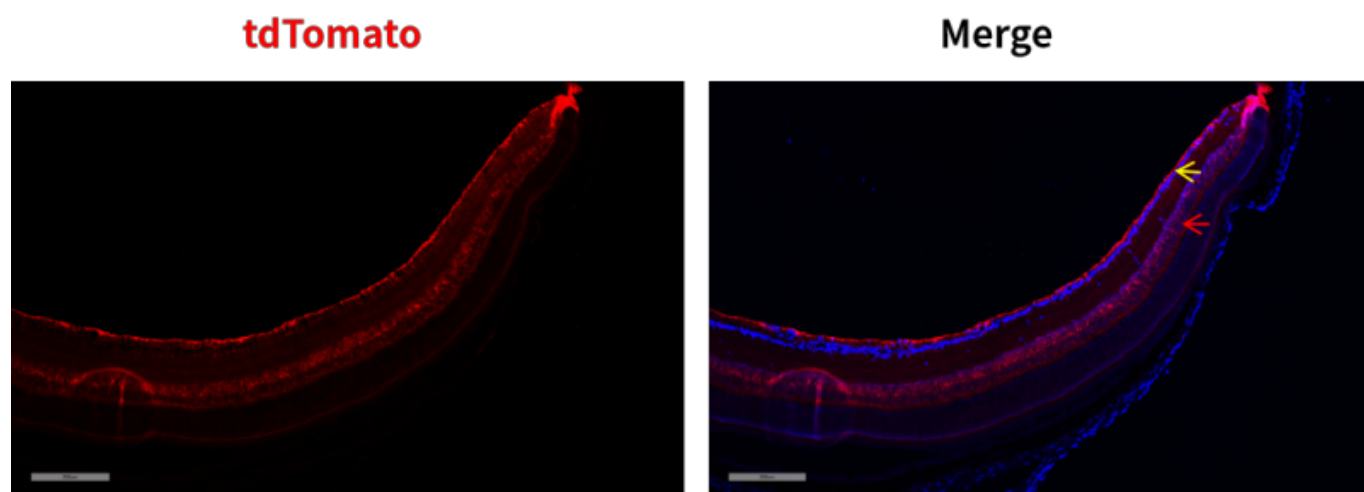


Fig. 1 Detection of tdTomato (red) in the retina of $Gad2^{iCre/+}; Rosa26^{tdTomato/+}$ mice. Cre-mediated recombination in the retinal ganglion cell layer (yellow arrow) and inner nuclear layer (red arrow) of $Gad2^{iCre/+}; Rosa26^{tdTomato/+}$ mouse.

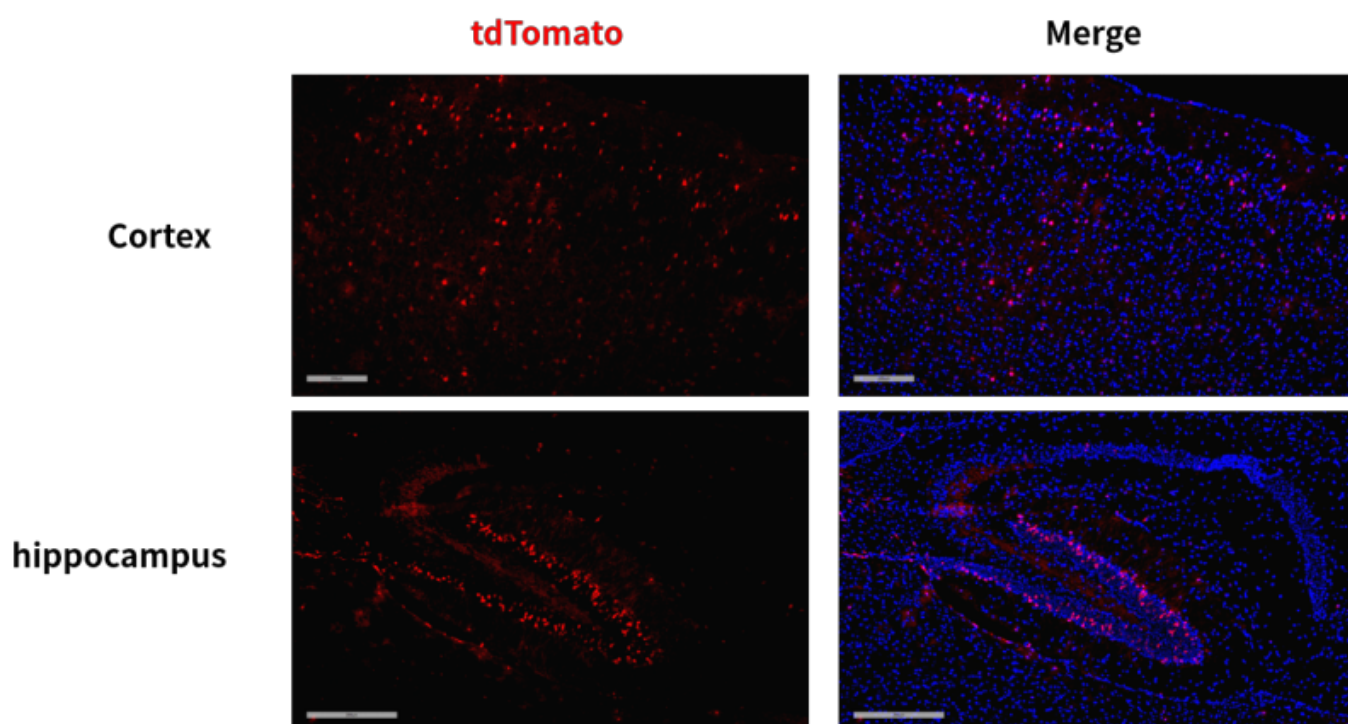


Fig. 2 Detection of tdTomato (red) in some cells of the cortex and hippocampus driven from $Gad2^{iCre/+}; Rosa26^{tdTomato/+}$ mice.

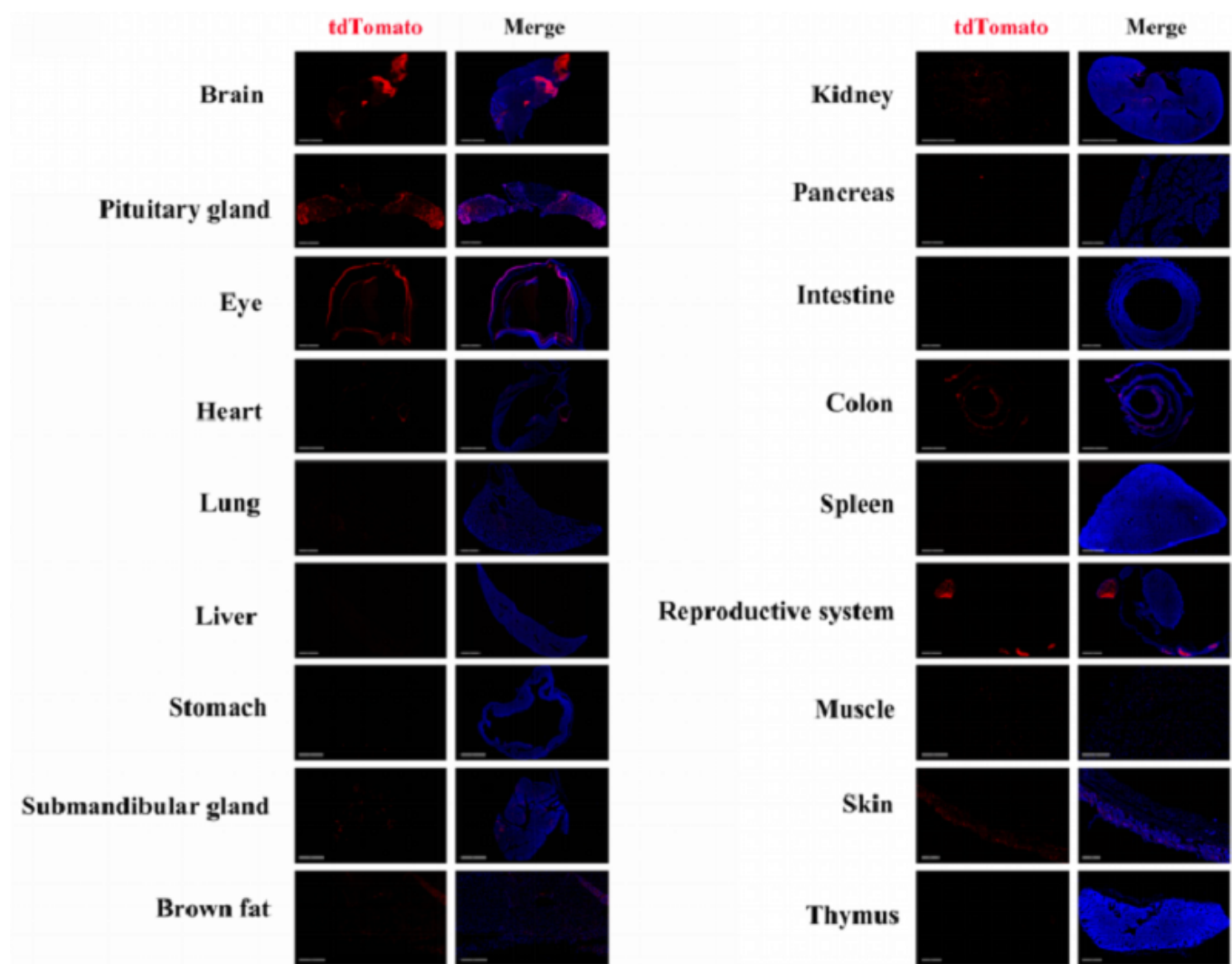


Fig. 3 Detection of tdTomato (red) in various tissues of $Gad2^{icre/+}; Rosa26^{tdTomato/+}$ mice. Cre-mediated recombination in some cells of the brain, pituitary gland, retina, lung, heart, liver, submandibular gland, brown fat, kidney, pancreas, intestine, colon, epididymis, muscle, skin and thymus can be observed. Tdtomato can not be detected in the spleen and testis. (For more detailed information please contact our technical advisor.)