

hC1S

Nomenclature	C57BL/6Smoc- <i>C1s</i> ^{em1(hC1S)/Smoc}
Cat. NO.	NM-HU-2000077
Strain State	Repository Live

Gene Summary

Gene Symbol C1s1	Synonyms	C1s; C1sa; AA959438; AI255193; AI327365
	NCBI ID	50908
	MGI ID	1355312
	Ensembl ID	ENSMUSG00000038521
	Human Ortholog	C1S1

Model Description

The endogenous mouse C1s1 gene was replaced by human C1S gene.

Research Application: Immunotherapy, drug screening

*Literature published using this strain should indicate: hC1S mice (Cat. NO. NM-HU-2000077) were purchased from Shanghai Model Organisms Center, Inc..

Validation Data

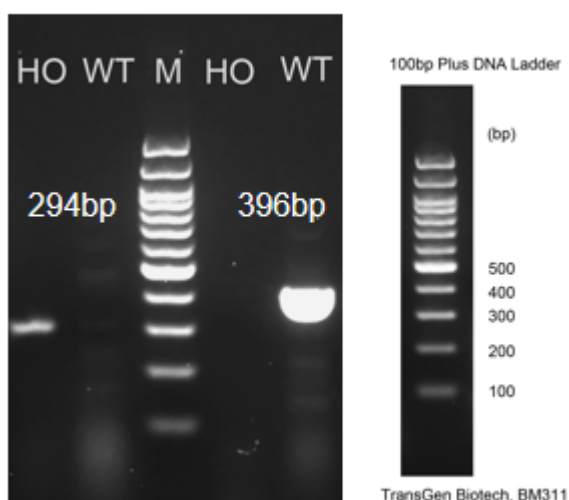


Fig1. Detection of C1S1 expression in bladder by RT-PCR. Wild type: only one band at 396 bp with primers F1/R1(mC1s1); Homozygous: only one band at 294 bp with primers F2/R2(hC1S1); Abbr. M, DNA marker; HO, homozygous; HE, heterozygous; WT, wild type.

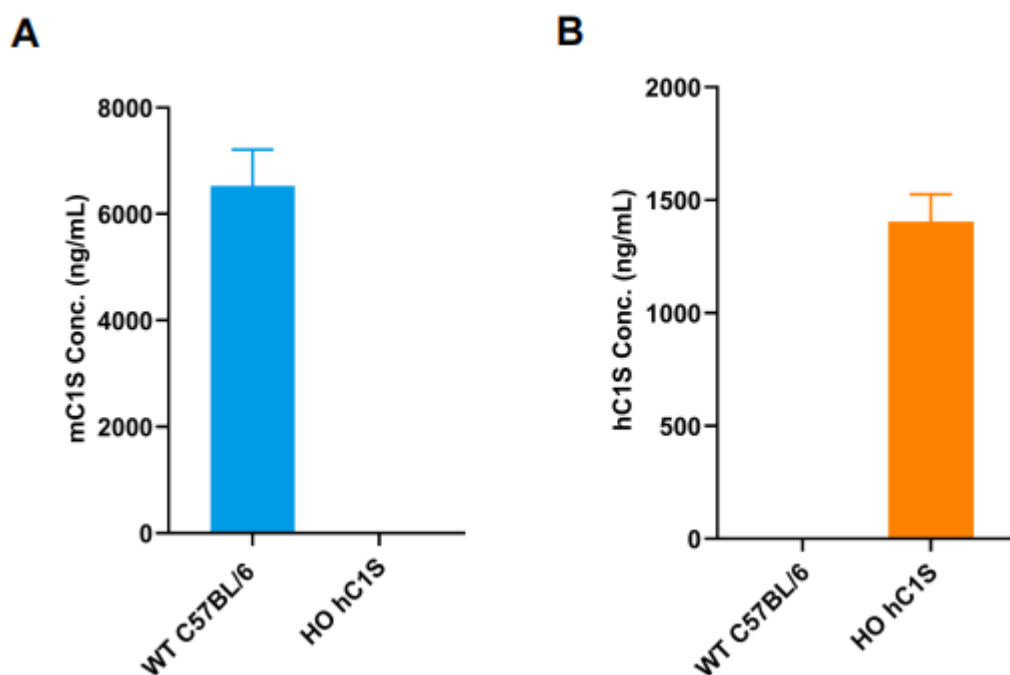


Fig2. Detection of hC1S1 expression in serum by ELISA (n=8). Abbr. HO, homozygous; WT, wild type.

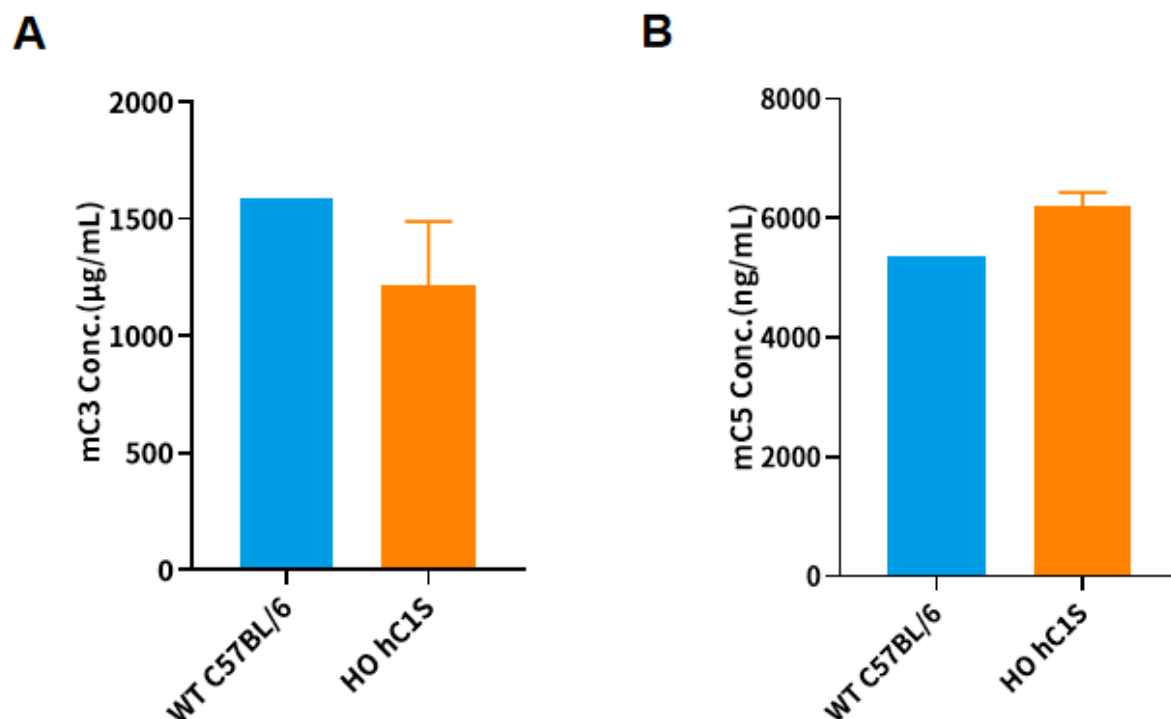


Fig3. Detection of mC3 and mC5 expression in serum hC1S1 mice by ELISA (n=3). Abbr. HO, homozygous; WT, wild type.

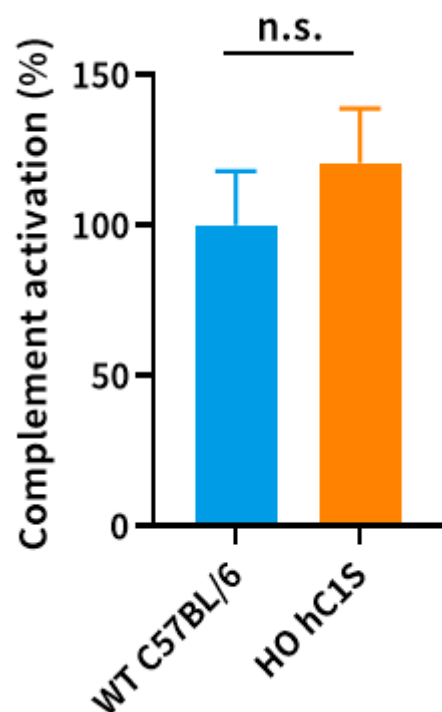


Fig .4 Detection of classical complement pathway activity in hC1S mice by ELISA.

Abbr. HO, homozygous; WT, wild type; PC, Postive Control; NC, Negative Control. Unpaired t test were used, n.s. $p > 0.05$.

