

Cd8a-2A-tdTomato-2A-Luc

Nomenclature	C57BL/6Smoc- <i>Cd8a</i> ^{em(T2A-tdTomato-P2A-Luciferase)1Smoc}
Cat. NO.	NM-KI-225025
Strain State	Repository Live

Gene Summary

Gene Symbol Cd8a	Synonyms	Ly-2; Ly-B; Ly-35; Lyt-2; BB154331
	NCBI ID	12525
	MGI ID	88346
	Ensembl ID	ENSMUSG00000053977
	Human Ortholog	CD8A

Model Description

T2A-tdTomato-P2A-Luciferase expression cassette was knocked into the Cd8a gene .

Research Application: Reporter mouse

*Literature published using this strain should indicate: Cd8a-2A-tdTomato-2A-Luc mice (Cat. NO. NM-KI-225025) were purchased from Shanghai Model Organisms Center, Inc..

Validation Data

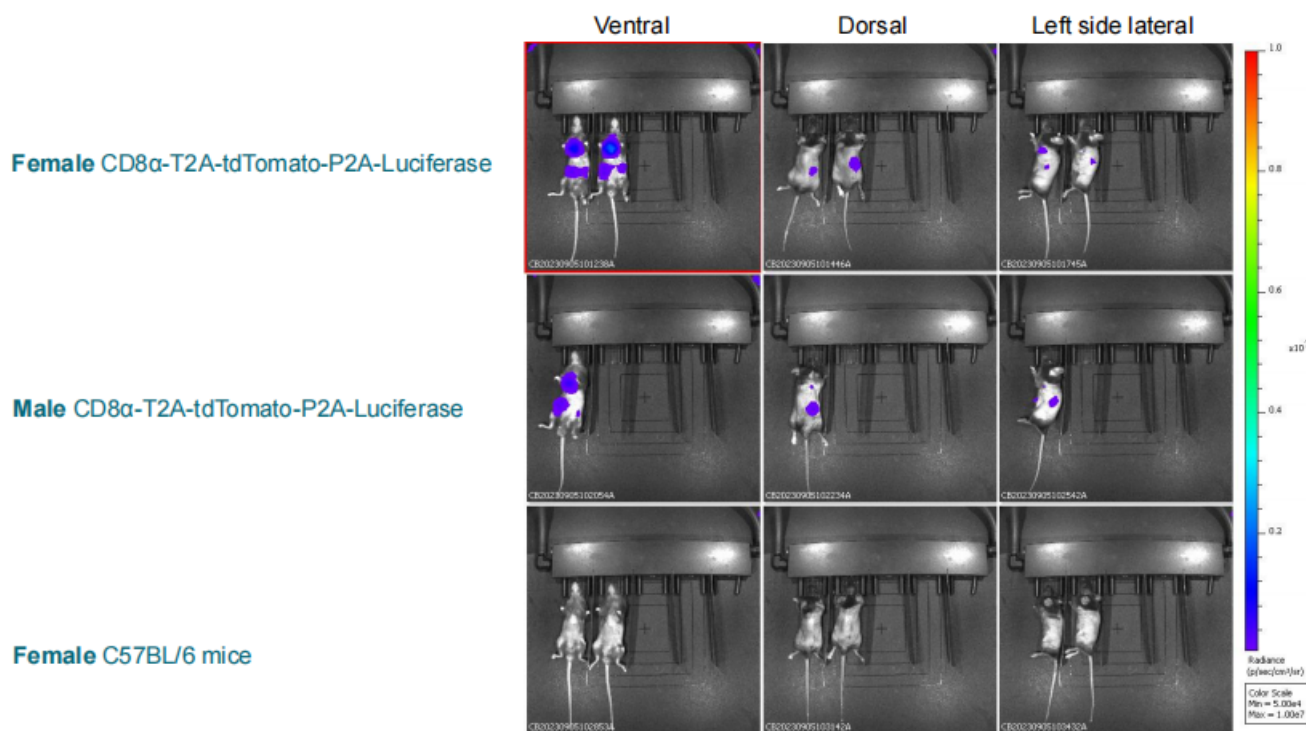


Fig.1 IVIS automatic exposure. According to the imaging process, the mice were injected with D-Luciferin, and the abdomen, back, and flanks were imaged in vivo.

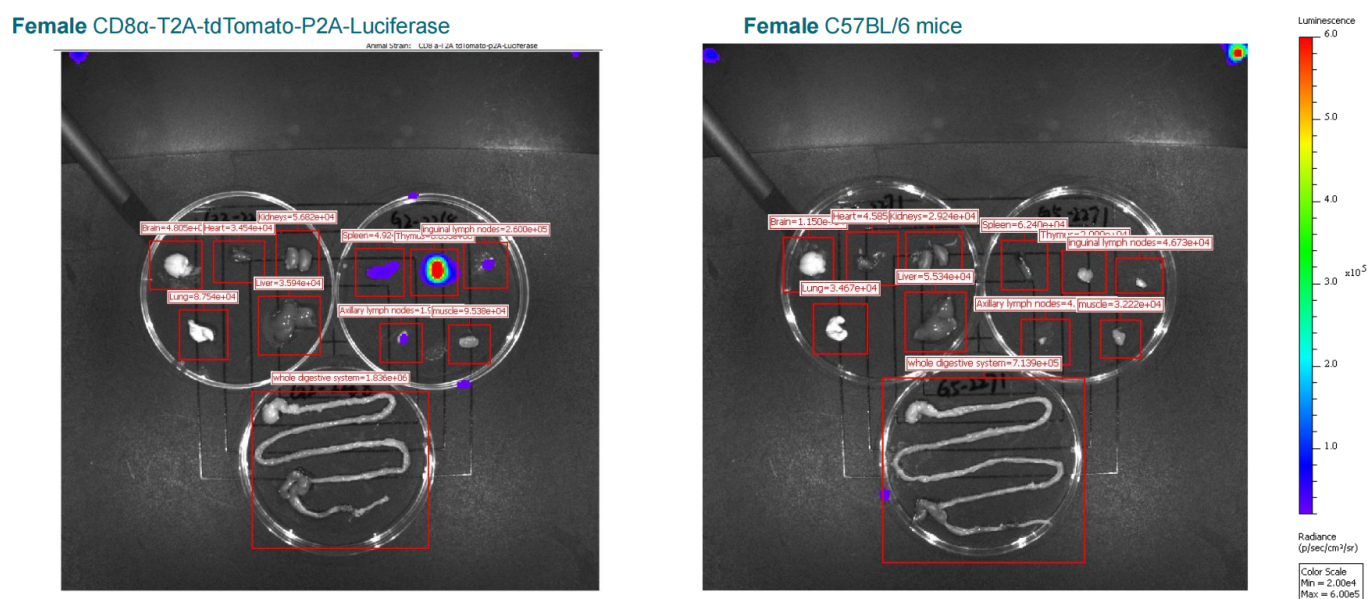


Fig.2 IVIS automatic exposure: ex vivo. According to the imaging process, D-Luciferin was injected, and the mouse brain, heart, lung, kidney, liver, spleen, thymus, inguinal lymph node, axial lymph node (Axial LN), muscle, and the entire digestive system (stomach to colon) were taken for imaging.

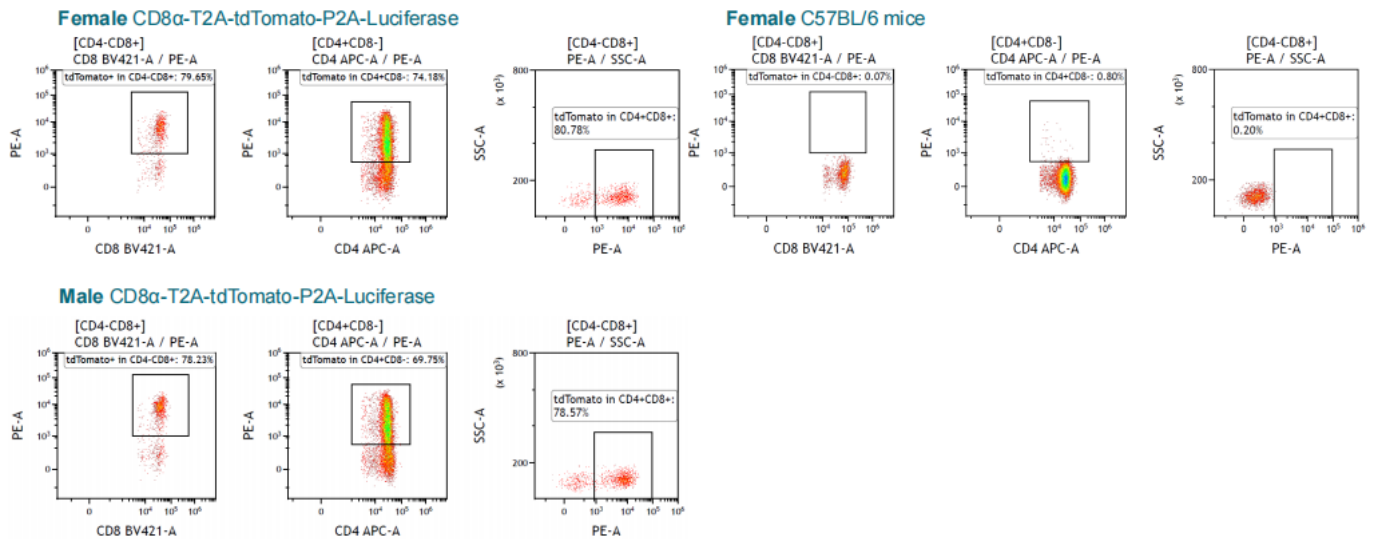


Fig.3 Detection of tdTomato in mice thymus by FACS.

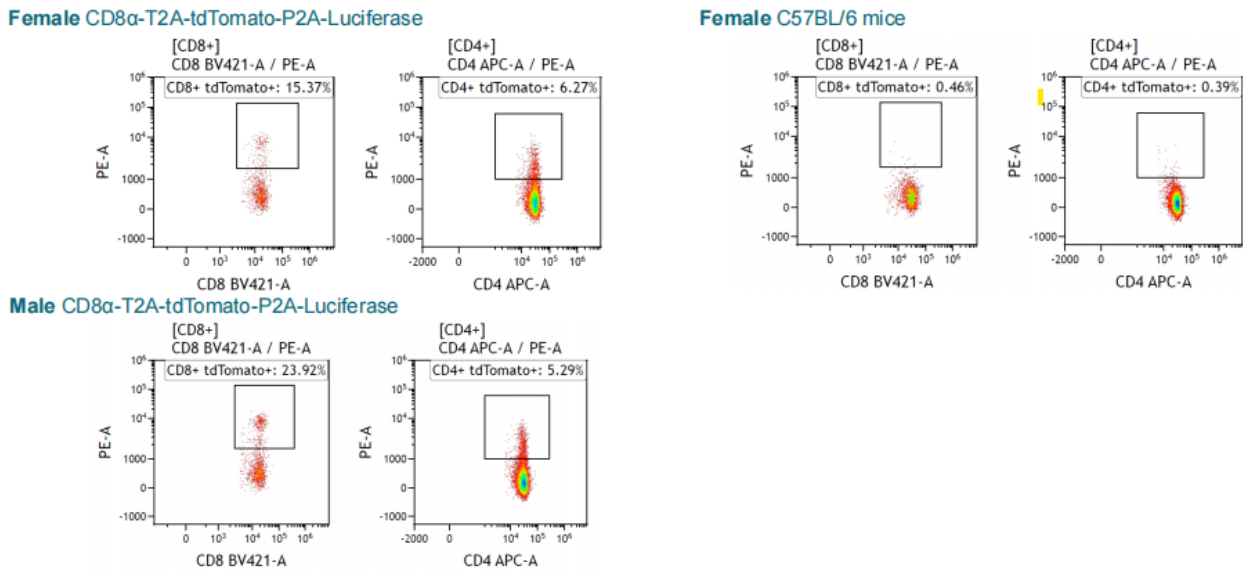


Fig.4 Detection of tdTomato in mice axillary lymph by FACS.

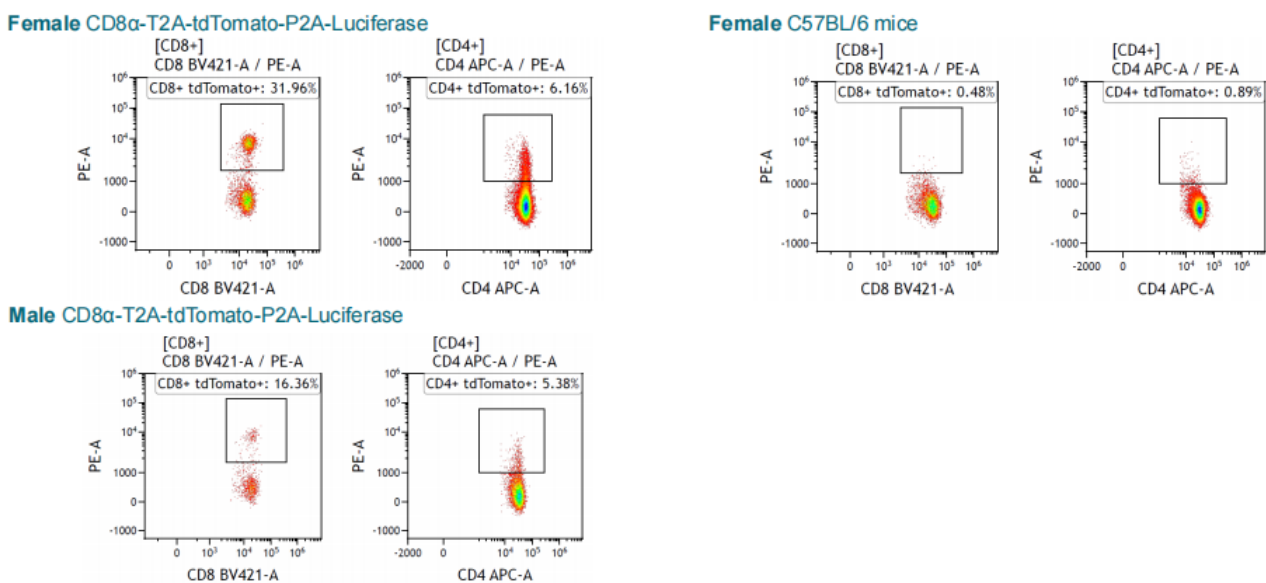
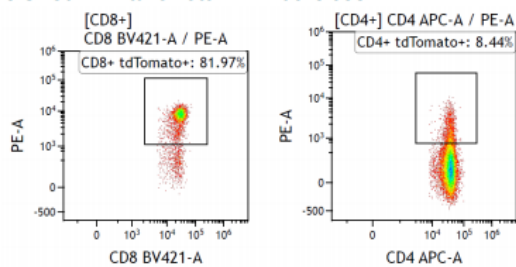
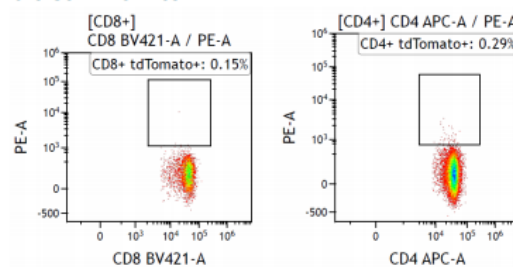


Fig.5 Detection of tdTomato in mice inguinal lymph by FACS.

Female CD8 α -T2A-tdTomato-P2A-Luciferase



Female C57BL/6 mice



Male CD8 α -T2A-tdTomato-P2A-Luciferase

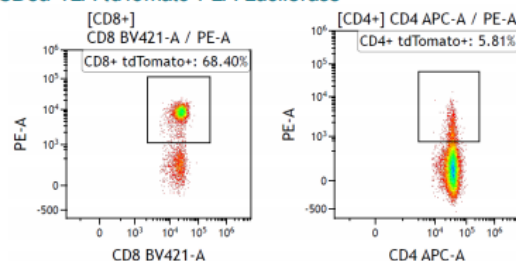
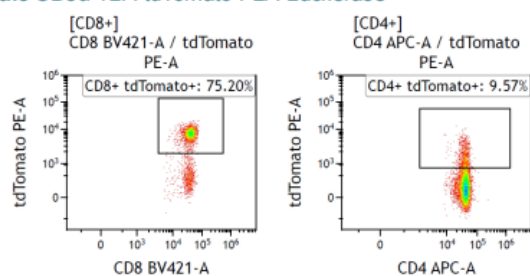
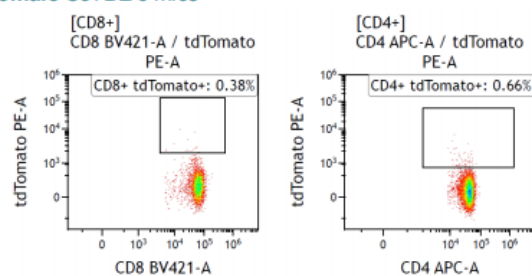


Fig.6 Detection of tdTomato in mice spleen by FACS.

Female CD8 α -T2A-tdTomato-P2A-Luciferase



Female C57BL/6 mice



Male CD8 α -T2A-tdTomato-P2A-Luciferase

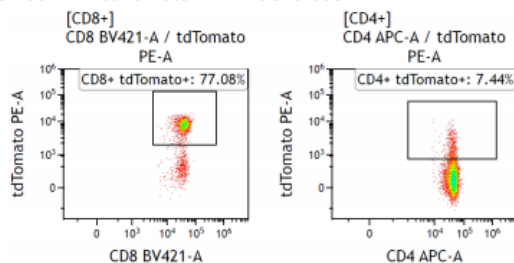


Fig.7 Detection of tdTomato in mice PB by FACS.

**The validation data above were completed in cooperation with Crownbio.*