

# JIMT-1

## Strain Information

Cat. NO.	NM-R15
Cell Line	JIMT-1
Strain State	Validation of tumorigenic capacity completed
Model Description	JIMT-1 is a carcinoma cell line (designated JIMT-1) from a pleural metastasis of a 62-year old patient with breast cancer who was clinically resistant to trastuzumab.  *Literature published using this strain should indicate: JIMT-1 cell line (Cat. NO. NM-R15) was purchased from Shanghai Model Organisms Center, Inc..

## Validation Data

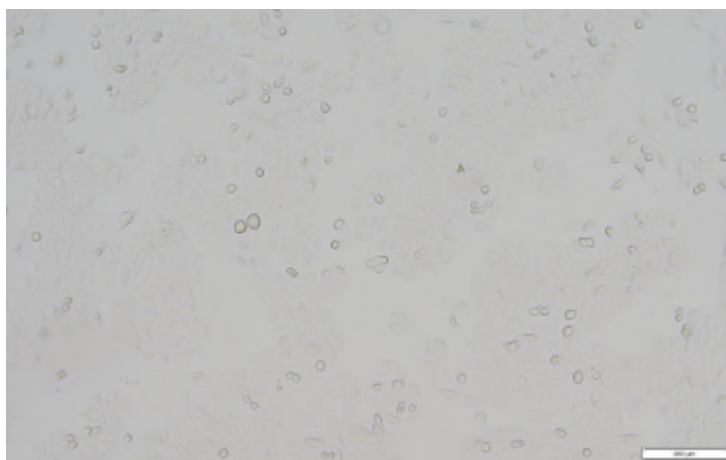
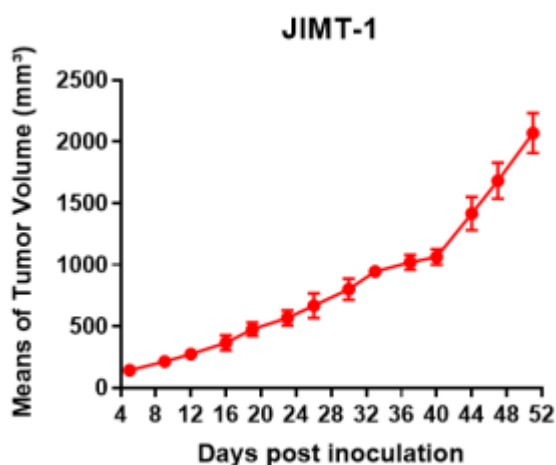
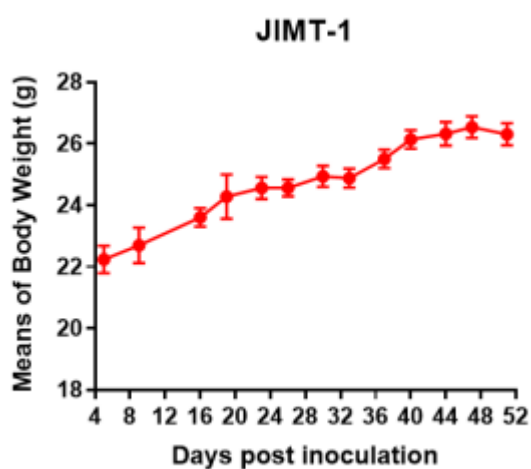


Fig1. Morphology of JIMT-1 cell line.



A



B

Fig2. Analysis of Tumorigenesis in M-NSG mice (n=5) . JIMT-1 cells were subcutaneously inoculated in M-NSG mice. a Tumor volume was measured by time. b Body weight was simultaneously checked.

\*Wild-type cell lines are not for sale, and only applied to construction of tumor bearing mice and in-vivo efficacy studies.