

KPC

Strain Information

| | |
|--------------|---|
| Cat. NO. | NM-YD04 |
| Cell Line | KPC |
| Strain State | Validation of tumorigenic capacity completed |
| Model | The KPC Cell Line was derived from the KPC mice(NM-KI-210096). |
| Description | *Literature published using this strain should indicate: KPC cell line (Cat. NO. NM-YD04) was purchased from Shanghai Model Organisms Center, Inc.. |

Validation Data

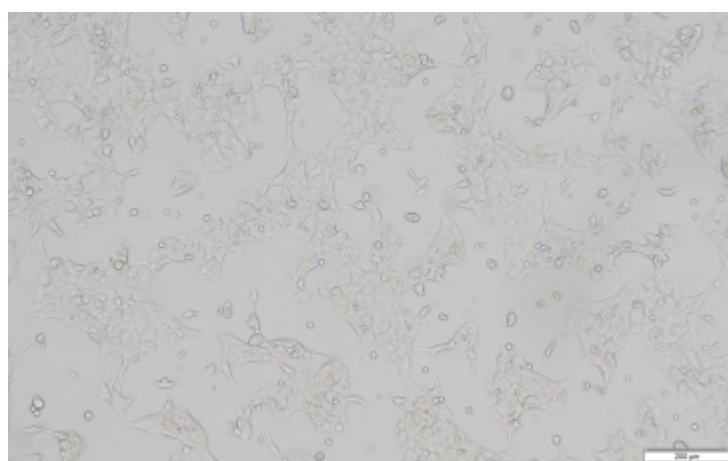
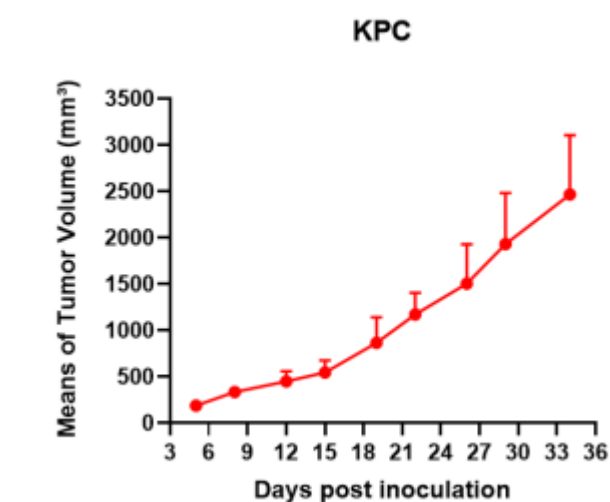
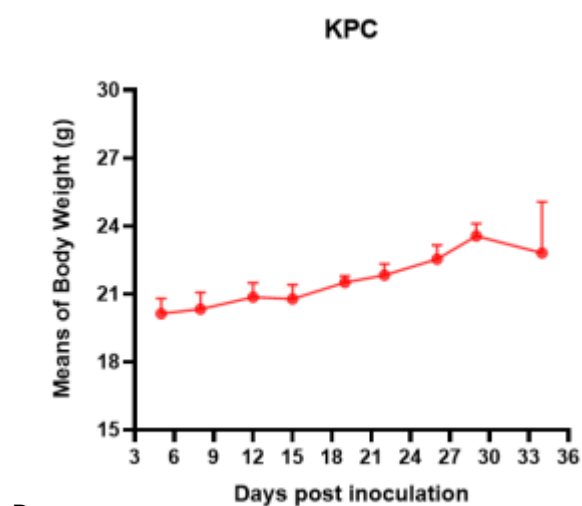


Fig1. Morphology of KPC cell line.



A



B

Fig2. Analysis of Tumorigenesis in C57BL/6 mice (n=6) . A Tumor volume was measured by time. B Body weight was simultaneously checked.