

# Panc 02.13

## Strain Information

Cat. NO.	NM-Y04
Cell Line	Panc 02.13
Strain State	Validation of tumorigenic capacity completed
Model Description	<p>Panc 02.13 is a pancreatic adenocarcinoma epithelial cell line derived in 1995 from a primary tumor removed from the head-of-the-pancreas of a female with pancreatic adenocarcinoma.</p> <p>*Literature published using this strain should indicate: Panc 02.13 cell line (Cat. NO. NM-Y04) was purchased from Shanghai Model Organisms Center, Inc..</p>

---

## Validation Data

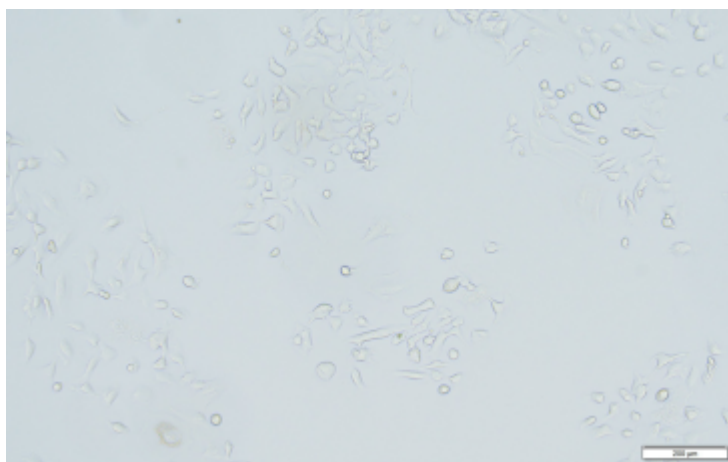
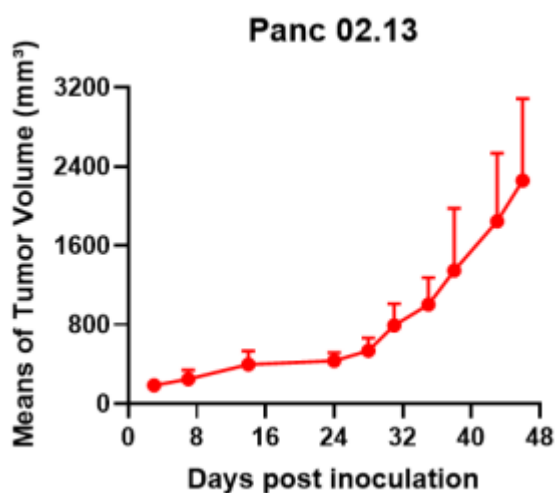
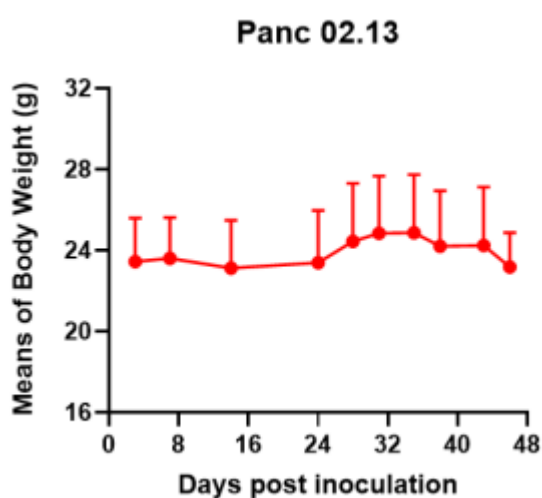


Fig1. Morphology of Panc 02.13 cell line.



A



B

Fig2. Analysis of Tumorigenesis in M-NSG mice (n=4) . A Tumor volume was measured by time. B Body weight was simultaneously checked.

\*Wild-type cell lines are not for sale, and only applied to construction of tumor bearing mice and in-vivo efficacy studies.