

# NUGC4-Luc

## Strain Information

|              |   |
|--------------|---|
| Cat. NO.     | NM-W06-TG01   |
| Cell Line    | NUGC4-Tg(luc)/smoc  |
| Strain State | Validation of tumorigenic capacity completed  |
| Model        | Luciferase-labeled human NUGC4 cell   |
| Description  | *Literature published using this strain should indicate: NUGC4-Luc cell line (Cat. NO. NM-W06-TG01) was purchased from Shanghai Model Organisms Center, Inc.. |

## Validation Data

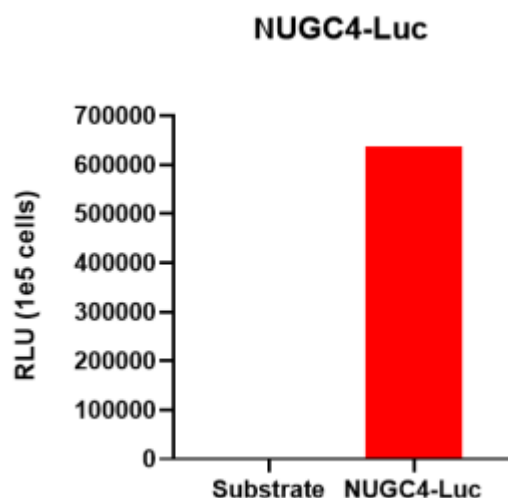


Fig1. Luciferase activity assay of NUGC4-Luc cell line

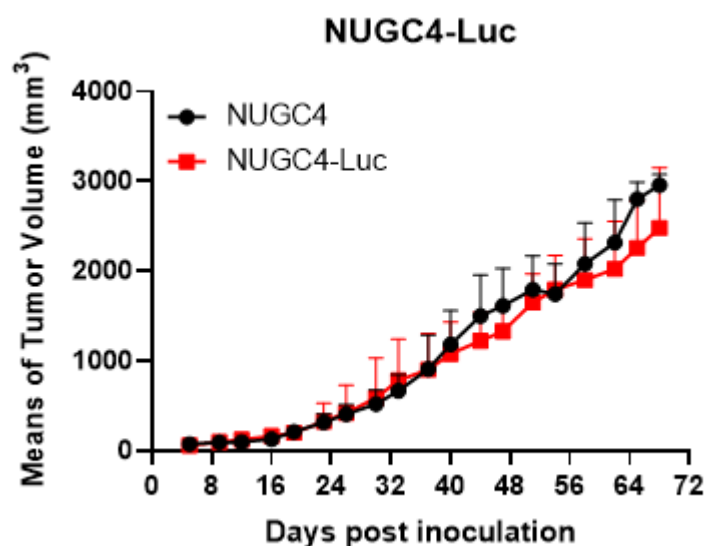


Fig2. Tumor growth curve of NUGC4-Luc xenograft model (n=5)

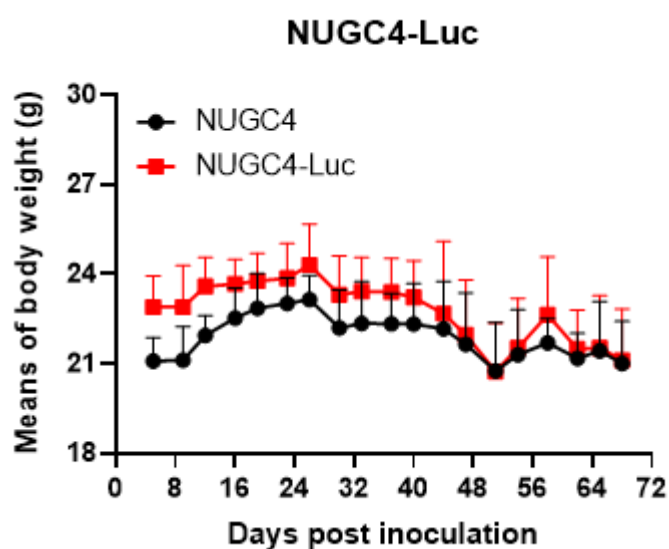


Fig3. Body weight change of NUGC4-Luc xenograft model (n=5)

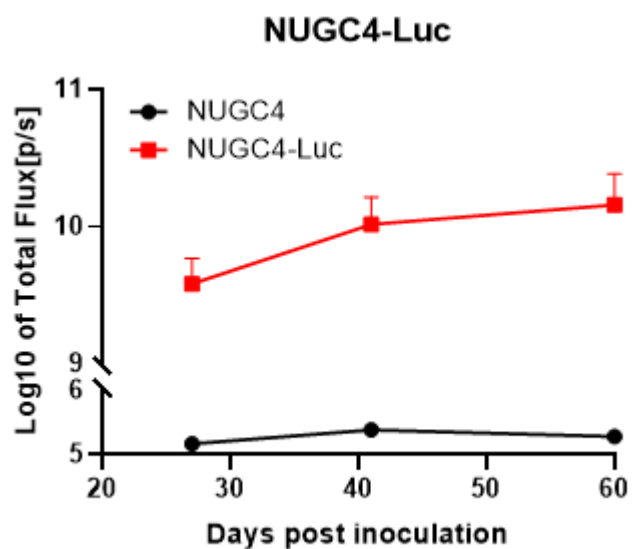


Fig4. Signal collection on few days at location of tumor inoculation (n=5)

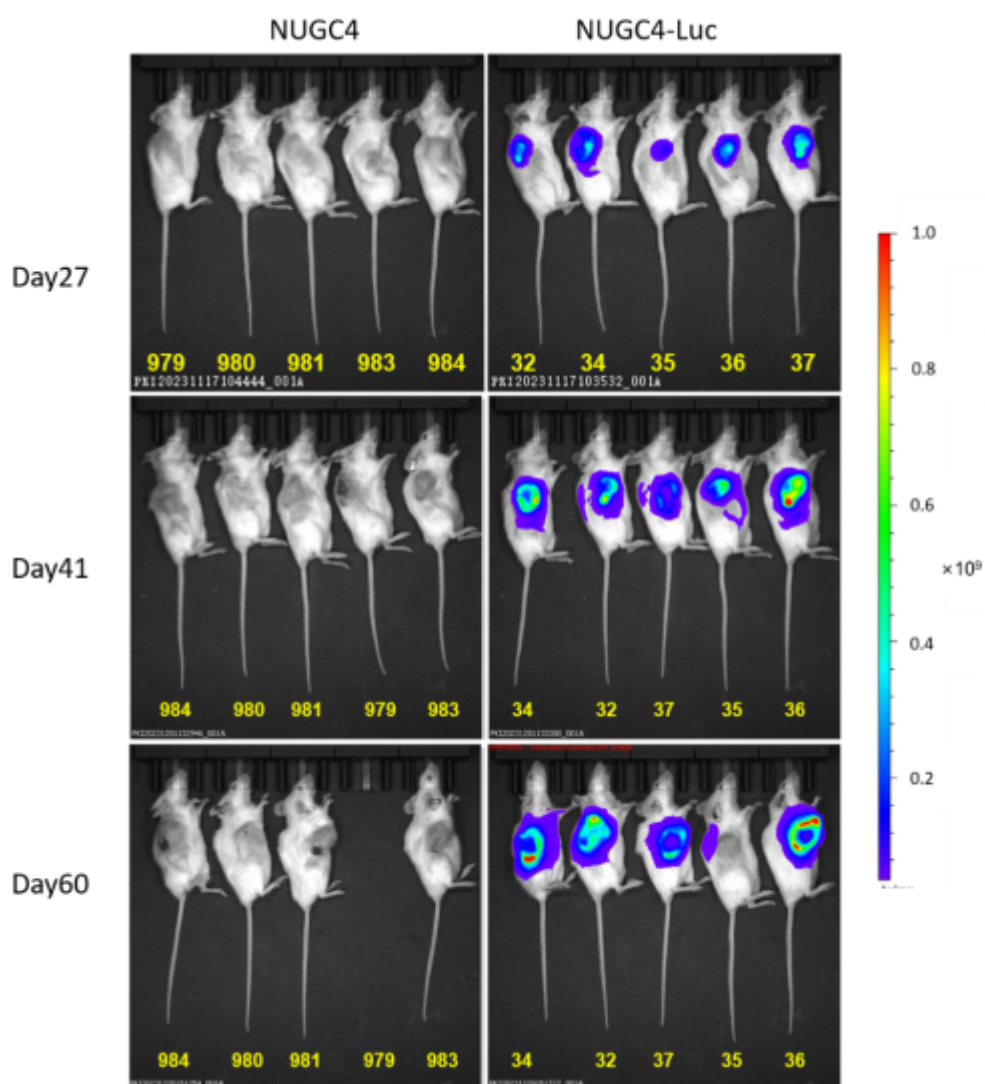


Fig5. Bioluminescence imaging of NUGC4-Luc xenograft mouse model

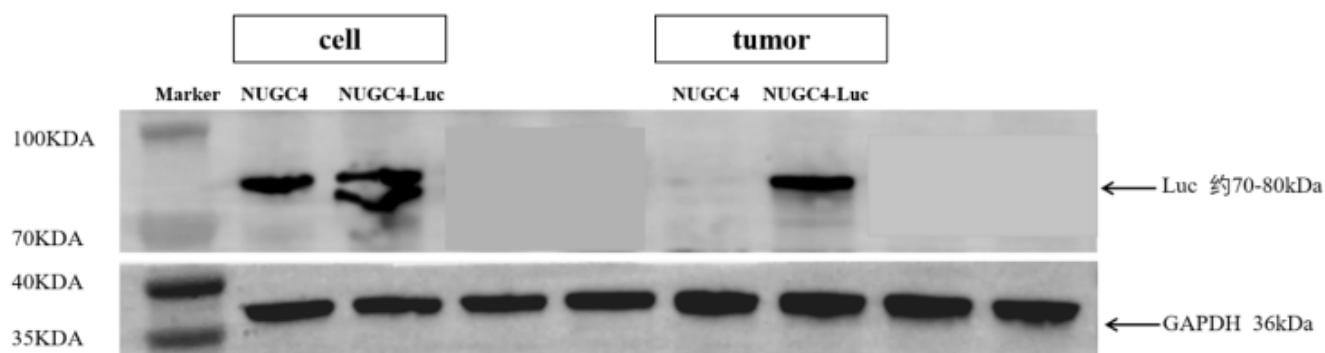


Fig6. The protein expression of Luciferase in tumors by Western Blot