

Ncr1-IRES-Cre

Nomenclature	C57BL/6Smoc- <i>Ncr1</i> ^{em(IRES-Cre)} 1Smoc
Cat. NO.	NM-KI-225008
Strain State	Sperm cryopreservation

Gene Summary

Gene Symbol Ncr1	Synonyms	Ly94; NKp46
	NCBI ID	17086
	MGI ID	1336212
	Ensembl ID	ENSMUSG000000062524
	Human Ortholog	NCR1

Model Description

IRES-Cre expression cassette was knocked into the *Ncr1* gene .

*Literature published using this strain should indicate: *Ncr1*-IRES-Cre mice (Cat. NO. NM-KI-225008) were purchased from Shanghai Model Organisms Center, Inc..

Validation Data

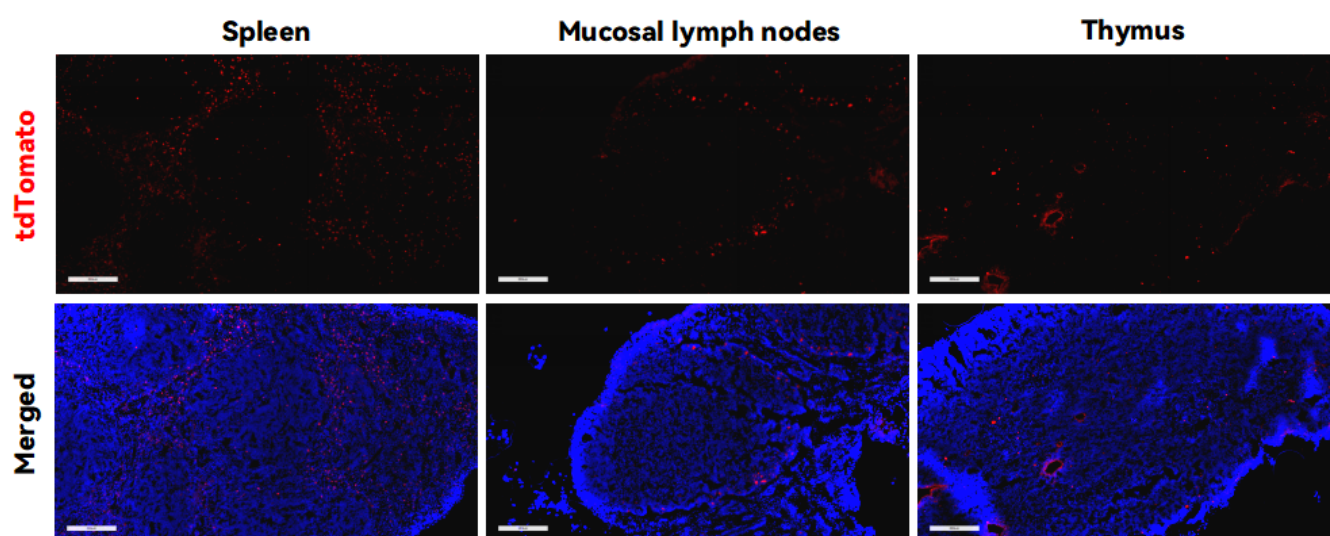


Fig1. Cre mediated recombination in spleen, lymph nodes and thymus of *Ncr1*^{Cre/+}; *Rosa26*^{tdTomato/+}

mouse.

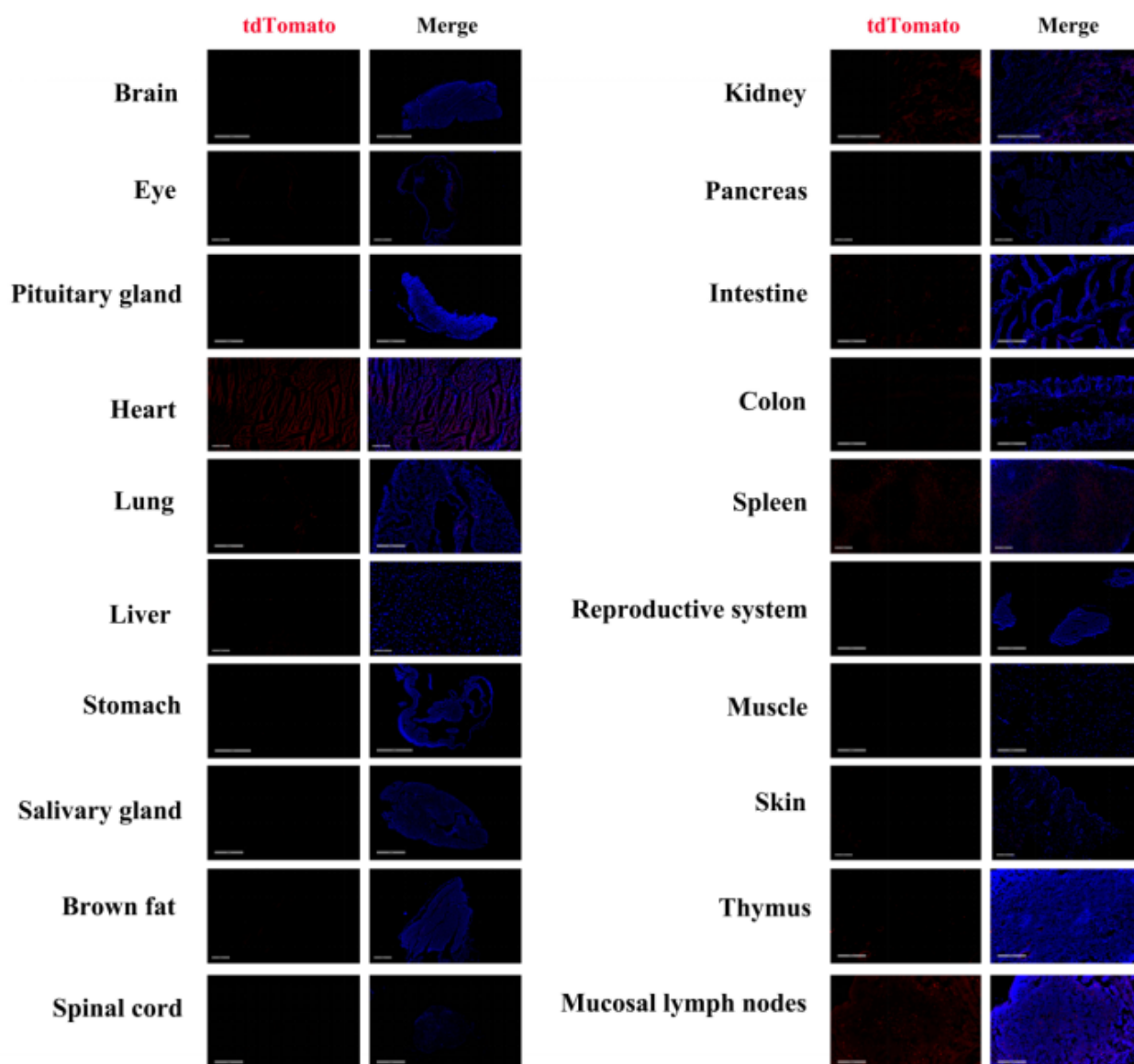


Fig2. Detection of tdTomato (red) in various tissues of *Ncr1^{Cre/+};Rosa26^{tdTomato/+}* mice. (For more detailed information please contact our technical advisor.)