

hCFD

Nomenclature	C57BL/6Smoc- <i>Cfd</i> ^{em1(hCFD)Smoc}
Cat. NO.	NM-HU-225045
Strain State	Sperm cryopreservation

Gene Summary

Gene Symbol Cfd	Synonyms	DF; Adn
	NCBI ID	11537
	MGI ID	87931
	Ensembl ID	ENSMUSG00000061780
	Human Ortholog	CFD

Model Description

The endogenous mouse *Cfd* gene was replaced by human CFD gene.

*Literature published using this strain should indicate: hCFD mice (Cat. NO. NM-HU-225045) were purchased from Shanghai Model Organisms Center, Inc..

Validation Data

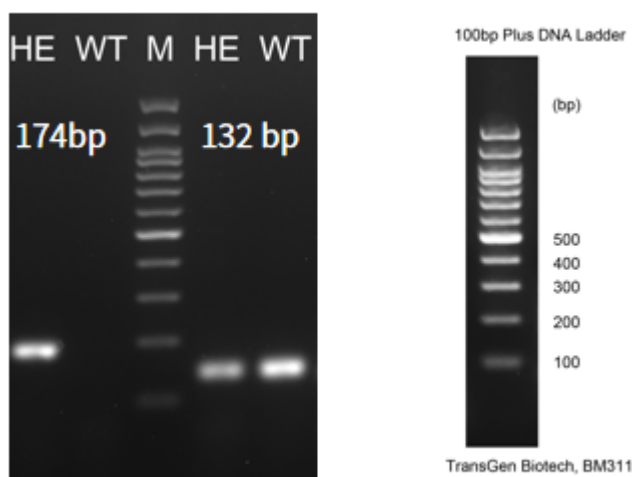


Fig1. Detection of CFD expression in kidney by RT-PCR. Wild type: only one band at 132 bp with primers F1/R1 (mCfd); Heterozygous: one band at 132 bp with primers F1/R1 (mCfd) and one band at 174 bp with primers F2/R2 (hCFD); Abbr. M, DNA marker; HE, heterozygous; WT, wild type.

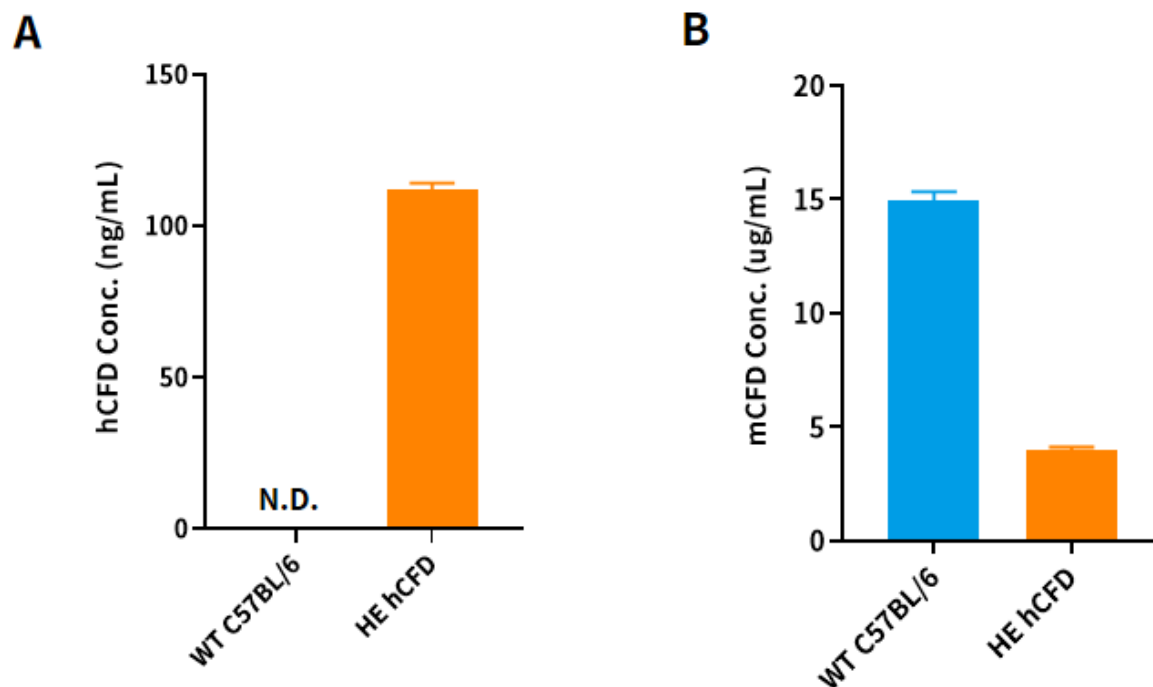


Fig2. Detection of hCFD and mCFD expression in serum by ELISA. Abbr. HE, heterozygous; WT, wild type.