

# hCB1

<b>Nomenclature</b>	C57BL/6Smoc- <i>Cnr1</i> <sup>em1(hCB1)Smoc</sup>
<b>Cat. NO.</b>	NM-HU-225027
<b>Strain State</b>	Repository Live

## Gene Summary

<b>Gene Symbol</b> <b>Cnr1</b>	<b>Synonyms</b>	CB1; CB-R; CB1R
	<b>NCBI ID</b>	<a href="#">12801</a>
	<b>MGI ID</b>	<a href="#">104615</a>
	<b>Ensembl ID</b>	<a href="#">ENSMUSG00000044288</a>
	<b>Human Ortholog</b>	CNR1

## Model Description

The endogenous mouse *Cnr1* gene was replaced by human CB1 gene.

\*Literature published using this strain should indicate: hCB1 mice (Cat. NO. NM-HU-225027) were purchased from Shanghai Model Organisms Center, Inc..

## Validation Data

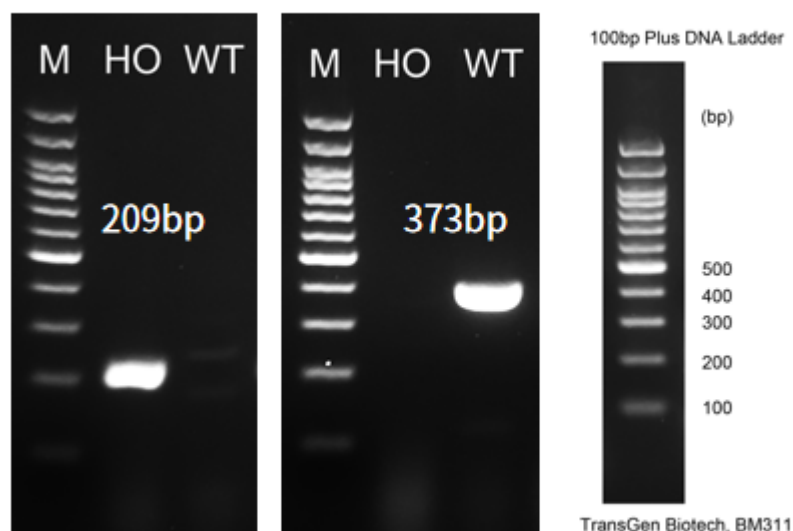


Fig1. Detection of CB1 expression in cerebellum by RT-PCR.

Wild type: only one band at 373 bp with primers F1/R1(mCb1);

Homozygous: only one band at 209 bp with primers F2/R2(hCB1);

Abbr. M, DNA marker; HO, homozygous; WT, wild type.

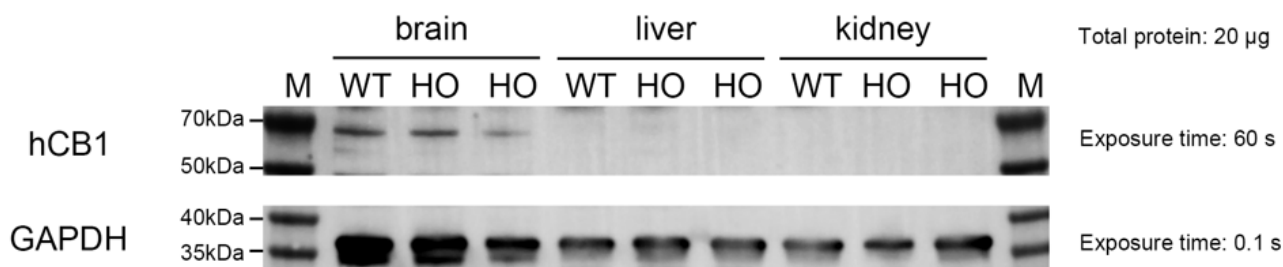
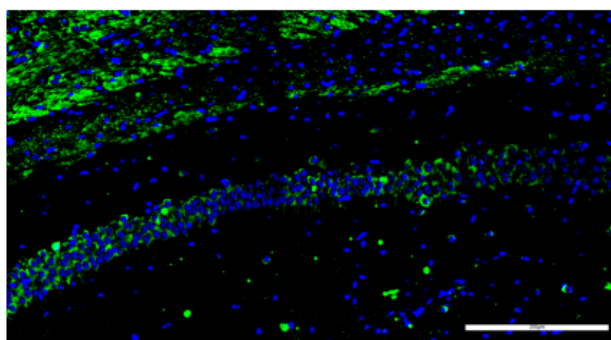


Fig2. Detection of human CB1 expression in Brains, liver and kidney in hCB1 knockin mice by WB.

Abbr. HO, homozygous; WT, wild type.

Note. The anti-human CB1 Antibody cross-reacted with mouse CB1 and humanized CB1.

**WT C57BL/6**



**HO hCB1**

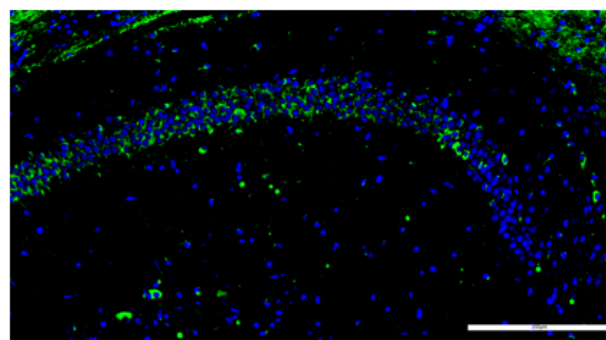


Fig3. Detection of human CB1 expression in CA1 in hCB1 knockin mice by IF.

Brains were collected from wild-type mice and HO hCB1 mice, and analyzed by IF with anti-human CB1 antibody.

Abbr. HO, homozygous; WT, wild type.

Note. The anti-human CB1 Antibody cross-reacted with mouse CB1 and humanized CB1.

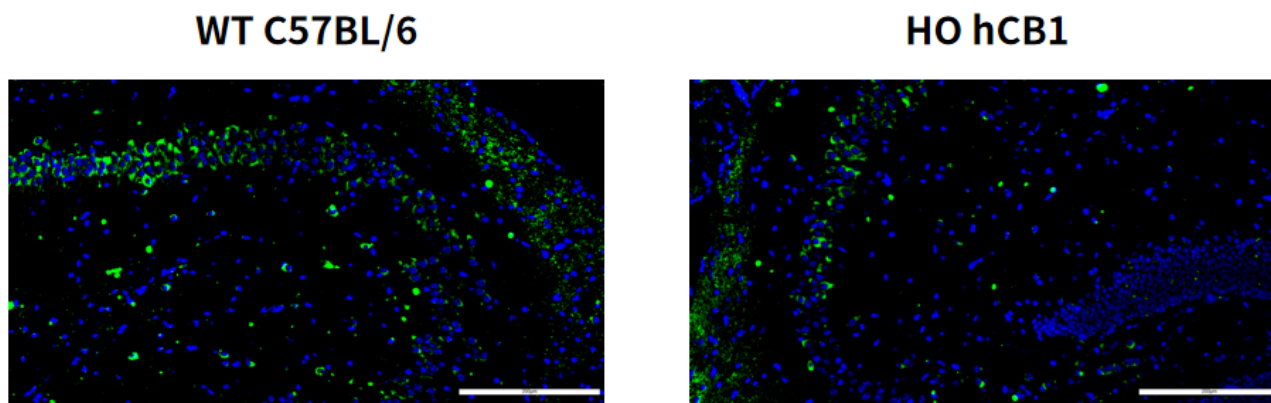


Fig4. Detection of human CB1 expression in CA3 in hCB1 knockin mice by IF.

Brains were collected from wild-type mice and HO hCB1 mice, and analyzed by IF with anti-human CB1 antibody.

Abbr. HO, homozygous; WT, wild type.

Note. The anti-human CB1 Antibody cross-reacted with mouse CB1 and humanized CB1.

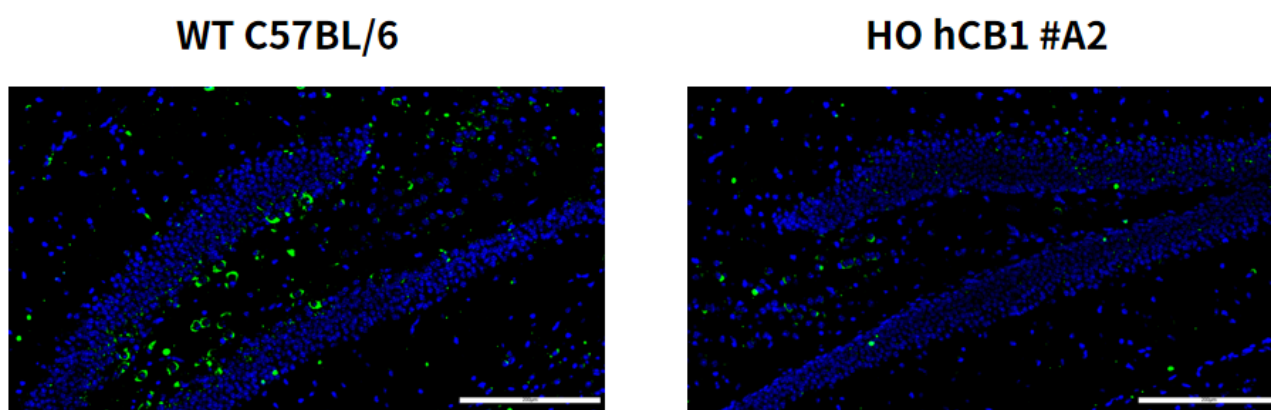


Fig5. Detection of human CB1 expression in dentate gyrus(DG) in hCB1 knockin mice by IF.

Brains were collected from wild-type mice and HO hCB1 mice, and analyzed by IF with anti-human CB1 antibody.

Abbr. HO, homozygous; WT, wild type.

Note. The anti-human CB1 Antibody cross-reacted with mouse CB1 and humanized CB1.

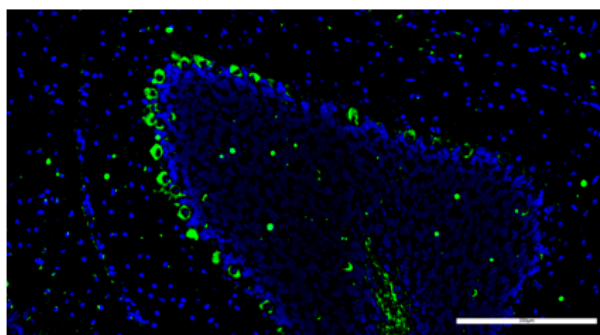
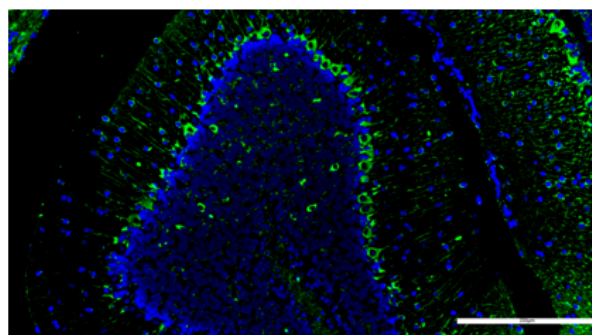
**WT C57BL/6****HO hCB1 #A2**

Fig6. Detection of human CB1 expression in cerebellum in hCB1 knockin mice by IF.

Brains were collected from wild-type mice and HO hCB1 mice, and analyzed by IF with anti-human CB1 antibody.

Abbr. HO, homozygous; WT, wild type.

Note. The anti-human CB1 Antibody cross-reacted with mouse CB1 and humanized CB1.