

Tmem119-IRES-Cre

| | |
|---------------------|---|
| Nomenclature | C57BL/6Smoc- <i>Tmem119em1(IRES-Cre)</i> Smoc |
| Cat. NO. | NM-KI-225007 |
| Strain State | Repository Live |

Gene Summary

| | | |
|--------------------------------------|-----------------------|------------------------------------|
| Gene Symbol Tmem119 | Synonyms | obif; AW208946; BC025600 |
| | NCBI ID | 231633 |
| | MGI ID | 2385228 |
| | Ensembl ID | ENSMUSG00000054675 |
| | Human Ortholog | TMEM119 |

Model Description

IRES-Cre expression cassette was knocked into the Tmem119 gene stop codon site.

*Literature published using this strain should indicate: Tmem119-IRES-Cre mice (Cat. NO. NM-KI-225007) were purchased from Shanghai Model Organisms Center, Inc..

Validation Data

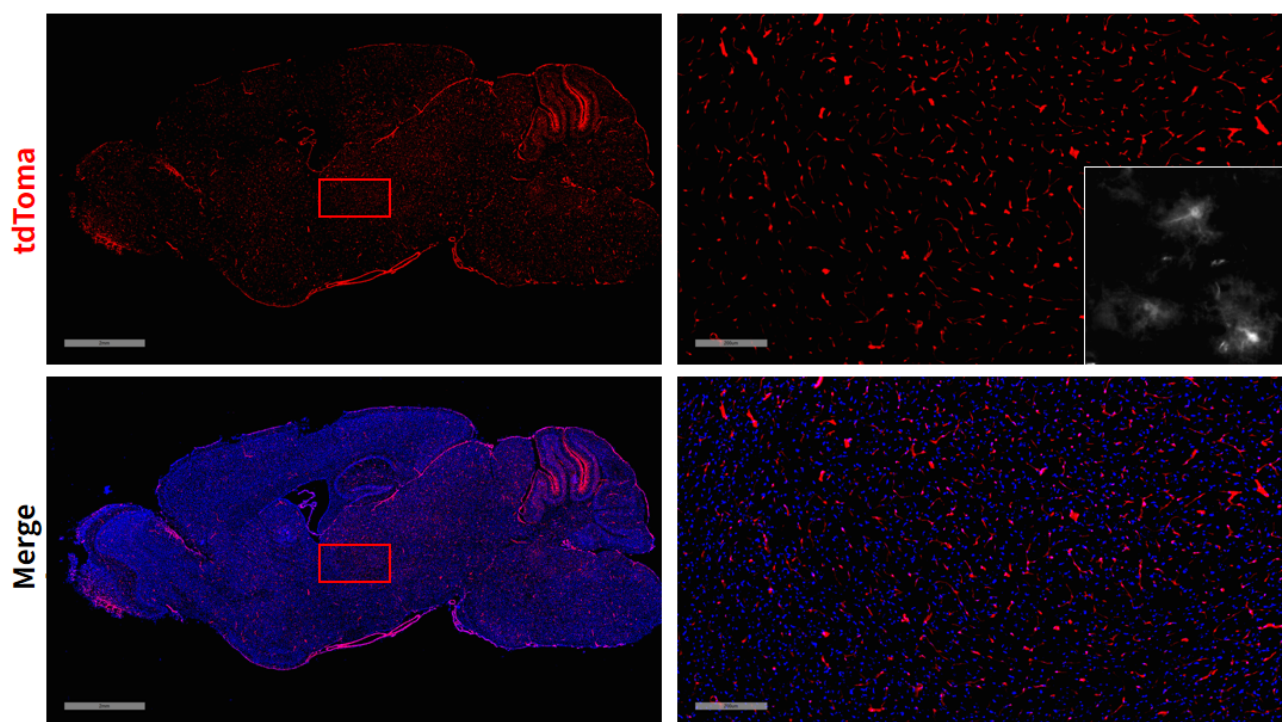


Fig1. Cre mediated recombination in brain of *Tmem119*^{Cre/+};*Rosa26*^{tdTomato/+} mouse.

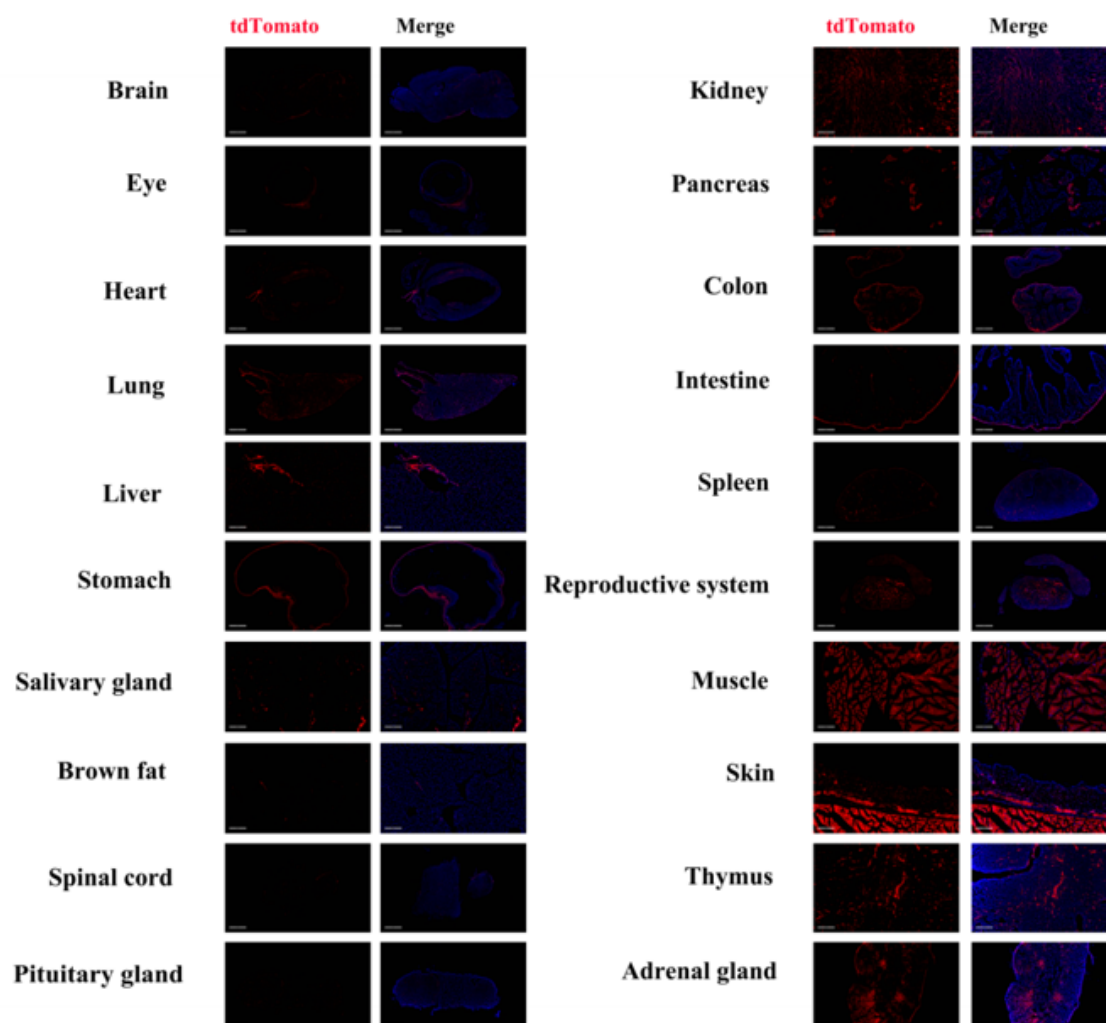


Fig2. Detection of tdTomato(red) in various tissues of ED-L2Cre/+;Rosa26tdTomato/+ mouse. Expression tissues include: brain, heart, lung, liver, stomach, salivary gland, spinal cord, pituitary gland, kidney, pancreas, colon, small intestine, spleen, testis, epididymis, muscle, thymus, adrenal gland. A few cells expressed in eyeball, brown fat, epidermis. (8-weeks old, male) (For more detailed information please contact our technical advisor.)
