

Cyp19a1-IRES-Cre

| | |
|---------------------|---|
| Nomenclature | C57BL/6Smoc- <i>Cyp19a1</i> ^{em(IRES-Cre)Smoc} |
| Cat. NO. | NM-KI-215089 |
| Strain State | Repository Live |

Gene Summary

| | | |
|-------------------------------|-----------------------|--|
| Gene Symbol Cyp19a1 | Synonyms | Ar; ArKO; Int5; Cyp19; Int-5; p450arom |
| | NCBI ID | 13075 |
| | MGI ID | 88587 |
| | Ensembl ID | ENSMUSG00000032274 |
| | Human Ortholog | CYP19A1 |

Model Description

IRES-Cre expression cassette was knocked into the Cyp19a1 gene .

*Literature published using this strain should indicate: Cyp19a1-IRES-Cre mice (Cat. NO. NM-KI-215089) were purchased from Shanghai Model Organisms Center, Inc..

Validation Data

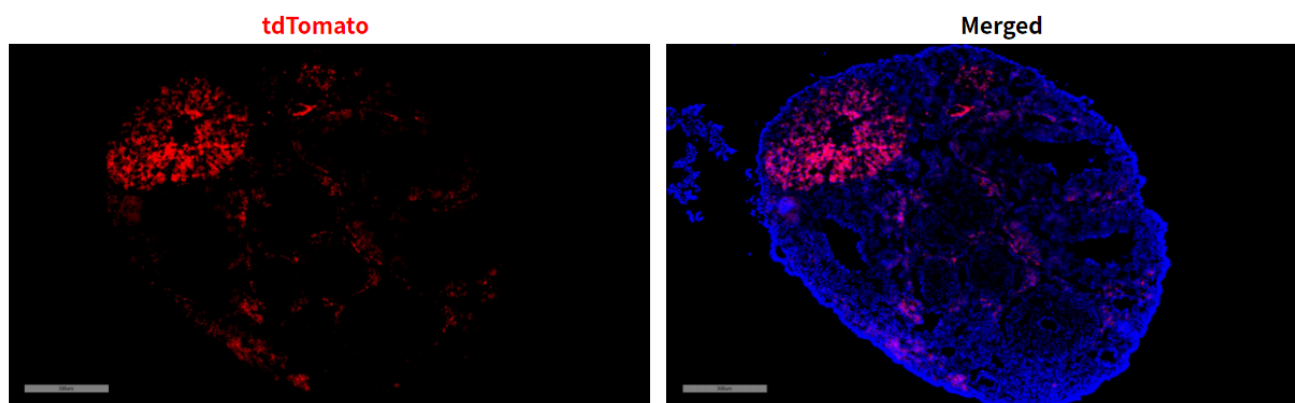


Fig 1. Cre-mediated recombination in ovary of Cyp19a1^{Cre/+}; Rosa26^{tdTomato/+} mice.

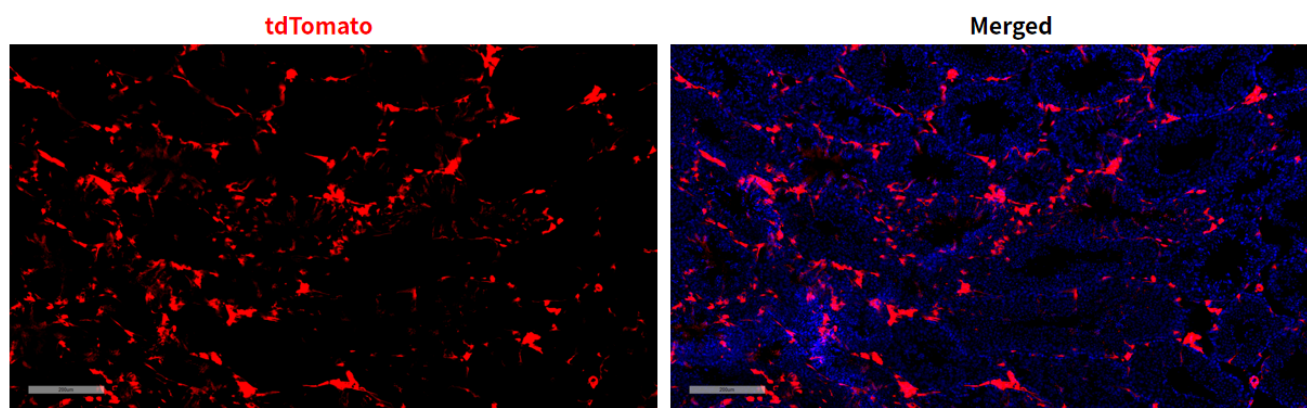


Fig 2. Cre-mediated recombination in testis of Cyp19a1^{Cre/+}; Rosa26^{tdTomato/+} mice.

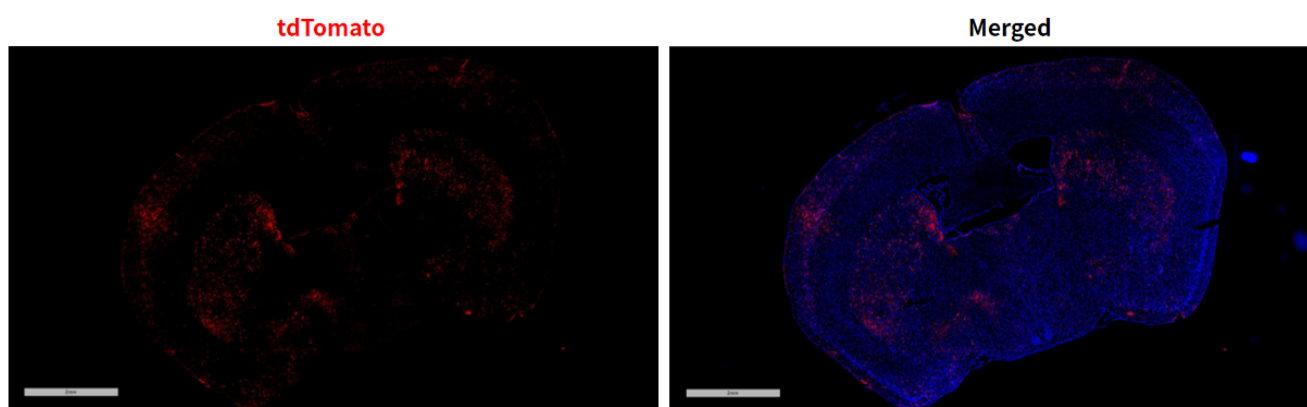


Fig 3. Cre-mediated recombination in brain of Cyp19a1^{Cre/+}; Rosa26^{tdTomato/+} female mice.

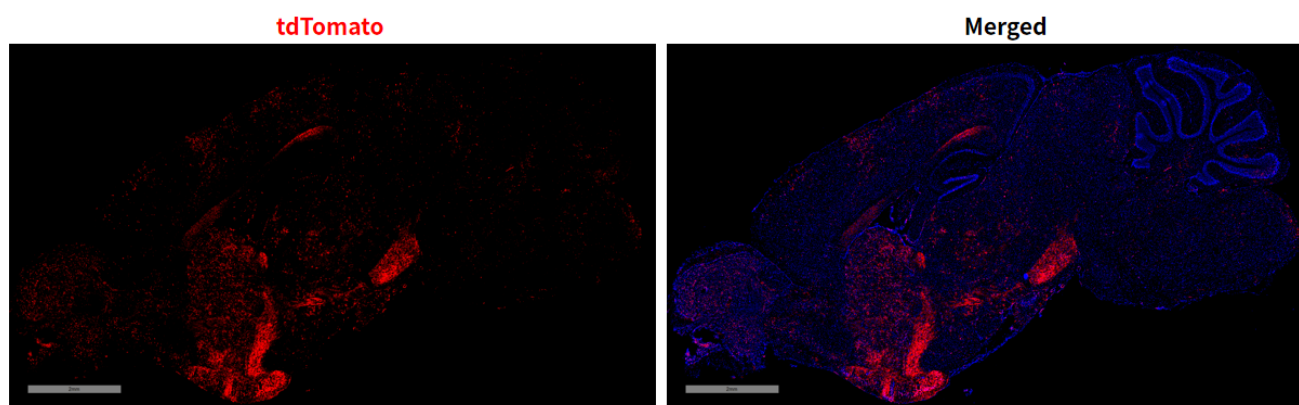


Fig 4. Cre-mediated recombination in brain of Cyp19a1^{Cre/+}; Rosa26^{tdTomato/+} male mice.

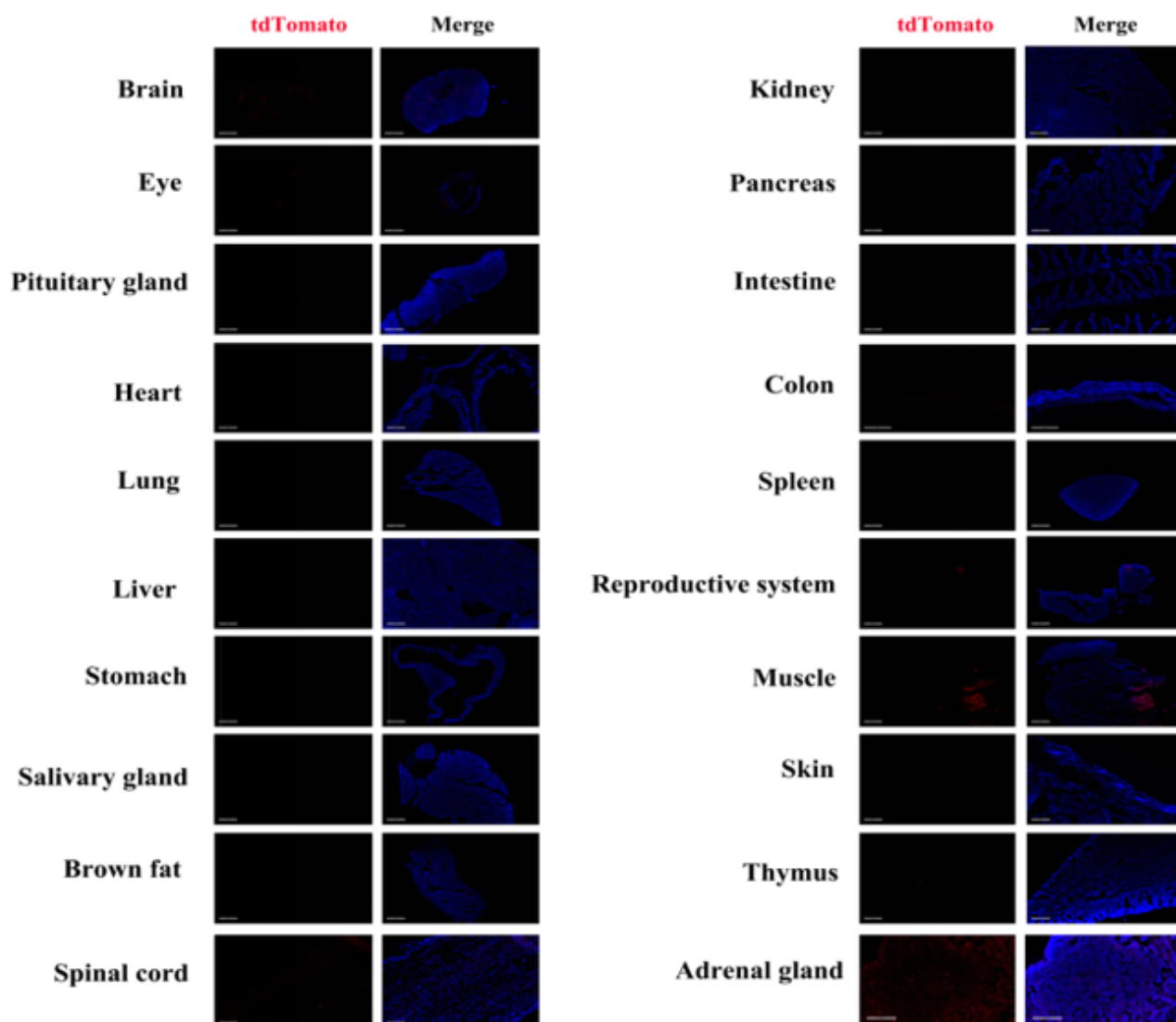


Fig 5. Detection of tdTomato (red) in various tissues of $Cyp19a1^{Cre/+}$; $Rosa26^{tdTomato/+}$ female mice.

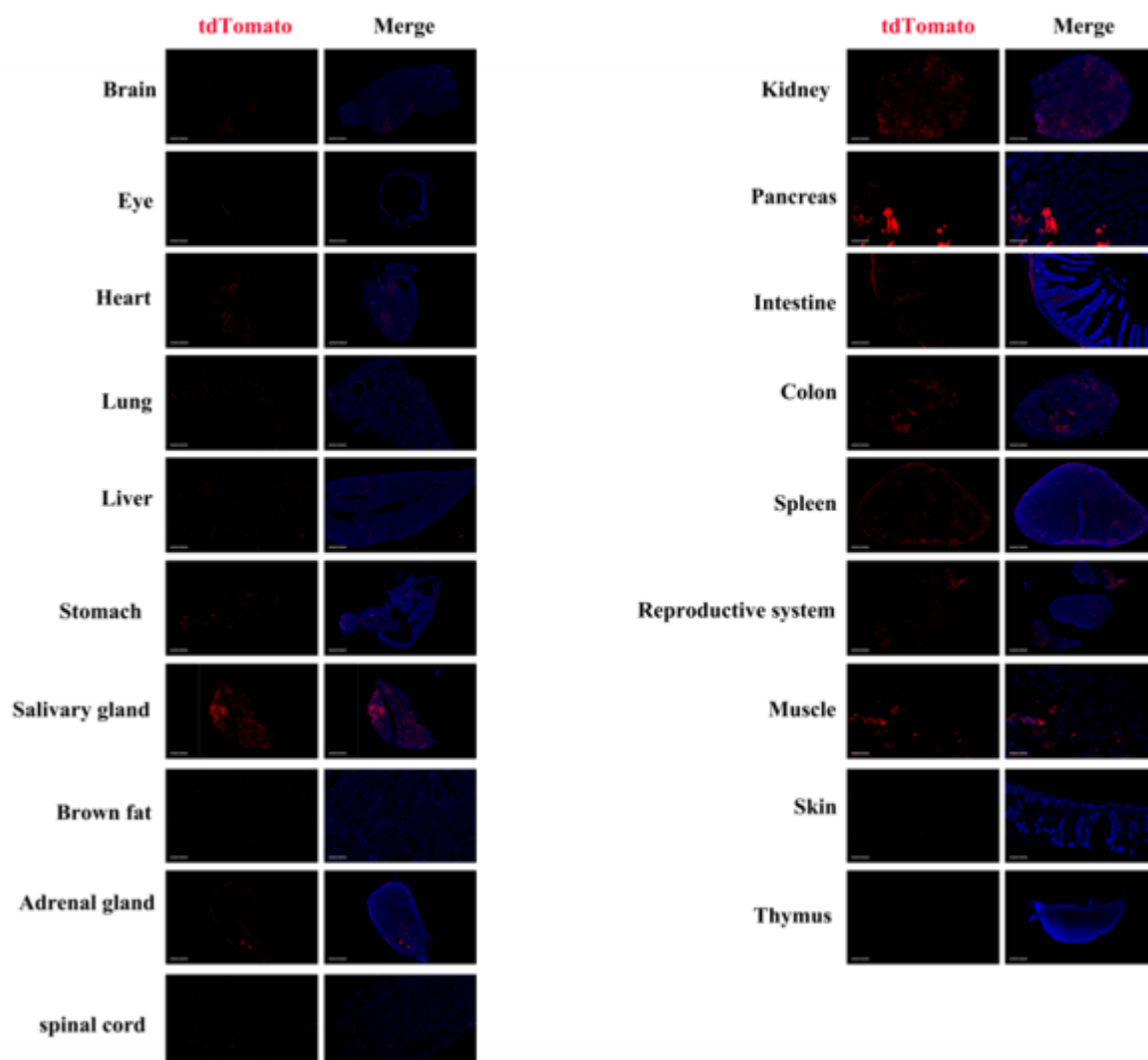


Fig 6. Detection of tdTomato (red) in various tissues of $Cyp19a1^{Cre/+}$; $Rosa26^{tdTomato/+}$ male mice. Expression tissues include: brain, cornea, heart, lungs, liver, stomach, salivary glands, adrenal glands, kidneys, pancreas, small intestine, colon, spleen, testis, thymus. A few cells expressed in brown fat, spinal cord, muscle, skin. (12-week old, male) (For more detailed information please contact our technical advisor.)