

Tg-2A-CreERT2

Nomenclature	C57BL/6Smoc-Tg ^{em1(2A-CreERT2-WPRE-polyA)Smoc}
Cat. NO.	NM-KI-215040
Strain State	Sperm cryopreservation

Gene Summary

Gene Symbol Col1a2	Synonyms	oim; Cola2; Cola-2; Col1a-2; AA960264; AI325291
	NCBI ID	12843
	MGI ID	88468
	Ensembl ID	ENSMUSG00000029661
	Human Ortholog	COL1A2

Model Description

2A-CreERT2-WPRE-polyA expression cassette was knocked into the Tg gene.

*Literature published using this strain should indicate: Tg-2A-CreERT2 mice (Cat. NO. NM-KI-215040) were purchased from Shanghai Model Organisms Center, Inc..

Validation Data

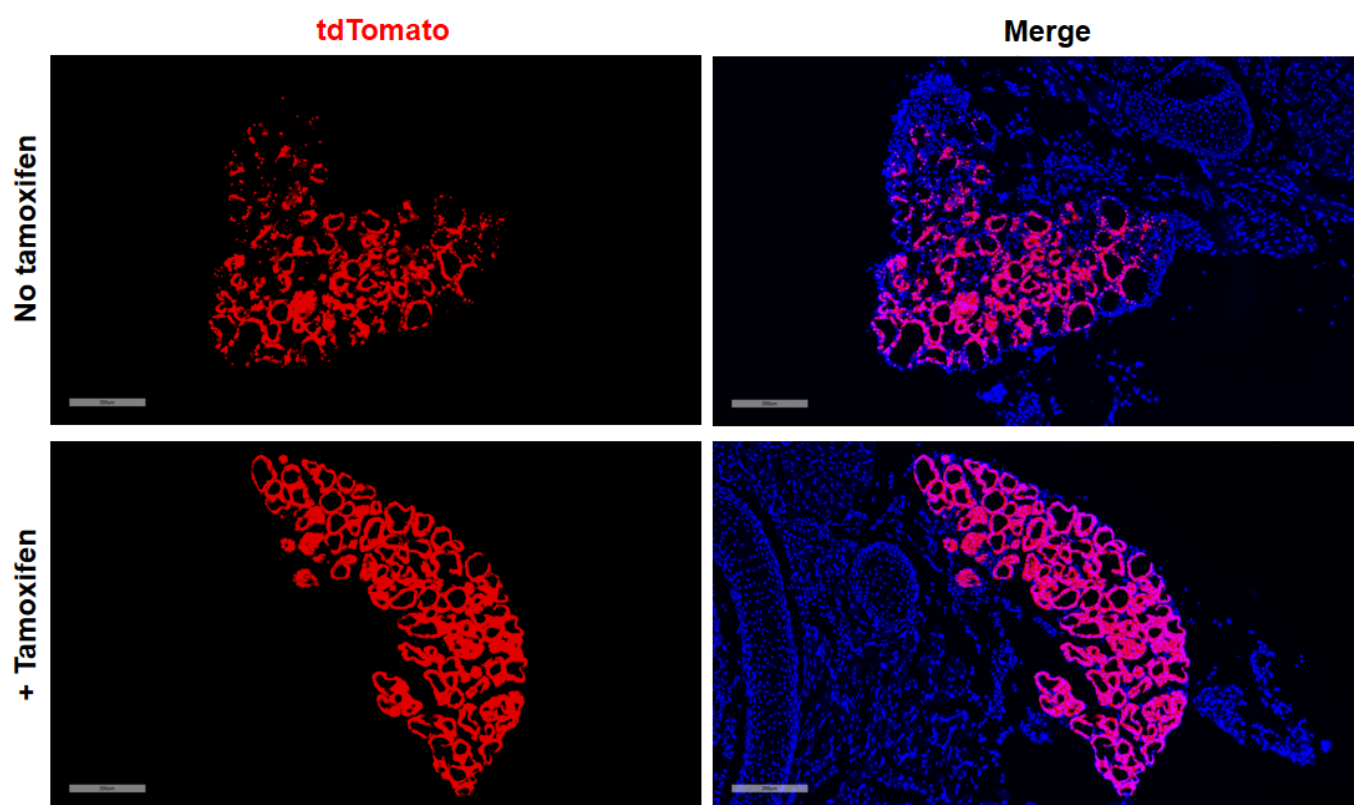


Fig1. Cre mediated recombination in thyroid of TgCreERT2/+;Rosa26tdTomato/+ mouse.

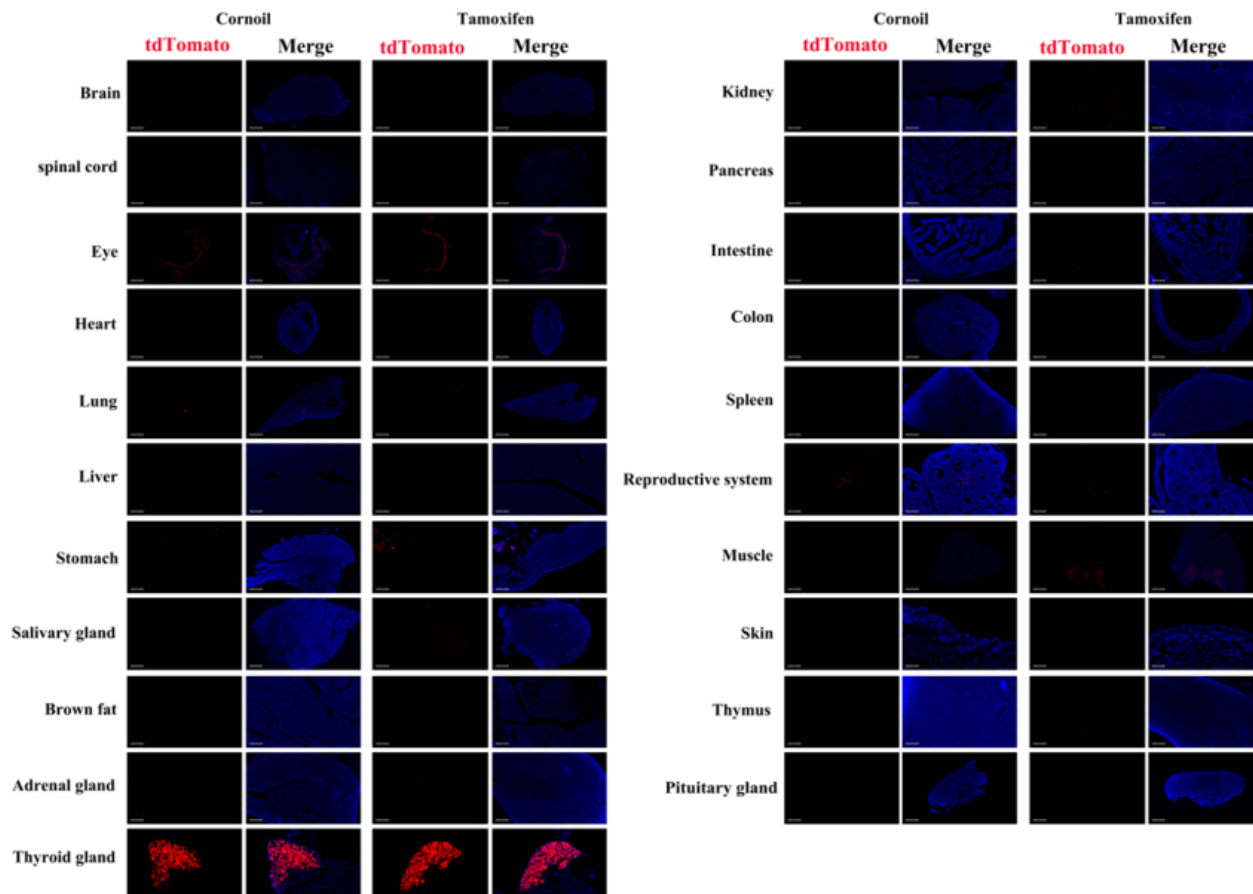


Fig2. Detection of tdTomato(red) in various tissues of

TgCreERT2/+;Rosa26tdTomato/+ mouse. Expression tissues include: thyroid gland and salivary gland. A few cells expressed in lung, liver, adrenal gland, kidney, colon, small intestine, spleen, ovary, thymus and pituitary gland. Tissues that unexpressed include brain, spinal cord, retina, heart, stomach, brown fat, pancreas, muscle, epidermis. Thyroid is expressed before induction. (4-weeks old, male) (For more detailed information please contact our technical advisor.)
