

# Avil-2A-CreERT2

<b>Nomenclature</b>	C57BL/6Smoc- <i>Avil</i> <sup>em1(2A-CreERT2)Smoc</sup>
<b>Cat. NO.</b>	NM-KI-215035
<b>Strain State</b>	Repository Live

## Gene Summary

<b>Gene Symbol</b>	<b>Synonyms</b>	DOC6, Advil
	<b>NCBI ID</b>	<a href="#">11567</a>
	<b>MGI ID</b>	<a href="#">1333798</a>
	<b>Ensembl ID</b>	<a href="#">ENSMUSG00000025432</a>

## Model Description

2A-CreERT2 expression cassette was knocked into the Avil gene.

\*Literature published using this strain should indicate: Avil-2A-CreERT2 mice (Cat. NO. NM-KI-215035) were purchased from Shanghai Model Organisms Center, Inc..

## Validation Data

### Avil-CreERT2/CAG-LSL-tdTomato

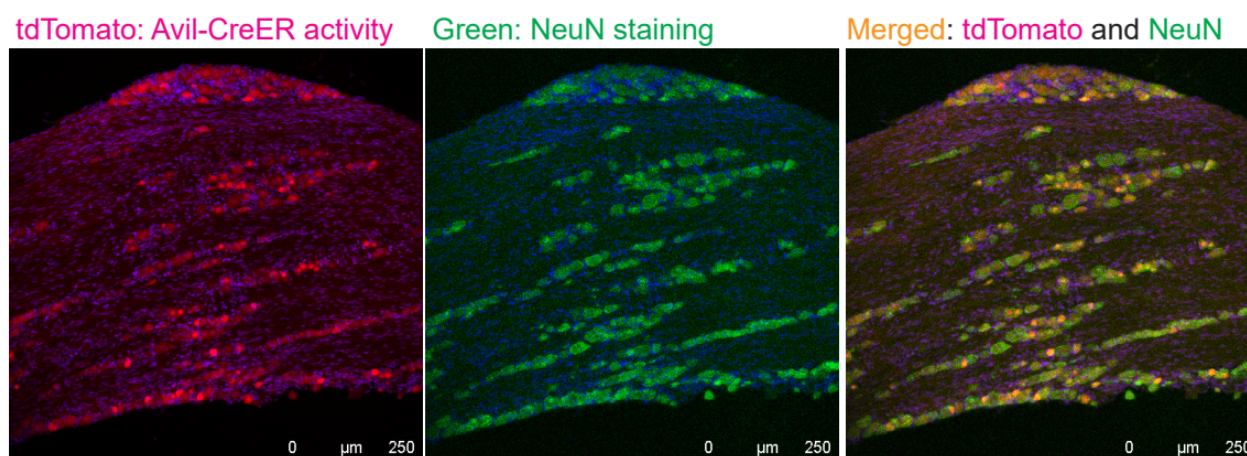


Fig1. Avil-CreERT2/CAG-LSL-tdTomato mice were injected intraperitoneally with tamoxifen at a

dose of 120 mg/kg, administered 3 times, every other day. Seven days after the last injection, the trigeminal ganglia of mice were harvested, the tdTomato signal was detected after tissue sectioning, and the NeuN signal was detected by immunofluorescence.

---