

# Slc34a1-CreERT2

<b>Nomenclature</b>	C57BL/6Smoc- <i>Slc34a1</i> <sup>em1(CreERT2-SV40pA)Smoc</sup>
<b>Cat. NO.</b>	NM-KI-210110
<b>Strain State</b>	Repository Live

## Gene Summary

<b>Gene Symbol</b> <b>Pvalb</b>	<b>Synonyms</b>	PV; Pva; Parv
	<b>NCBI ID</b>	<a href="#">19293</a>
	<b>MGI ID</b>	<a href="#">97821</a>
	<b>Ensembl ID</b>	<a href="#">ENSMUSG000000005716</a>
	<b>Human Ortholog</b>	PVALB

## Model Description

CreERT2-SV40pA expression cassette was knocked into the Slc34a1 gene .

\*Literature published using this strain should indicate: Slc34a1-CreERT2 mice (Cat. NO. NM-KI-210110) were purchased from Shanghai Model Organisms Center, Inc..

## Validation Data



Fig1. CreERT2-mediated recombination in kidney of  $Slc34a1^{CreERT2/+}$ ;  $Rosa26^{tdTomato/+}$  mouse.

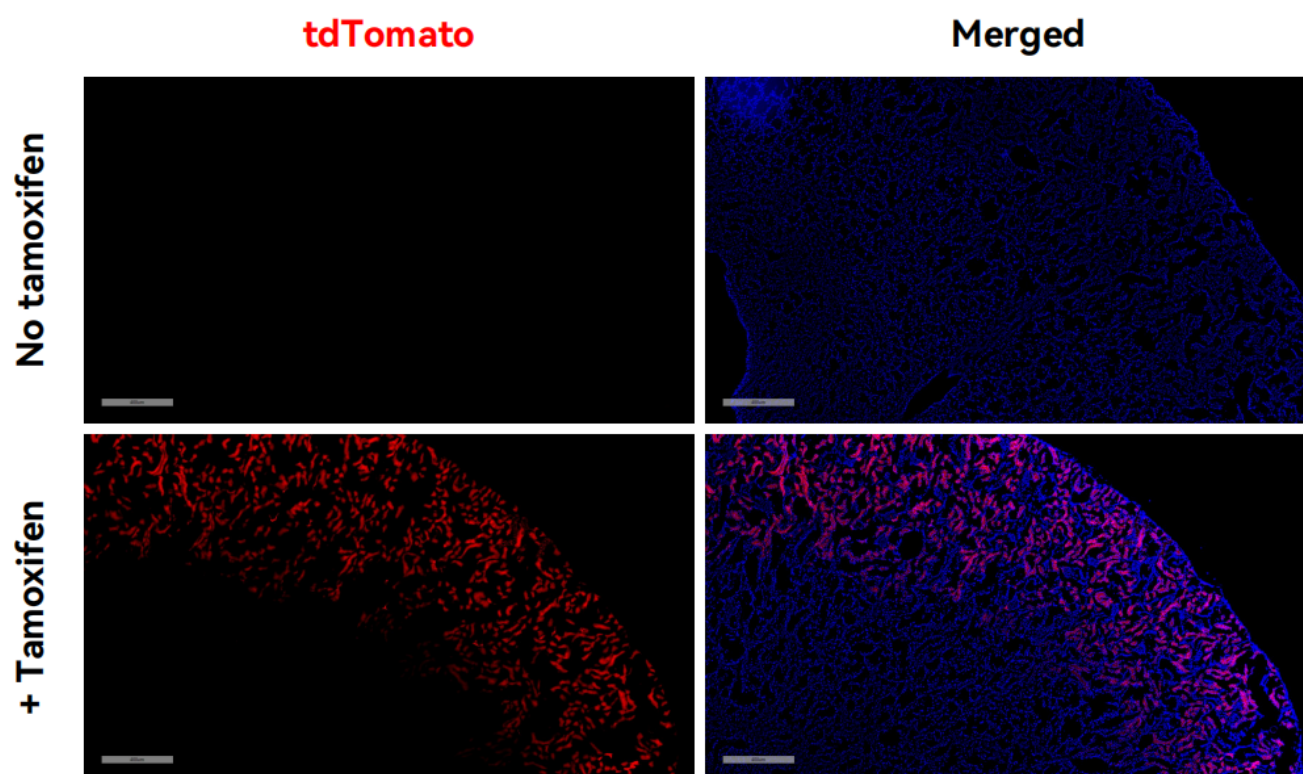


Fig2. CreERT2-mediated recombination in kidney of  $Slc34a1^{CreERT2/+}$ ;  $Rosa26^{tdTomato/+}$  mouse.

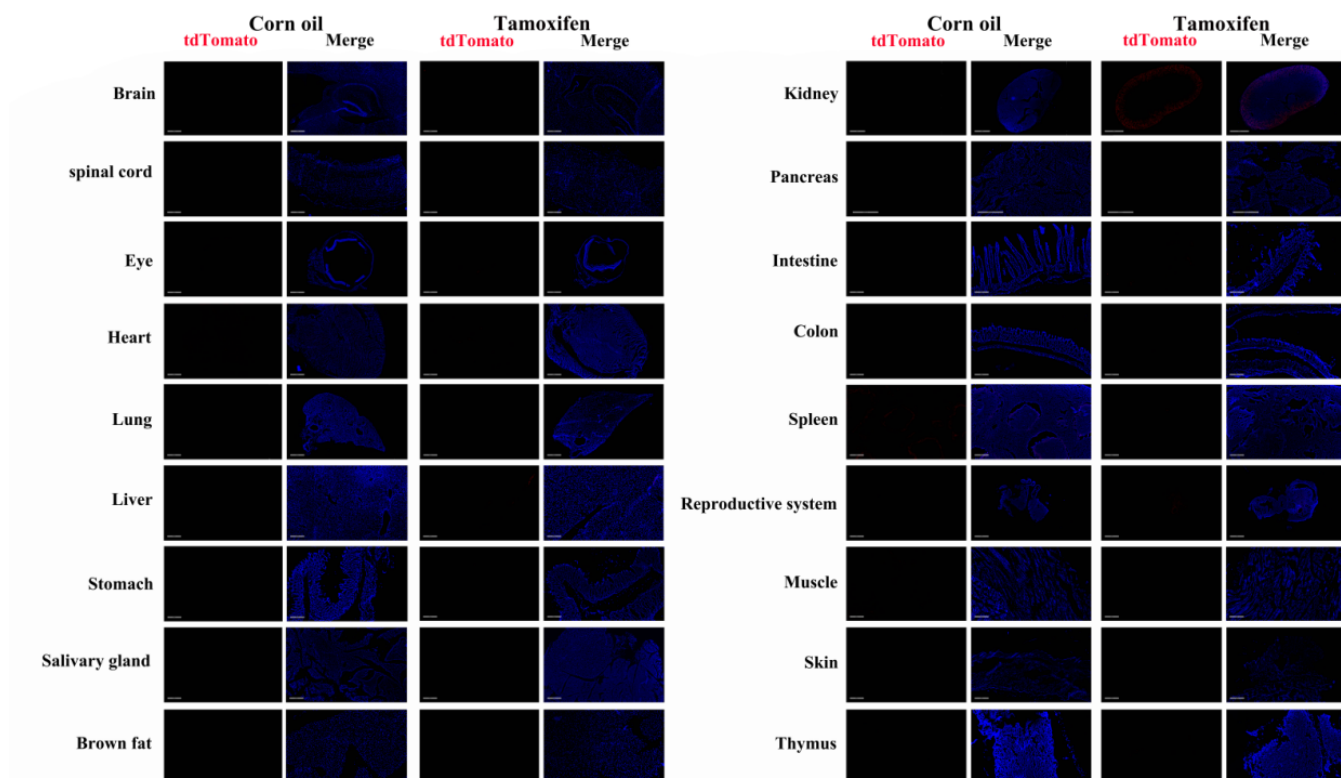


Fig3. Detection of tdTomato(red) in various tissues of  $Slc34a1^{CreERT2/+}; Rosa26^{tdTomato/+}$  mice. (For more detailed information please contact our technical advisor.)