

# B16F10-hPD-L1

## Strain Information

Cat. NO.	NM-S31A-TM01
Cell Line	B16F10- <i>Cd274</i> <sup>em1(hPDL1)/Smoc</sup>
Strain State	Validation of tumorigenic capacity completed
Model Description	The endogenous mouse Cd274(also known as PD-l1) gene was replaced by human PDL1 gene.
	*Literature published using this strain should indicate: B16F10-hPD-L1 cell line (Cat. NO. NM-S31A-TM01) was purchased from Shanghai Model Organisms Center, Inc..

## Validation Data

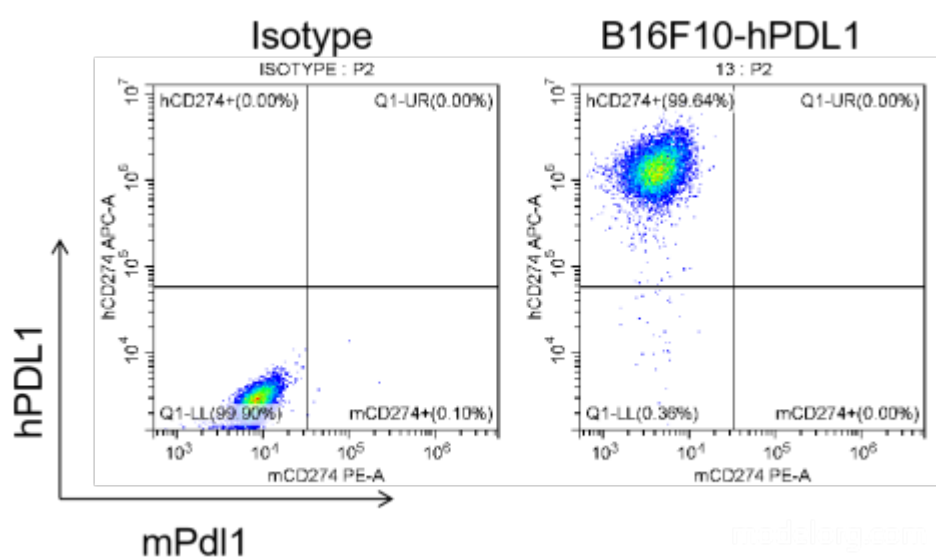


Figure 1. hPDL1 expression in B16F10-hPDL1 cell lines.

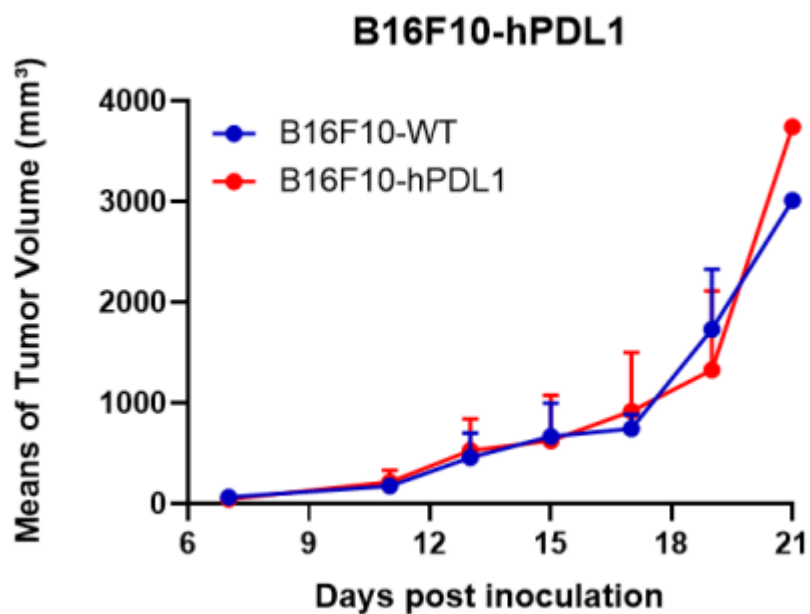


Figure 2. Tumor growth curve of B16F10-hPDL1 syngeneic model (n=5).

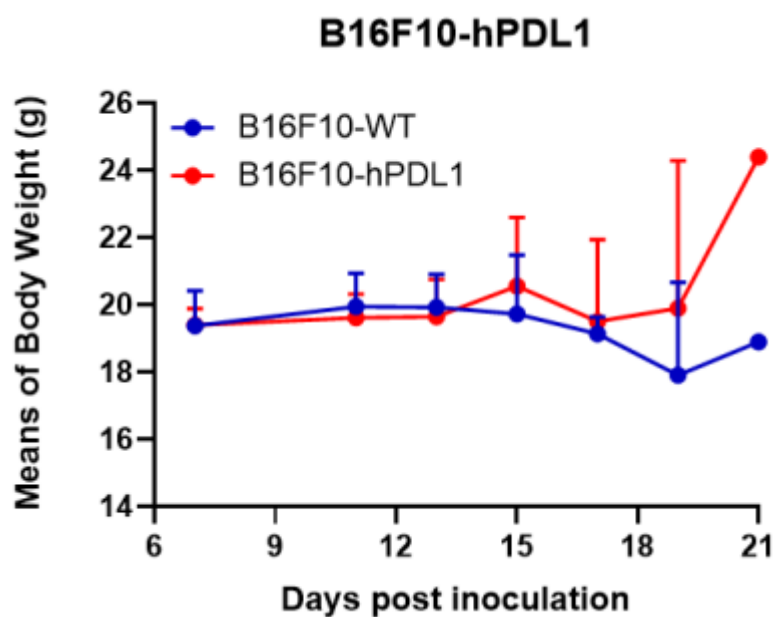


Figure 3. Body weight change of B16F10-hPDL1 syngeneic model (n=5).

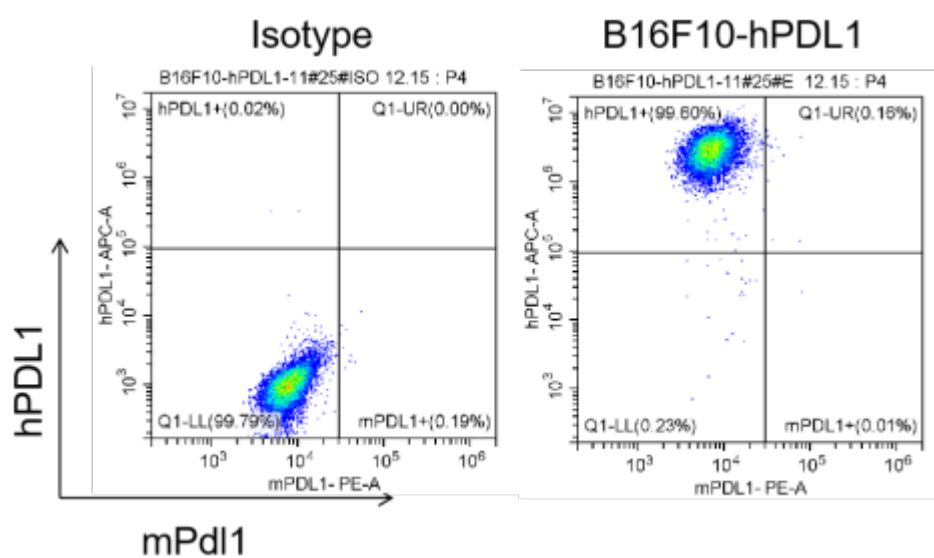


Figure 4. The expression of hPDL1 in humanized modified tumors by FACS