

# Ccr2-KO

|                     |   |
|---------------------|---|
| <b>Nomenclature</b> | C57BL/6Smoc- <i>Ccr2</i> <sup>em1Smoc</sup> |
| <b>Cat. NO.</b>     | NM-KO-190018                                |
| <b>Strain State</b> | Repository Live                             |

## Gene Summary

|                            |                       |  |
|----------------------------|-----------------------|--|
| <b>Gene Symbol</b><br>Ccr2 | <b>Synonyms</b>       | Ckr2; Ccr2a; Ccr2b; Ckr2a;<br>Ckr2b; mJe-r; Cmkbr2; Cc-ckr-2 |
|                            | <b>NCBI ID</b>        | <a href="#">12772</a>  |
|                            | <b>MGI ID</b>         | <a href="#">106185</a>                                       |
|                            | <b>Ensembl ID</b>     | <a href="#">ENSMUSG00000049103</a>                           |
|                            | <b>Human Ortholog</b> | CCR2   |

## Model Description

This Ccr2 knockout mouse model was generated by knocking out the exon 3 region of the Ccr2 .

**Research Application:** Immune-related

\*Literature published using this strain should indicate: Ccr2-KO mice (Cat. NO. NM-KO-190018) were purchased from Shanghai Model Organisms Center, Inc..

## Validation Data

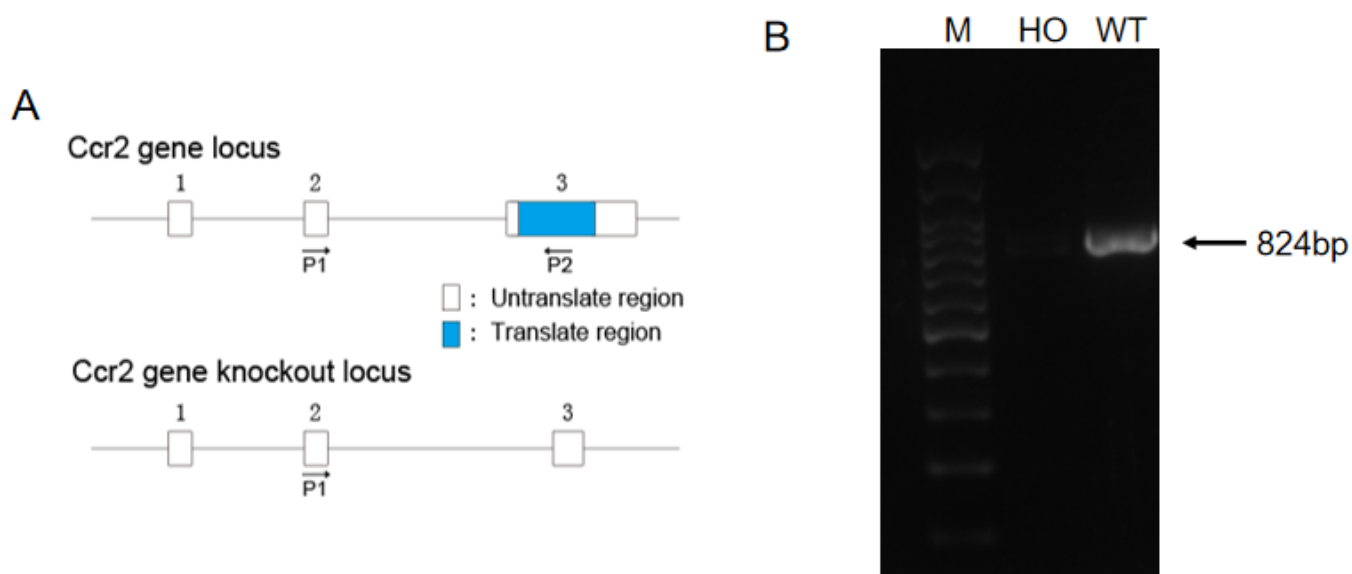


Fig1. Validation of *Ccr2* gene expression by RT-PCR.(A) Schematic diagram of primer design; (B) No product was obtained from *Ccr2* knockout homozygous mice, and the wild-type mice could obtain the 824bp target PCR product. (M, DNA marker; HO, homozygous; WT, wild type)

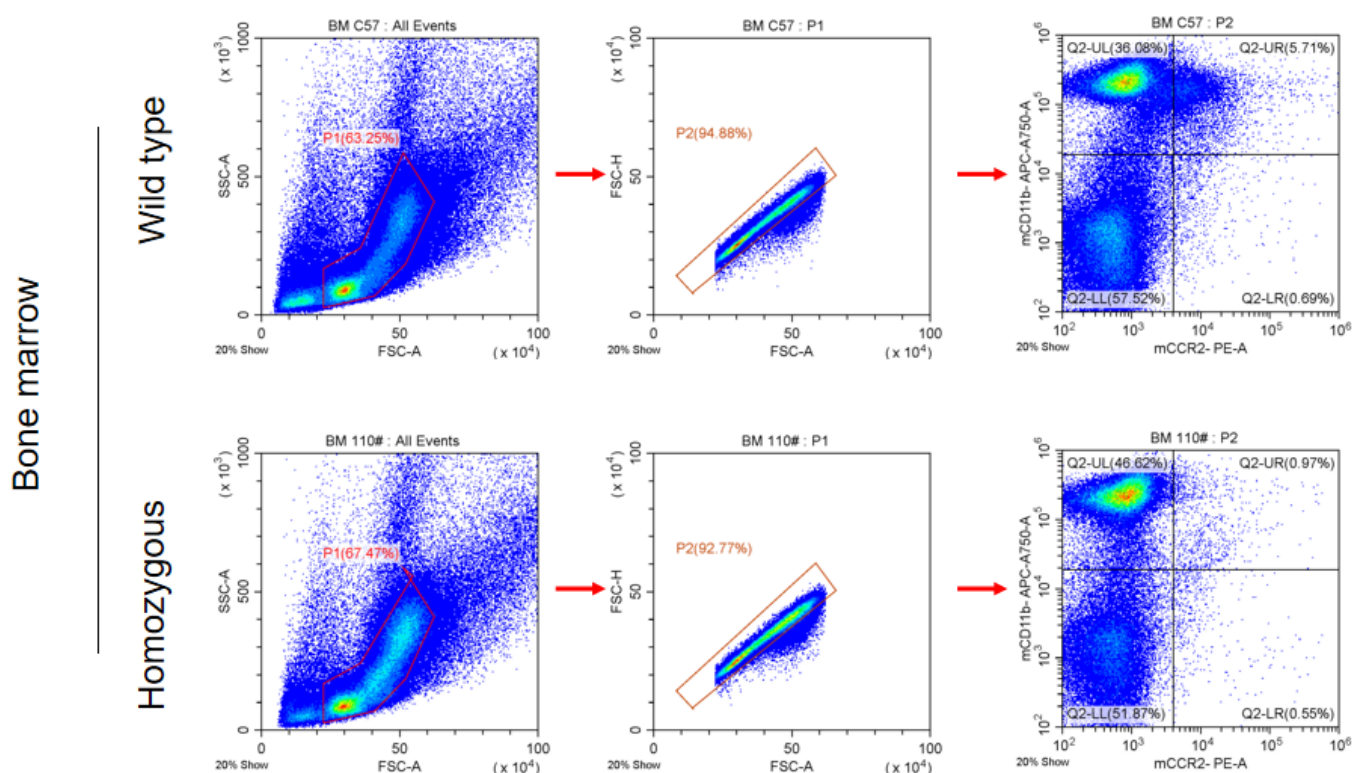


Fig2. Validation of CCR2 expression in the bone marrow by FACS. CCR2 expression could not be detected on CD11b<sup>+</sup> cells of the *Ccr2* knockout homozygous mice.

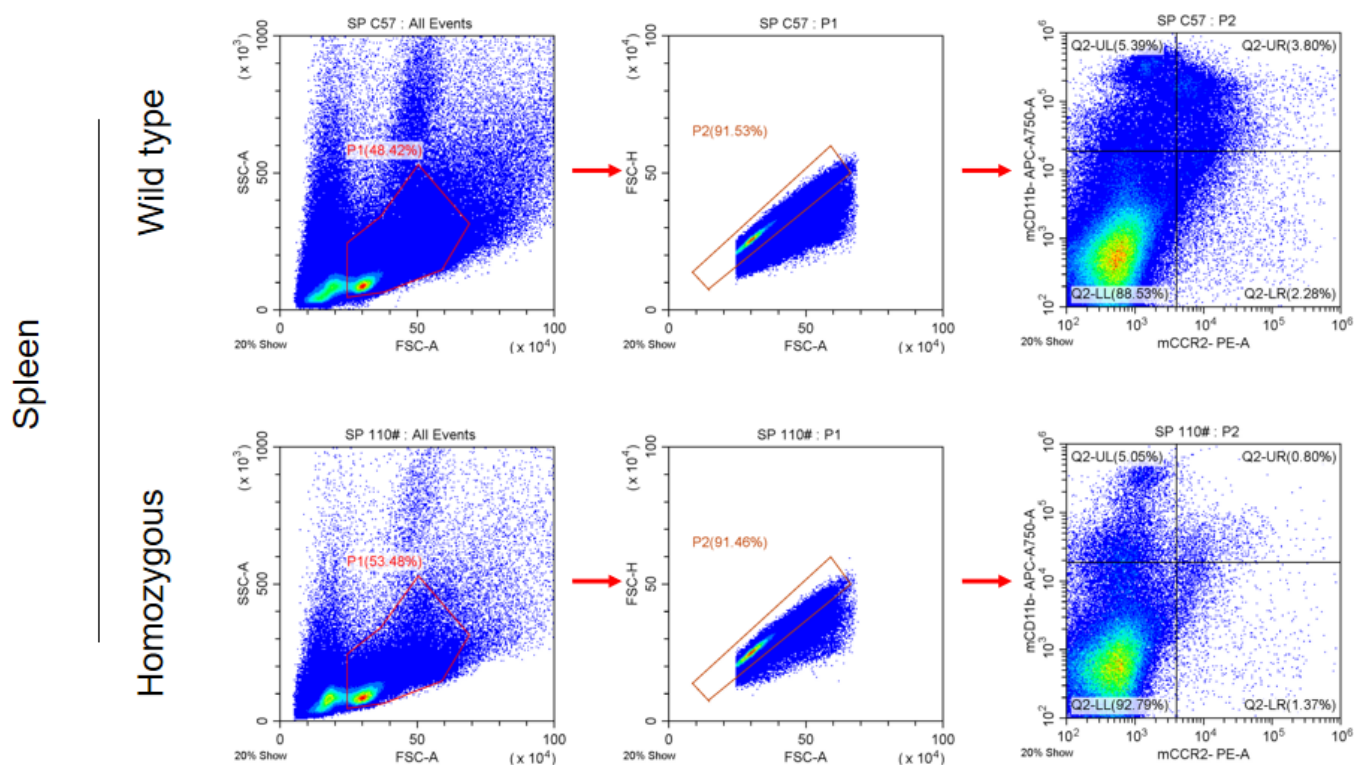


Fig3. Validation of CCR2 expression in the spleen by FACS. CCR2 expression could not be detected on CD11b+ cells of the *Ccr2* knockout homozygous mice.

## Publications

[The Effect of Lymphangiogenesis in Transplant Arteriosclerosis](#)

References: Circulation