

# Nervous System

The model of nerve injury induced by surgery or drugs can be used to study the mechanism of nerve injury and to evaluate drug efficacy.

- [Mouse model of low back pain](#)
- [Mouse model of Parkinson's disease](#)

**Principle** The sciatic nerve of mice is partially ligated to simulate low back pain observed in human.

**Sample requirements** Male C57 mice of 8 weeks old

**Testing instrument** Dynamic Plantar Aesthesiometer (Von Frey, Ugo Basile)

**Service cycle** 14 business days

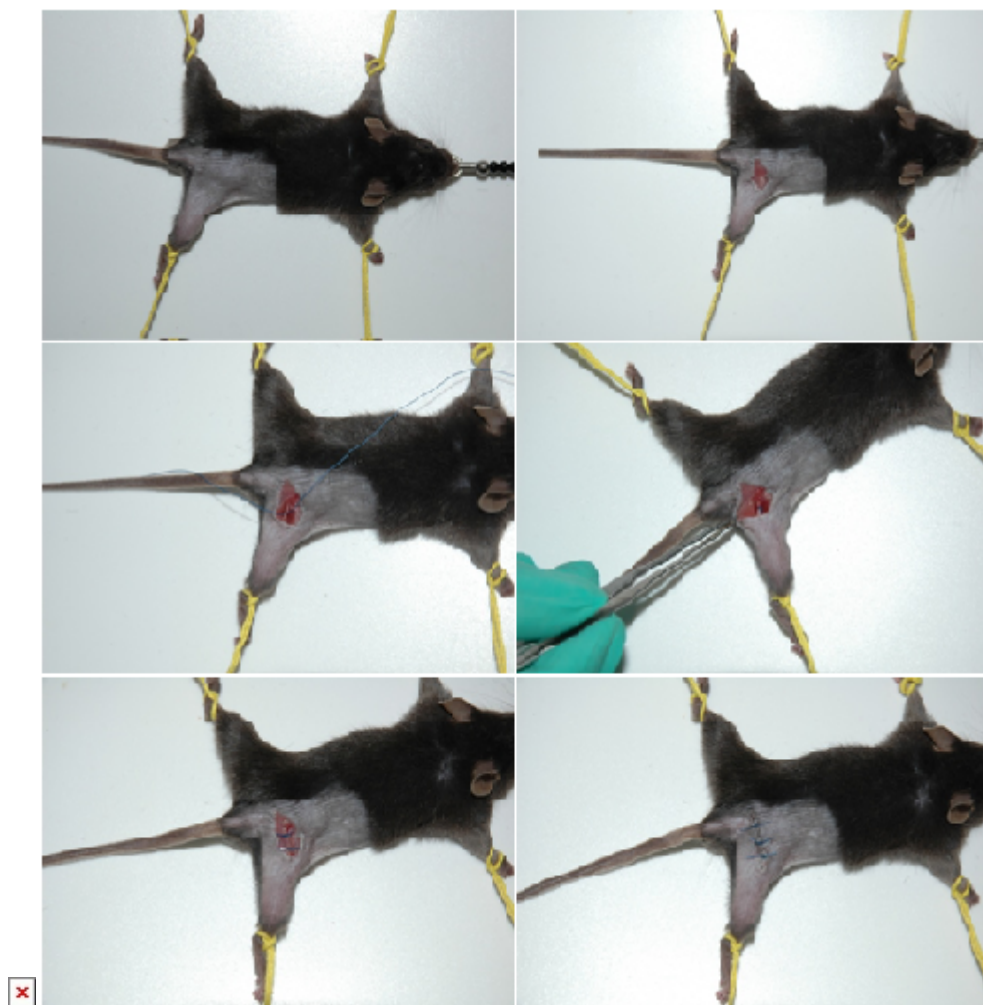


Figure 1 Modeling method

**Principle** The drug MPTP can disrupt the dopamine pathway between the mouse striatum and the substantia nigra to mimic human Parkinson's disease.

**Sample requirements** Male C57 mice of 10 weeks old

**Testing instruments and consumables** Rotating-beam fatigue-testing machine, climbing poles, MPTP (SIGMA)

**Service cycle** 14 business days

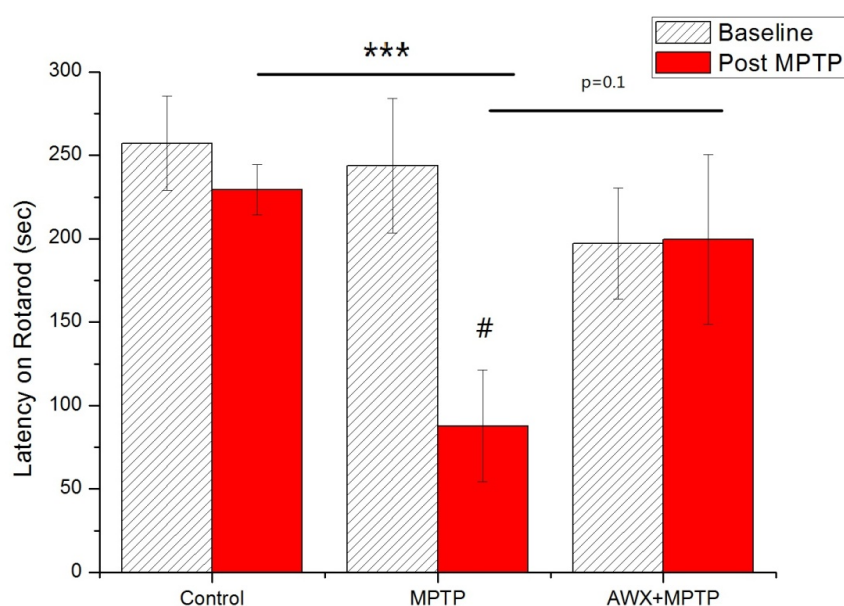


图1 MPTP Latency on Rotarod (sec)