

# CT26-hTROP2

## Strain Information

Cat. NO.	NM-S24A-TM38
Cell Line	CT26-hTROP2
Strain State	Validation of tumorigenic capacity completed
Model	TROP2 gene humanized CT26 cell line
Description	*Literature published using this strain should indicate: CT26-hTROP2 cell line (Cat. NO. NM-S24A-TM38) was purchased from Shanghai Model Organisms Center, Inc..

## Validation Data

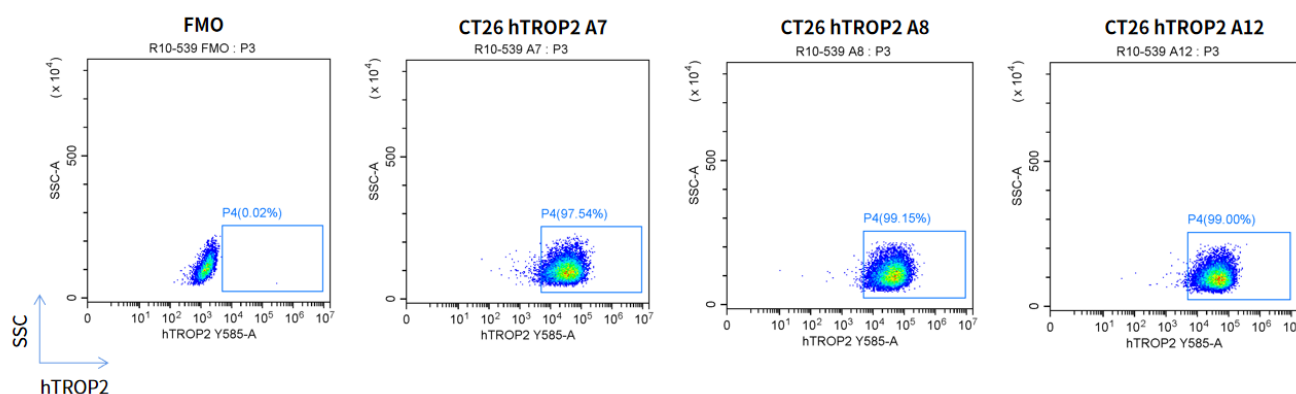


Fig1. hTROP2 expression on *in vitro* cultured cells of CT26-hTROP2.

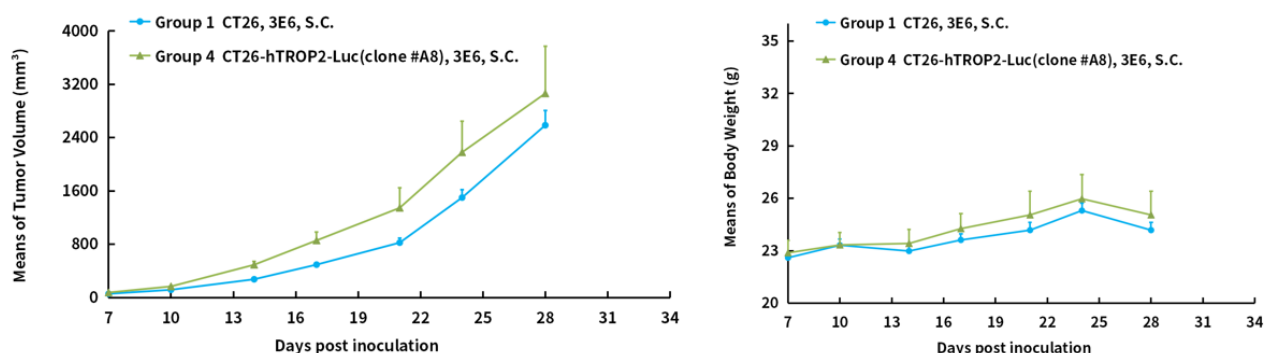


Fig2. *In vivo* validation of CT26-hTROP2 in BALB/c mice.

BALB/c mice were inoculated with CT26-hTROP2 subcutaneously at  $3 \times 10^6$  cells/mouse inoculum for tumor development.

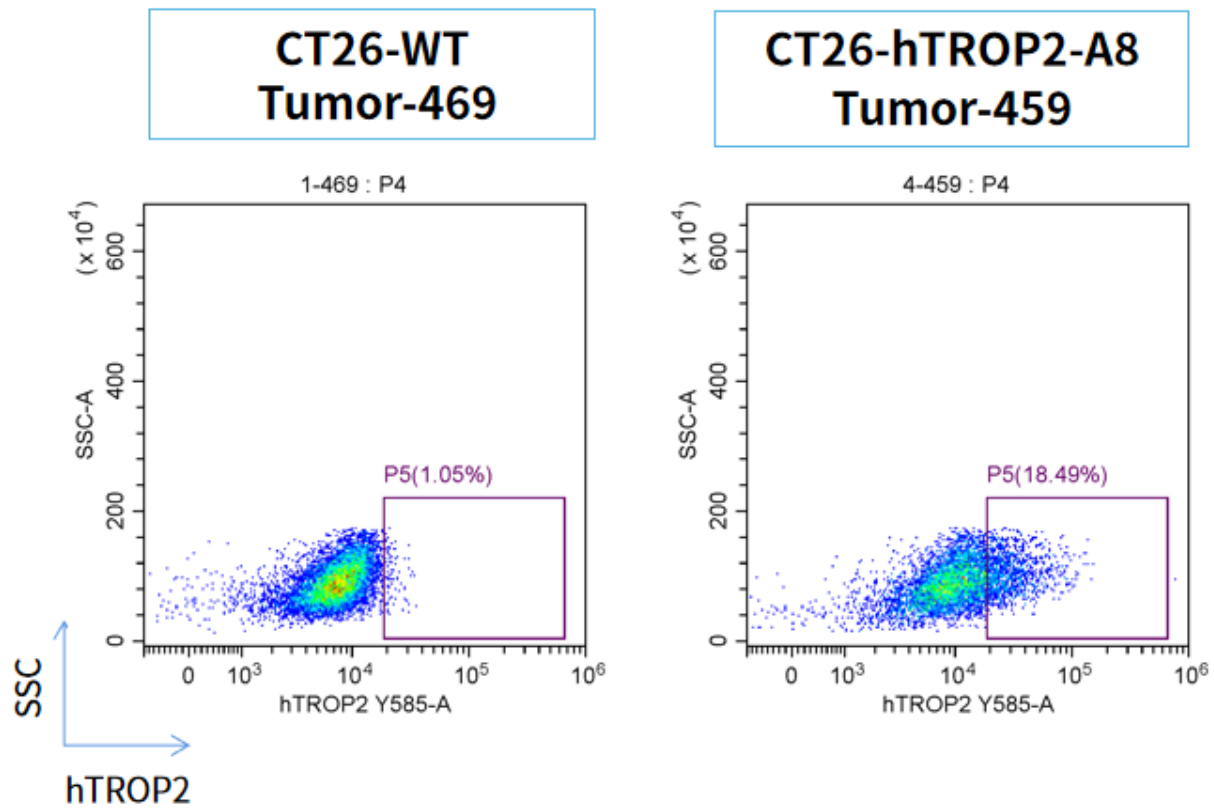


Fig3. hTROP2 expression in tumors after *in vivo* growth of CT26-hTROP2 in wild type BALB/c mice. The tumors were collected at day 15 post tumor cell inoculation.