

hINHBE

Nomenclature	C57BL/6Smoc- <i>Inhbe</i> ^{em1(hINHBE)Smoc}
Cat. NO.	NM-HU-233512
Strain State	Repository Live

Gene Summary

Gene Symbol Inhbe	Synonyms	-
	NCBI ID	16326
	MGI ID	109269
	Ensembl ID	ENSMUSG00000047492
	Human Ortholog	INHBE

Model Description

The endogenous mouse *Inhbe* gene was replaced by human INHBE gene.

*Literature published using this strain should indicate: hINHBE mice (Cat. NO. NM-HU-233512) were purchased from Shanghai Model Organisms Center, Inc..

Validation Data

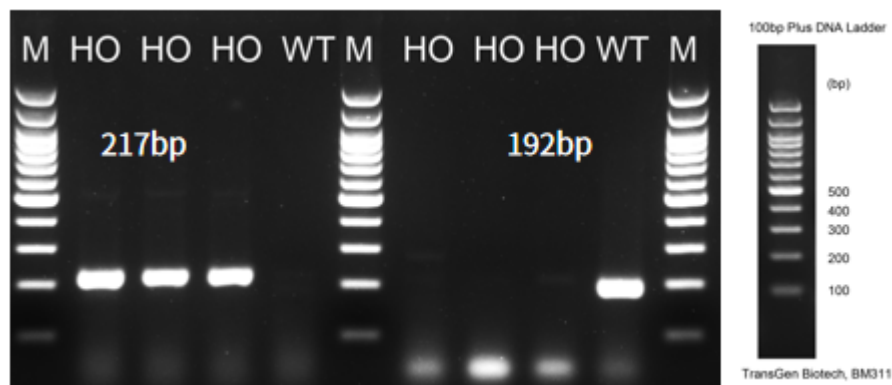


Fig.1 Detection of INHBE expression in liver by RT-PCR.

Wild type: only one band at 192 bp with primers F1/R1 (mInhbe);

Homozygous: only one band at 217 bp with primers F2/R2 (hINHBE).

Abbr. M, DNA marker; HO, homozygous; WT, wild type.

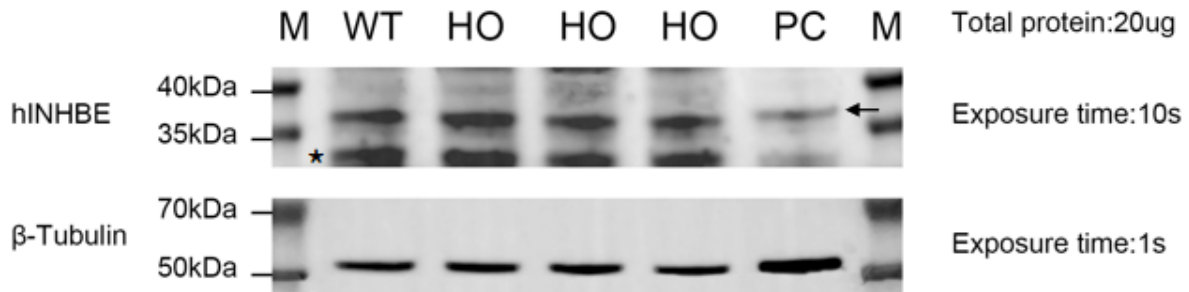


Fig.2 Detection of human INHBE expression in liver in hINHBE knockin mice by WB.

Abbr. M, marker; WT, wild type; HO, homozygous; PC, positive control, Hep G2 cells.

Note. The anti-human INHBE Antibody cross-reacted with mouse INHBE and humanized INHBE. Arrow indicates expected molecular weight and asterisk indicates a nonspecific band.

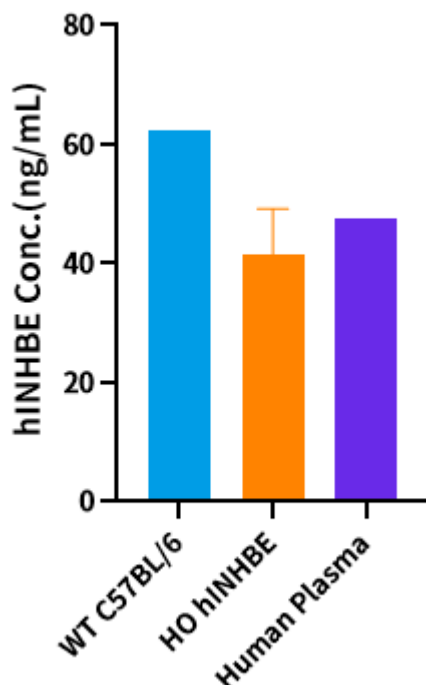


Fig.3 Detection of hINHBE expression in serum by ELISA (n=3).

Note. The human INHBE Elisa kit cross-reacted with mouse INHBE and humanized INHBE.

