

MC38-hLY6G6D

Strain Information

Cat. NO.	NMC-230054
Cell Line	MC38-hLY6G6D
Strain State	Validation of target gene expression completed
Model	LY6G6D gene humanized MC38 cell line
Description	*Literature published using this strain should indicate: MC38-hLY6G6D cell line (Cat. NO. NMC-230054) was purchased from Shanghai Model Organisms Center, Inc..

Validation Data

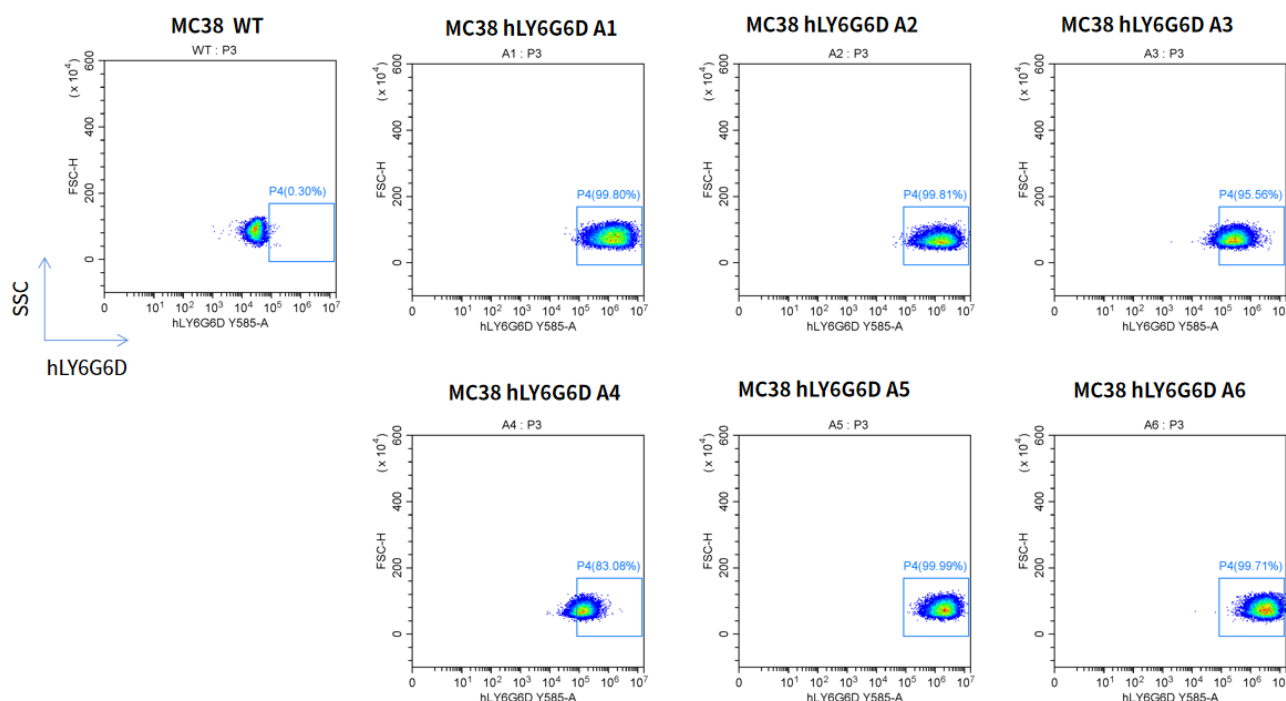


Fig1. hLY6G6D expression on *in vitro* cultured cells of MC38-hLY6G6D.