

# MC38-B2m KO

## Strain Information

|              |  |
|--------------|--|
| Cat. NO.     | NMC-230048   |
| Cell Line    | MC38- <i>B2m</i> <sup>em15moc</sup>  |
| Strain State | Validation of tumorigenic capacity completed   |
| Model        | B2m gene knockout MC38 cell line   |
| Description  | *Literature published using this strain should indicate: MC38-B2m KO cell line (Cat. NO. NMC-230048) was purchased from Shanghai Model Organisms Center, Inc.. |

## Validation Data

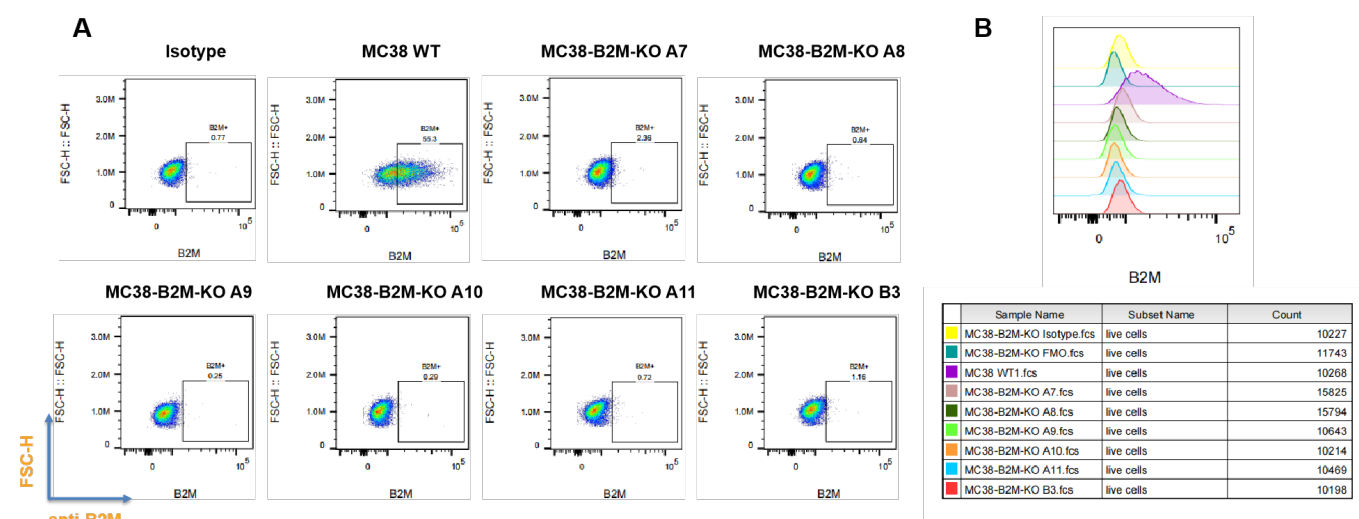


Fig 1. Detection of B2M expression on *in vitro* cultured cells of MC38-B2M-KO cell line by FACS.

Fig1. Detection of B2M expression on *in vitro* cultured cells of MC38-B2M-KO cell line by FACS.

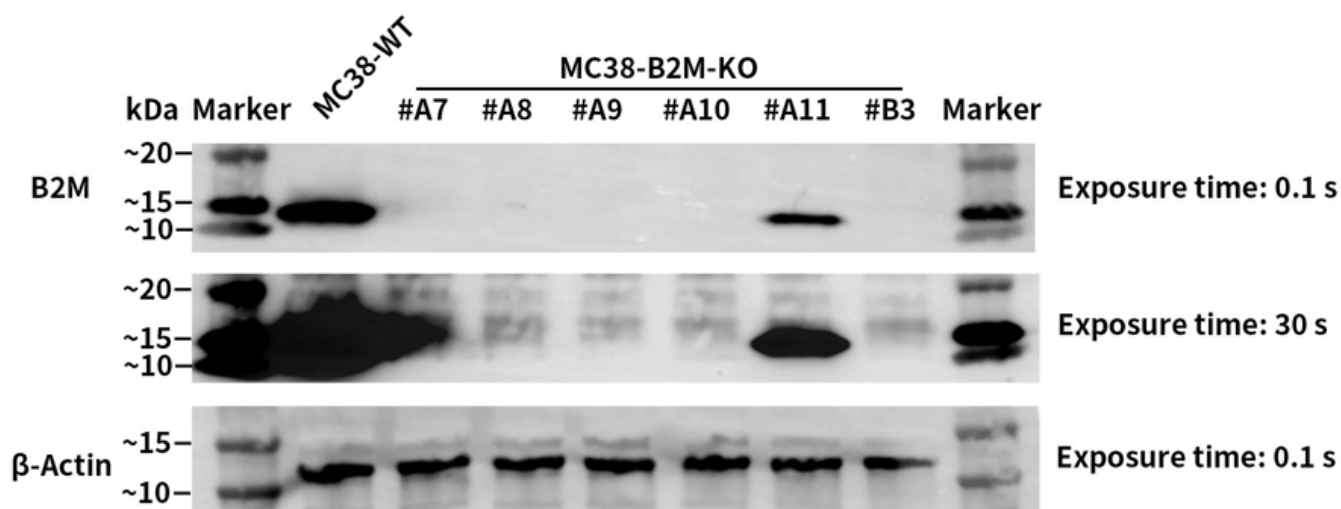


Fig2. Detection of B2M expression on *in vitro* cultured cells of MC38-B2M-KO cell line by WB.

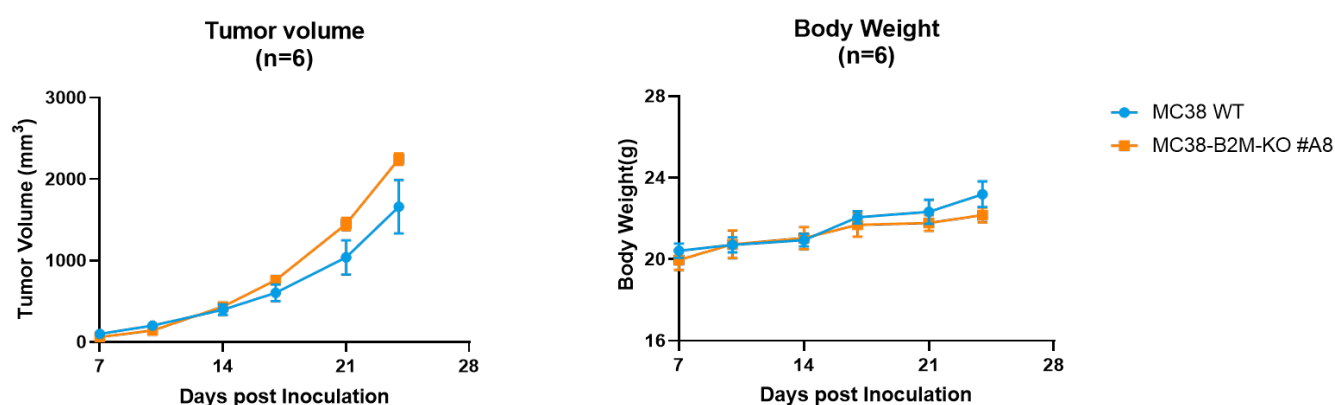


Fig3. *In vivo* validation of MC38-B2M-KO cells in C57BL/6 mice (n=6).

C57BL/6 mice were inoculated with MC38-B2M-KO subcutaneously at  $1 \times 10^6$  cells/mouse inoculum for tumor development.

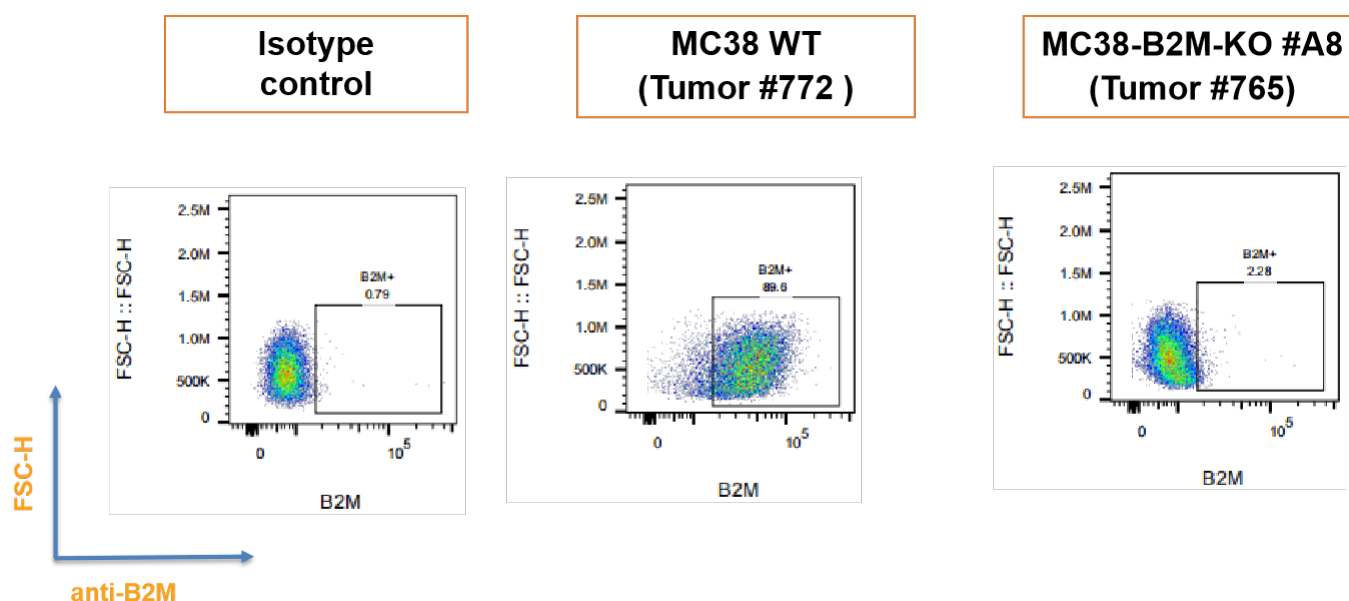


Fig4. B2M expression in tumors after *in vivo* growth of MC38-B2M-KO in wild type C57BL/6 mice  
The tumors were collected at day 18 post tumor cell inoculation.

---