

hLRG1

Nomenclature	C57BL/6Smoc- <i>Lrg1</i> ^{em(hLRG1)Smoc}
Cat. NO.	NM-HU-220510
Strain State	Embryo cryopreservation

Gene Summary

Gene Symbol Lrg1	Synonyms	Lrg; Lrhg; 1300008B03Rik; 2310031E04Rik
	NCBI ID	76905
	MGI ID	1924155
	Ensembl ID	ENSMUSG00000037095
	Human Ortholog	LRG1

Model Description

The endogenous mouse *Lrg1* gene was replaced by human LRG1 gene.

*Literature published using this strain should indicate: hLRG1 mice (Cat. NO. NM-HU-220510) were purchased from Shanghai Model Organisms Center, Inc..

Validation Data

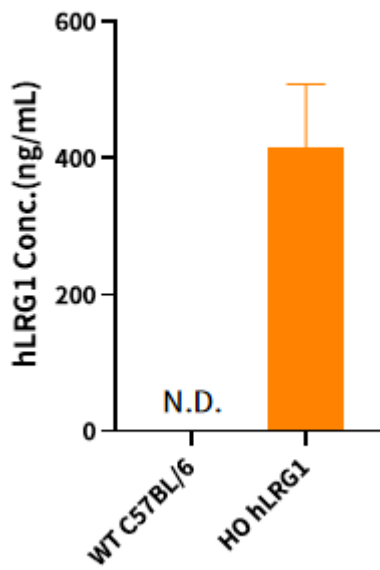


Fig.1 Detection of hLRG1 expression in serum by ELISA (n=3).

Abbr. HO, homozygous; WT, wild type.