

hL1CAM

Nomenclature	C57BL/6Smoc- <i>L1cam</i> ^{tm(hL1CAM)Smoc}
Cat. NO.	NM-HU-220414
Strain State	Repository Live

Gene Summary

Gene Symbol L1cam	Synonyms	L1, CD171, NCAM-L1, N-CAM-L1
	NCBI ID	16728
	MGI ID	96721
	Ensembl ID	ENSMUSG00000031391
	Human Ortholog	L1CAM

Model Description

The endogenous mouse L1cam gene was replaced by human L1CAM gene.

*Literature published using this strain should indicate: hL1CAM mice (Cat. NO. NM-HU-220414) were purchased from Shanghai Model Organisms Center, Inc..

Validation Data

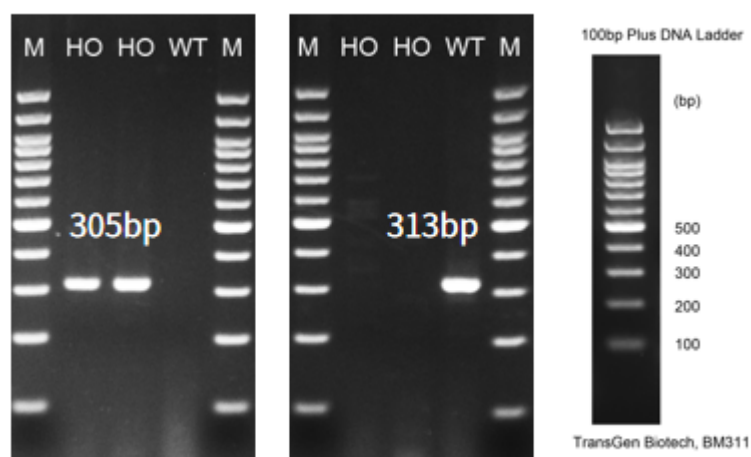


Fig.1 Detection of L1CAM expression in cerebellum by RT-PCR (male, 8wks).

Wild type: only one band at 313 bp with primers F1/R1 (mL1cam);

Homozygous: only one band at 305 bp with primers F2/R2 (hL1CAM).

Abbr. M, DNA marker; HO, homozygous; WT, wild type.
