

# 4T1-hHER2-Luc

## Strain Information

Cat. NO.	NM-S07-TM04
Cell Line	4T1-Tg(hHER2-Luc)Smoc
Strain State	Validation of tumorigenic capacity completed
Model	HER2 gene humanized 4T1 cell line
Description	*Literature published using this strain should indicate: 4T1-hHER2-Luc cell line (Cat. NO. NM-S07-TM04) was purchased from Shanghai Model Organisms Center, Inc..

## Validation Data

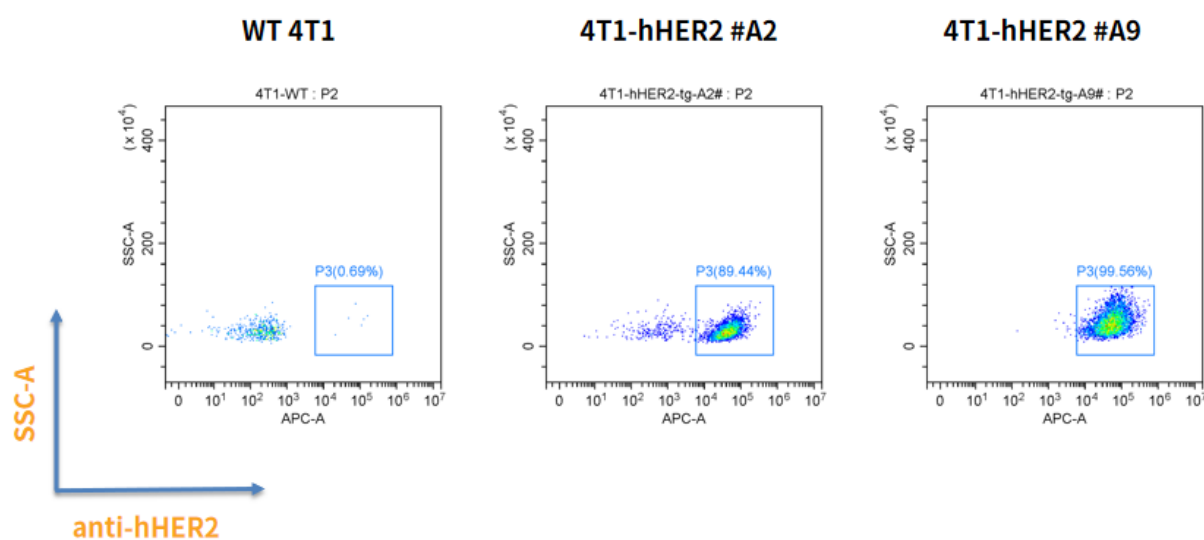


Fig1. HER2 expression in 4T1-hHER2 cell lines.

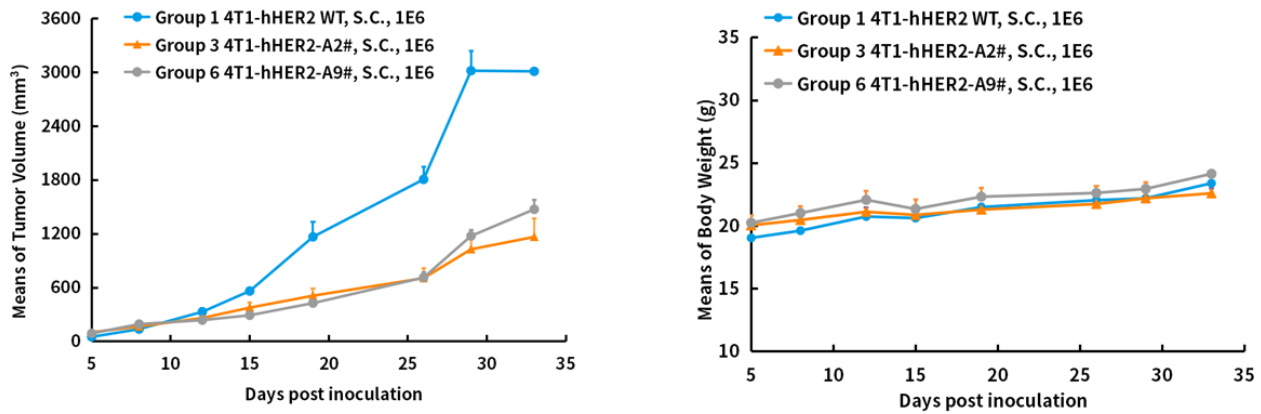


Fig2. *In vivo* validation of 4T1-hHER2 in BALB/c mice.

BALB/c mice were inoculated with 4T1-hHER2 subcutaneously at  $1 \times 10^6$  cells/mouse inoculum for tumor development.

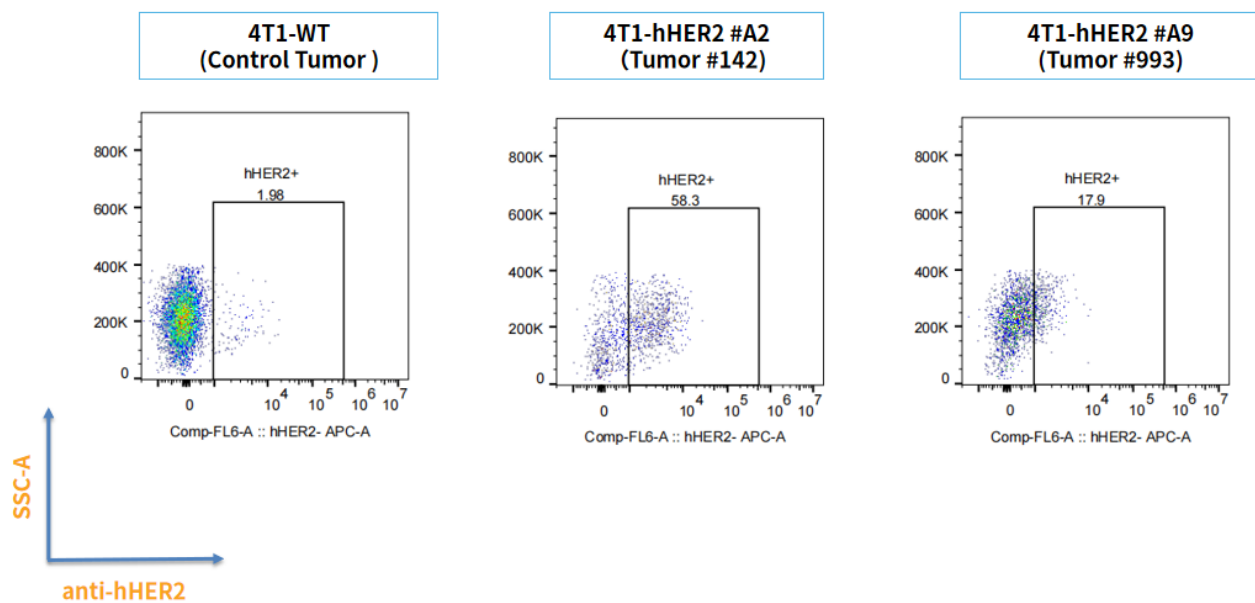


Fig3. HER2 expression in tumors after *in vivo* growth of 4T1-hHER2 in wild type BALB/c mice.

The tumors were collected at day 34 post tumor cell inoculation.